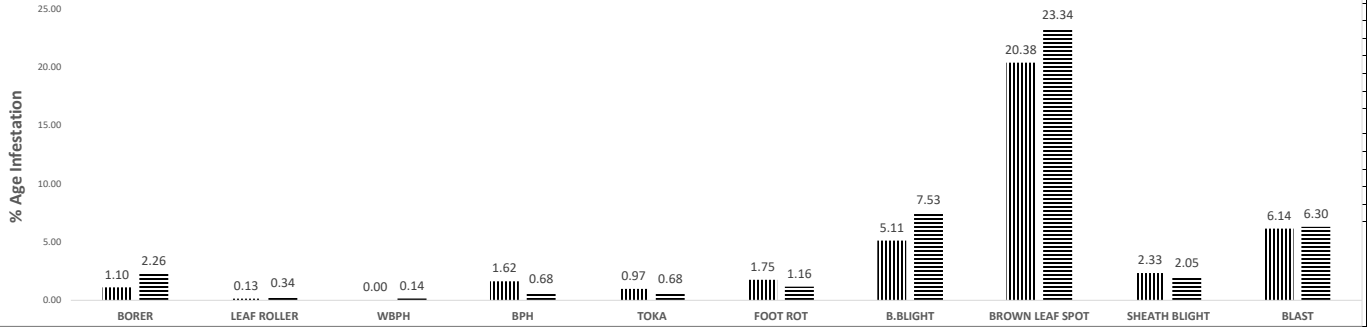


DIRECTORATE GENERAL PEST WARNING & QUALITY CONTROL OF PESTICIDES, PUNJAB, LAHORE.

PEST SCOUTING REPORT OF RICE CROP FOR 3RD WEEK OF OCTOBER, 2022

SUMMARY

PEST SITUATION OF RICE CROP 2022 VS 2021



DISTRICT WISE SUMMARY

DISTRICT	TEHSIL	No OF SPOTS VISITED	TOATAL AREA VISITED	HOT SPOTS					SPOTS BELOW ETL					DISEASE INCIDENCE				
				%AGE					%AGE					%AGE				
				BORER	LEAF ROLLER	WPBH	BPH	TOKA	BORER	LEAF ROLLER	WPBH	BPH	TOKA	F.R	B.L.B	B.L.S	Sheath Blight	Blast
GUJRANWALA	Gujranwala	17	120	0.00	0.00	0.00	0.00	0.00	5.88	0.00	0.00	5.88	29.41	0.00	17.65	17.65	0.00	0.00
	Kamoki	14	178	0.00	0.00	0.00	0.00	0.00	7.14	0.00	0.00	0.00	42.86	0.00	7.14	7.14	0.00	0.00
	Noshehra Virkan	15	336.5	0.00	0.00	0.00	0.00	0.00	26.67	0.00	0.00	0.00	33.33	0.00	26.67	13.33	0.00	0.00
	Wazirabad	17	103.5	0.00	0.00	0.00	0.00	0.00	0.00	0.00	0.00	0.00	23.53	0.00	5.88	11.76	0.00	0.00
HAFIZABAD	Hafizabad	57	647	0.00	0.00	0.00	0.00	0.00	7.02	0.00	3.51	7.02	17.54	0.00	7.02	22.81	5.26	3.51
	Pindi Bhatian	38	448	0.00	0.00	0.00	0.00	0.00	7.89	0.00	2.63	7.89	21.05	0.00	7.89	28.95	5.26	0.00
SIALKOT	Sialkot	26	311	0.00	0.00	0.00	0.00	0.00	7.69	0.00	0.00	3.85	11.54	0.00	26.92	7.69	0.00	7.69
	Sambrial	32	357	0.00	0.00	0.00	0.00	0.00	6.25	0.00	0.00	6.25	18.75	0.00	15.63	12.50	9.38	15.63
	Daska	30	197	0.00	0.00	0.00	0.00	0.00	6.67	0.00	0.00	3.33	23.33	0.00	36.67	6.67	0.00	6.67
	Pasrur	30	483	0.00	0.00	0.00	0.00	0.00	10.00	0.00	0.00	10.00	26.67	0.00	13.33	10.00	6.67	13.33
NAROWAL	Narowal	19	231	0.00	0.00	0.00	0.00	0.00	0.00	0.00	0.00	73.68	15.79	0.00	10.53	63.16	0.00	0.00
	Zafarwal	40	228	0.00	0.00	0.00	0.00	0.00	0.00	0.00	0.00	0.00	32.50	0.00	15.00	17.50	0.00	10.00
	Baddomalhi	26	261	0.00	0.00	0.00	0.00	0.00	0.00	0.00	0.00	76.92	7.69	0.00	0.00	61.54	0.00	0.00
	Shakar Garh	14	86	0.00	0.00	0.00	14.29	0.00	0.00	0.00	7.14	21.43	14.29	0.00	0.00	21.43	0.00	0.00
GUJRAT	Gujrat	21	213	0.00	0.00	0.00	0.00	14.29	0.00	0.00	0.00	19.05	47.62	0.00	9.52	47.62	0.00	0.00
	Kharian	11	227	0.00	0.00	0.00	0.00	0.00	0.00	0.00	0.00	18.18	54.55	0.00	18.18	9.09	0.00	0.00
	Jalal Pur Jattan	6	49.5	0.00	0.00	0.00	0.00	0.00	0.00	0.00	0.00	0.00	50.00	0.00	16.67	33.33	0.00	0.00
M.B.DIN	Phalia	12	64	0.00	0.00	0.00	0.00	8.33	8.33	0.00	0.00	25.00	8.33	0.00	8.33	33.33	0.00	16.67
	M.B.Din	20	127	0.00	0.00	0.00	0.00	10.00	10.00	0.00	5.00	15.00	15.00	0.00	5.00	50.00	10.00	15.00
	Malikwal	13	49	0.00	0.00	0.00	7.69	0.00	0.00	0.00	0.00	15.38	15.38	0.00	15.38	53.85	7.69	7.69
LAHORE	Lahore	59	409	0.00	0.00	0.00	11.86	8.47	16.95	0.00	0.00	64.41	57.63	0.00	1.69	38.98	1.69	0.00
SHEIKHUPURA	Sheikhupura	35	233	0.00	0.00	0.00	2.86	5.71	8.57	0.00	8.57	22.86	22.86	0.00	2.86	22.86	2.86	0.00
	Safdarabad	51	248	0.00	0.00	0.00	0.00	0.00	17.65	0.00	7.84	13.73	23.53	0.00	9.80	25.49	0.00	0.00
	Sharqpur	15	135	0.00	0.00	0.00	26.67	0.00	33.33	0.00	86.67	60.00	40.00	0.00	0.00	46.67	0.00	0.00
	Ferozwala	37	221	2.70	0.00	0.00	10.81	2.70	0.00	0.00	0.00	8.11	32.43	0.00	8.11	24.32	10.81	0.00
	Muridke	38	295	0.00	0.00	0.00	0.00	2.63	13.16	0.00	10.53	10.53	15.79	0.00	0.00	21.05	2.63	0.00
NANKANA SAHIB.	Nankana Sahib	34	152.5	0.00	0.00	0.00	0.00	0.00	8.82	5.88	11.76	8.82	5.88	0.00	5.88	14.71	0.00	8.82
	Sangla Hill	15	42	0.00	0.00	0.00	0.00	0.00	13.33	6.67	13.33	6.67	6.67	0.00	0.00	13.33	0.00	6.67
	Shahkot	14	139.5	0.00	0.00	0.00	0.00	0.00	7.14	7.14	14.29	7.14	14.29	0.00	7.14	14.29	0.00	14.29
KASUR	Kasur	26	62	0.00	0.00	0.00	0.00	0.00	11.54	11.54	0.00	7.69	7.69	0.00	0.00	7.69	0.00	3.85
	Chunian	35	94	0.00	0.00	0.00	0.00	0.00	5.71	0.00	0.00	8.57	2.86	0.00	0.00	8.57	2.86	2.86
	Kot Radha Kishan	8	12	0.00	0.00	0.00	0.00	0.00	12.50	12.50	0.00	12.50	25.00	0.00	0.00	12.50	0.00	0.00
	Pattoki	34	124	0.00	0.00	0.00	0.00	0.00	5.88	0.00	0.00	8.82	8.82	0.00	5.88	14.71	0.00	14.71
FAISALABAD	Jaranwala	32	133.5	0.00	0.00	0.00	0.00	0.00	0.00	0.00	0.00	3.13	37.50	0.00	0.00	12.50	0.00	0.00
	Chak Jhumra	41	176.5	0.00	0.00	0.00	0.00	0.00	0.00	0.00	0.00	7.32	24.39	0.00	0.00	17.07	0.00	2.44
CHINIOT	Chiniot	24	115	0.00	0.00	0.00	0.00	0.00	4.17	0.00	0.00	8.33	33.33	0.00	0.00	33.33	0.00	0.00
	Bhowana	19	144	0.00	0.00	0.00	0.00	0.00	5.26	0.00	0.00	0.00	42.11	0.00	0.00	36.84	0.00	0.00
	Lalian	26	131	0.00	0.00	0.00	0.00	0.00	11.54	0.00	0.00	3.85	26.92	0.00	0.00	15.38	0.00	0.00
JHANG	Shorkot	20	110	0.00	0.00	0.00	0.00	0.00	15.00	0.00	0.00	0.00	25.00	0.00	0.00	15.00	0.00	10.00
	Jhang	15	94	0.00	0.00	0.00	0.00	0.00	0.00	0.00	0.00	20.00	46.67	0.00	0.00	20.00	0.00	6.67

DISTRICT WISE SUMMARY																		
DISTRICT	TEHSIL	No OF SPOTS VISITED	TOATAL AREA VISITED	HOT SPOTS					SPOTS BELOW ETL					DISEASE INCIDENCE				
				%AGE					%AGE					%AGE				
				BORER	LEAF ROLLER	WPBH	BPH	TOKA	BORER	LEAF ROLLER	WPBH	BPH	TOKA	F.R	B.L.B	B.L.S	Sheath Blight	Blast
T.T. SINGH	Kamalia	40	180	0.00	0.00	0.00	0.00	0.00	2.50	0.00	0.00	2.50	7.50	0.00	0.00	2.50	0.00	5.00
	Pir mahal	19	158	0.00	0.00	0.00	0.00	0.00	15.79	0.00	0.00	0.00	0.00	0.00	0.00	15.79	0.00	5.26
	A.P.Sial	20	71	0.00	0.00	0.00	0.00	0.00	30.00	0.00	0.00	0.00	15.00	0.00	0.00	10.00	0.00	25.00
OKARA	Depalpur	25	135	0.00	0.00	0.00	0.00	0.00	20.00	12.00	12.00	0.00	16.00	0.00	0.00	0.00	8.00	16.00
PAKPATTAN	Pakpattan	21	45	0.00	0.00	0.00	0.00	0.00	28.57	0.00	14.29	0.00	9.52	14.29	4.76	9.52	0.00	9.52
BAHAWALPUR	Bahawalpur	10	102	10.00	0.00	0.00	10.00	0.00	80.00	40.00	0.00	30.00	80.00	0.00	0.00	30.00	0.00	0.00
	Hasilpur	7	75	14.29	0.00	0.00	0.00	0.00	42.86	0.00	0.00	42.86	0.00	0.00	0.00	28.57	0.00	0.00
	Ahmadpur	6	42	0.00	0.00	0.00	0.00	0.00	100.00	83.33	0.00	33.33	50.00	0.00	0.00	16.67	0.00	0.00
	Yazman	5	26	0.00	0.00	0.00	0.00	0.00	40.00	80.00	0.00	40.00	0.00	0.00	0.00	20.00	0.00	0.00
BAHAWALNAGAR	Minchinabad	28	209	3.57	0.00	0.00	10.71	0.00	42.86	0.00	0.00	46.43	10.71	0.00	0.00	25.00	0.00	7.14
	Chishtian	6	36	0.00	0.00	0.00	16.67	0.00	50.00	0.00	0.00	33.33	0.00	0.00	0.00	16.67	0.00	16.67
	Bahawalnagar	6	39	0.00	0.00	0.00	16.67	0.00	50.00	0.00	0.00	16.67	0.00	0.00	0.00	16.67	0.00	16.67
SAHIWAL	Sahiwal	12	39	0.00	0.00	0.00	0.00	0.00	25.00	0.00	16.67	0.00	16.67	0.00	8.33	16.67	0.00	0.00
R.Y.Khan	R.Y.Khan	6	7	0.00	0.00	0.00	0.00	0.00	66.67	50.00	0.00	50.00	66.67	0.00	0.00	50.00	0.00	0.00
	Sadiqabad	2	11	0.00	0.00	0.00	0.00	0.00	100.00	50.00	0.00	0.00	50.00	0.00	0.00	100.00	0.00	0.00
	Liaqutpur	3	5	0.00	0.00	0.00	0.00	0.00	66.67	33.33	0.00	0.00	33.33	0.00	0.00	0.00	0.00	0.00
	Khan pur	2	12	0.00	0.00	0.00	0.00	0.00	100.00	100.00	0.00	0.00	100.00	0.00	0.00	0.00	0.00	0.00
SARGODHA	Sargodha	10	39	0.00	0.00	0.00	0.00	0.00	0.00	30.00	0.00	0.00	50.00	0.00	0.00	0.00	10.00	0.00
	Silanwali	14	57	0.00	0.00	0.00	0.00	0.00	14.29	35.71	0.00	7.14	64.29	0.00	0.00	21.43	14.29	0.00
	Shahpur	6	24	0.00	0.00	0.00	0.00	0.00	0.00	33.33	0.00	0.00	33.33	0.00	0.00	16.67	16.67	0.00
	Sahiwal	22	235	0.00	0.00	0.00	0.00	0.00	0.00	0.00	0.00	27.27	36.36	0.00	0.00	63.64	36.36	54.55
	Kotmomin	15	79	0.00	0.00	0.00	0.00	0.00	0.00	26.67	0.00	13.33	33.33	0.00	6.67	13.33	0.00	6.67
	Bhalwal	2	9	0.00	0.00	0.00	0.00	0.00	0.00	0.00	0.00	50.00	100.00	0.00	0.00	0.00	0.00	50.00
	Bhera	10	73	0.00	0.00	0.00	0.00	0.00	0.00	30.00	0.00	0.00	50.00	0.00	0.00	20.00	0.00	10.00
KHUSHAB	Khushab	41	196	0.00	0.00	0.00	0.00	0.00	9.76	9.76	0.00	0.00	12.20	7.32	0.00	14.63	0.00	17.07
BHAKKAR	Bhakkar	7	13	28.57	0.00	0.00	0.00	0.00	57.14	0.00	0.00	14.29	100.00	0.00	0.00	28.57	0.00	14.29
MULTAN	Multan	14	126	14.29	7.14	0.00	0.00	0.00	85.71	28.57	0.00	28.57	71.43	0.00	0.00	7.14	0.00	14.29
	Shujabad	13	46	23.08	7.69	0.00	0.00	0.00	69.23	92.31	0.00	0.00	53.85	0.00	0.00	7.69	0.00	15.38
	Jalal Pur	5	28	0.00	0.00	0.00	0.00	0.00	100.00	0.00	0.00	0.00	0.00	0.00	0.00	0.00	0.00	60.00
KHANEWAL	Khaneval	3	19	0.00	0.00	0.00	0.00	0.00	66.67	100.00	0.00	0.00	100.00	33.33	0.00	33.33	0.00	0.00
	Jahanain	2	5	0.00	0.00	0.00	0.00	0.00	100.00	100.00	0.00	0.00	100.00	50.00	0.00	50.00	0.00	0.00
	Kabirwala	3	11	0.00	0.00	0.00	0.00	0.00	100.00	100.00	0.00	0.00	100.00	33.33	0.00	33.33	0.00	0.00
	Mian Channu	8	24	25.00	0.00	0.00	0.00	0.00	50.00	37.50	0.00	0.00	50.00	0.00	0.00	0.00	0.00	0.00
VEHARI	Vehari	6	14	0.00	0.00	0.00	0.00	0.00	16.67	0.00	0.00	0.00	0.00	0.00	0.00	0.00	0.00	0.00
	Mailsi	5	21	0.00	0.00	0.00	0.00	0.00	20.00	0.00	0.00	0.00	0.00	0.00	0.00	0.00	0.00	0.00
	Burewala	5	13	0.00	0.00	0.00	0.00	0.00	20.00	0.00	0.00	0.00	0.00	0.00	0.00	0.00	0.00	0.00
LODHRAN	Lodhran	6	33	16.67	0.00	0.00	0.00	0.00	83.33	0.00	0.00	0.00	16.67	16.67	0.00	16.67	0.00	0.00
	Dunya Pur	5	13	20.00	0.00	0.00	0.00	0.00	80.00	0.00	0.00	0.00	20.00	20.00	20.00	20.00	0.00	0.00
	Kehror Pacca	6	28	16.67	0.00	0.00	0.00	0.00	83.33	0.00	0.00	0.00	33.33	33.33	0.00	16.67	0.00	0.00
	Kot Addu	6	27	0.00	0.00	0.00	0.00	0.00	100.00	33.33	0.00	0.00	33.33	66.67	0.00	0.00	0.00	0.00
MUZAFFARGARH	Jatoi	6	17	0.00	0.00	0.00	0.00	0.00	100.00	16.67	0.00	0.00	16.67	66.67	0.00	0.00	0.00	0.00
	Muzaffargarh	8	46	0.00	0.00	0.00	0.00	0.00	50.00	50.00	0.00	0.00	0.00	50.00	0.00	0.00	0.00	0.00
	Alipur	10	17	0.00	0.00	0.00	0.00	0.00	30.00	40.00	0.00	0.00	30.00	20.00	0.00	0.00	0.00	0.00
LAYYAH	Layyah	4	10	0.00	0.00	0.00	0.00	0.00	25.00	50.00	0.00	0.00	50.00	0.00	0.00	25.00	0.00	0.00
	Karor	6	27	0.00	0.00	0.00	0.00	0.00	83.33	33.33	0.00	100.00	66.67	0.00	0.00	16.67	0.00	16.67
D.G.KHAN	D.G.Khan	15	32	0.00	0.00	0.00	0.00	0.00	33.33	0.00	0.00	0.00	0.00	0.00	0.00	13.33	0.00	13.33
	Kot chutta	13	43	7.69	0.00	0.00	0.00	0.00	15.38	0.00	0.00	0.00	0.00	0.00	0.00	15.38	7.69	7.69
	Taunsa	12	29	0.00	0.00	0.00	0.00	0.00	33.33	0.00	0.00	0.00	0.00	0.00	0.00	8.33	0.00	8.33
% Age	3rd week of Oct,2022	1546	10340.5	1.10	0.13	0.00	1.62	0.97	16.17	6.34	2.91	13.58	24.84	1.75	5.11	20.38	2.33	6.14
	3rd week of Oct,2021	1461	9053	2.26	0.34	0.14	0.68	0.68	16.84	10.34	2.33	9.99	21.42	1.16	7.53	23.34	2.05	6.30
OVERALL NO. OF SPOTS ABOVE AND BELOW ETL																		
TOTAL	3rd week of Oct,2022	1546	10341	17	2	0	25	15	250	98	45	210	384	27	79	315	36	95
	3rd week of Oct,2021	1461	9053	33	5	2	10	10	246	151	34	146	313	17	110	341	30	92