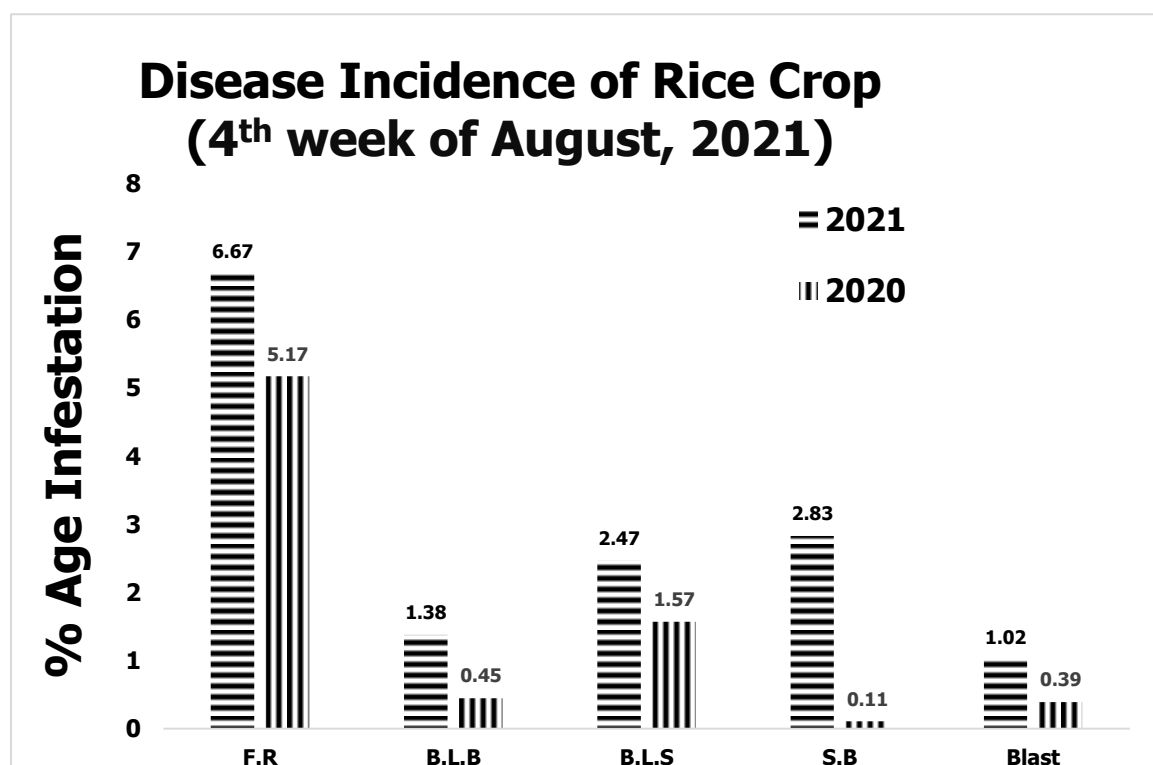
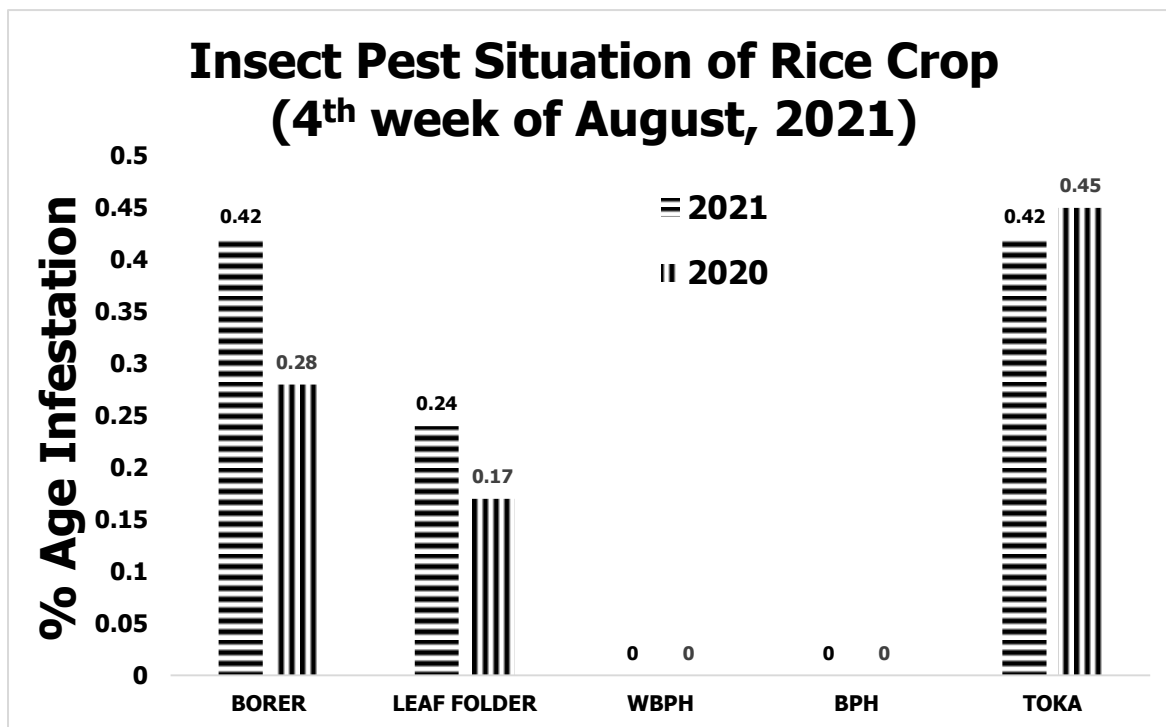


GRAPHICAL PEST SITUATION ON RICE CROP IN PUNJAB DURING 4TH WEEK OF AUGUST, 2021



PEST SITUATION ON RICE CROP IN PUNJAB DURING 4th WEEK OF AUGUST, 2021

Pest Situation of Rice Pests								
Sr. No.	Pest Name	%Age of spots						Remarks
		Current Week		Previous Week		Corresponding week of Last Year		
		AETL	BETL	AETL	BETL	AETL	BETL	
1	RICE BORER	0.42	7.88	0.28	7.07	0.28	8.37	Increasing
2	LEAF FOLDER	0.24	5.23	0.07	4.45	0.17	8.20	Increasing
3	WPBH	0.00	0.00	0.00	0.00	0.00	0.00	-
4	BPH	0.00	0.00	0.00	0.00	0.00	0.00	-
5	TOKA	0.42	18.70	0.28	17.91	0.45	15.00	Increasing
6	FOOT ROT	6.67	-	4.76	-	5.17	-	Increasing
7	B.L.B	1.38	-	0.35	-	0.45	-	Increasing
8	B.L.S	2.47	-	2.66	-	1.57	-	Decreasing
9	SHEAT H BLIGHT	2.83	-	0.42	-	0.11	-	Increasing
10	BLAST	1.02	-	0.70	-	0.39	-	Increasing
NO. OF TOTAL SPOTS VISITED		1663						
TOTAL AREA VISITED (Acres)		12680						

Tehsil wise percentage of hot spots of Rice Borer

Sr.	TEHSIL	%AGE	Sr.	TEHSIL	%AGE
1	Sahiwal	18.2	3	Pakpattan	3.8
2	Depalpure	11.1			

Tehsil wise percentage of hot spots of Rice Leaf Folder

Sr.	TEHSIL	%AGE	Sr.	TEHSIL	%AGE
1	Karor	20.0	2	Kot chutta	15.8

Tehsil wise percentage of hot spots of Rice Toka

Sr.	TEHSIL	%AGE	Sr.	TEHSIL	%AGE
1	Kot chutta	15.8	3	Chiniot	5.0
2	Sambrial	6.9	4	M.B.Din	3.6

Tehsil wise percentage of hot spots of Foot Rot

Sr.	TEHSIL	%AGE	Sr.	TEHSIL	%AGE
1	Dunya Pur	50	24	Sahiwal	10.3
2	Kehror Pacca	40	25	Muridke	10
3	Sahiwal	36.4	26	18-Hazari	10
4	Lodhran	33.3	27	Kabirwala	10
5	Jatoi	28.6	28	Sheikhupura	8.8
6	Pirmahal	26.7	29	Chak Jhumra	8.8
7	Bhera	22.2	30	Phalia	8.3
8	Sangla Hill	20	31	Jaranwala	8.3
9	Shahkot	20	32	Chunian	7.7

10	Sargodha	20	33	Ferozwala	7.5
11	Muzaffargarh	20	34	Daska	6.7
12	Nankana Sahib	17.2	35	Malikwal	5.9
13	Noshehra Virkan	16.7	36	Pakpattan	5.8
14	Khanewal	16.7	37	Pindi Bhattian	5.6
15	Mian Channu	16.7	38	Chiniot	5.0
16	Lalian	14.3	39	Hafizabad	4.8
17	Shorkot	14.3	40	Bhowana	4.3
18	Kamalia	13.6	41	M.B.Din	3.6
19	Wazirabad	13.5	42	Gujrat	3.1
20	Safdarabad	11.1	43	Pattoki	3
21	Depalpure	11.1	44	Sialkot	3
22	Baddomalhi	10.7	45	Sharqpur	3
23	Lahore	10.4			

Tehsil wise percentage of hot spots of Bacterial Leaf Blight

Sr.	TEHSIL	%AGE	Sr.	TEHSIL	%AGE
1	Sahiwal	27	9	Sialkot	5.4
2	D.G Khan	14	10	Shakargarh	4
3	18-Hazari	10.0	11	Pakpattan	4
4	Shujabad	10.0	12	Baddomalhi	4
5	Phalia	8.3	13	M.B.Din	3.6
6	Gujranwala	6.7	14	Daska	3.3
7	Noshehra Virkan	6.7	15	Jaranwala	2.1
8	Malikwal	6	16	Hafizabad	1.6

Tehsil wise percentage of hot spots of Brown Leaf Spots

Sr.	TEHSIL	%AGE	Sr.	TEHSIL	%AGE
1	Ferozwala	18	9	Jaranwala	6.3
2	Bhera	17	10	Malikwal	6
3	Sheikhupura	11.8	11	Silanwali	6
4	Hafizabad	11.1	12	Kharian	5
5	Pindi Bhattian	11.1	13	Bhowana	4.3
6	M.B.Din	10.7	14	Sahiwal	3.4
7	Phalia	8.3	15	Sharqpur	2.6
8	Shakargarh	8	16	Lahore	1.3

Tehsil wise percentage of hot spots of Sheath Blight

Sr.	TEHSIL	%AGE	Sr.	TEHSIL	%AGE
1	Lahore	18	11	Kharian	5.3
2	Gujranwala	13	12	Hafizabad	5
3	Sambrial	10.3	13	Shakargarh	4
4	Noshehra Virkan	10.0	14	Pakpattan	4
5	Ferozwala	7.5	15	Depalpure	3.7

6	Shorkot	7.1	16	M.B.Din	3.6
7	kamoke	6.7	17	Sahiwal	3.4
8	Silanwali	6	18	Gujrat	3.1
9	Bhera	6	19	Sharqpur	2.6
10	Sialkot	5	20	Chunian	2.6

Tehsil wise percentage of hot spots of Rice Blast

Sr.	TEHSIL	%AGE	Sr.	TEHSIL	%AGE
1	Sahiwal	18	6	Ferozwala	7.5
2	Multan	16	7	Kasur	3
3	18-Hazari	10.0	8	Gujranwala	3
4	Shujabad	10.0	9	Pattoki	3
5	Kamalia	9.1	10	Chunian	2.6
			11	Hafizabad	1.6

Meteorological data of the current week 2020-2021

METEOROLOGICAL DATA FOR THE 4TH WEEK OF AUG, 2021								
Districts	2021				2020			
	Temperature		R.H%	Rainfall (mm)	Temperature		RH%	Rainfall (mm)
	Max.	Min.			Max.	Min.		
Gujranwala	42.1	26.3	78.9	0.0	36.5	24.5	74.9	266.1
Hafizbad	38.0	27.0	60.0	0.0	37.0	28.0	65.0	5.0
Sialkot	38.0	29.0	74.0	30.5	35.0	25.0	72.0	28.5
Narowal	34.9	23.6	83.4	0.0	33.7	22.0	87.2	33.0
Gujrat	35.3	26.3	0.7	0.0	32.0	25.0	0.7	37.0
M.B.Din	35.0	26.1	0.7	5.1	32.0	25.0	75.0	39.0
Lahore	34.3	26.7	64.9	2.6	31.6	27.7	75.1	2.9
Sheikhupura	36.7	27.5	47.0	0.0	34.2	26.0	62.0	120.0
Ferozwala	38.0	26.0	62.5	0.0	33.3	26.6	64.9	15.0
Nankana	35.2	27.2	57.0	0.0	33.4	26.3	56.9	25.0
Kasur	34.9	26.3	50.1	0.0	32.9	26.1	68.0	0.0
Faisalabad	38.1	26.6	66.8	0.0	36.1	27.8	0.7	78.2
Jhang	38.3	28.1	55.7	0.0	36.0	25.8	60.9	0.0
Toba Tek Singh	38.3	27.7	81.4	0.0	39.0	29.7	77.3	56.0
Chiniot	39.0	28.0	42.0	0.0	38.0	26.0	41.0	0.0
Multan	36.6	28.9	66.5	0.0	38.1	32.0	67.3	2.4
Khanewal	39.3	28.5	57.4	0.0	39.7	30.7	58.1	0.0
Vehari	37.9	29.4	59.3	0.0	39.7	31.0	69.0	0.0
Lodhran	39.5	26.5	57.4	0.0	38.5	28.3	72.3	7.0
Sahiwal	38.0	27.0	64.0	0.0	36.0	27.0	72.0	23.0
Pakpattan	39.0	29.0	52.0	0.0	33.3	26.5	54.7	26.0
Okara	38.0	27.0	62.0	0.0	37.9	27.0	74.3	25.0
Bahawalpur	39.4	27.4	58.4	0.0	37.4	28.2	61.4	1.2
Bahawalnagar	38.9	27.5	58.3	0.0	36.8	25.4	59.0	0.0
R.Y.Khan	39.1	26.6	54.1	0.0	35.3	27.4	73.0	0.0
D.G. Khan	41.4	28.6	52.8	0.0	38.0	30.1	71.1	5.0
Muzaffar Garh	38.8	28.0	43.8	3.0	37.5	29.7	67.0	2.0
Rajanpur	41.7	28.5	47.5	0.0	42.4	30.7	52.7	7.0
Layyah	40.7	29.3	54.2	0.0	37.0	26.7	62.1	0.0
TOT/AVG	38.08	27.39	55.61	1.42	36.15	27.32	61.92	27.73

RECOMMENDATION

RICE BORER MANAGEMENT

- Handpick and destroy egg masses.
- Install light traps up to September to monitor moth population of stem borers.
- Use balanced Fertilizers (NPK) within 45 days after transplanting of nursery.
- Complete application of nitrogen up to 31st August because due to late application of nitrogenous fertilizer, the plant becomes succulent and dark-green which attracts the insects, and helps in their rapid multiplication along with increasing disease incidence.

BOWN LEAF SPOT MANAGEMENT

- Avoid water stress before maturity.
- Control the disease with one of the following pesticides.

S#	Common Name	Brand Name	Dose / Acre
1	Propineb 70 WP	Gift, Cover, Protest	800 gm
2	Mancozeb 80 WP	Shelter, Dithane-M	800 gm
3	Propiconazole 25 EC	Tilt	80 ml

FOOT ROT MANAGEMENT

- Uproot the diseased plants and destroy them.
- Use Potash 1 Bag within 14 days of transplanting.
- Flooding of Copper Sulphate 1.5-2 Kg/Acre.

BACTERIAL LEAF BLIGHT MANAGEMENT

- Use disease free seeds for next crop.
- Spray copper based fungicides without delay when disease incidence is observed.

PADDY BLAST MANAGEMENT

- For leaf blast, re-flood if field has been drained. Maintain water level at 3-4 inches to ensure that soil is covered.
- Avoid late use of nitrogenous fertilizers.
- Control the disease with one of the following fungicides;

S#	Common Name	Brand Name	Dose / Acre
1	Kasugamycin 6% WP	Fork	250 gm
2	Trifloxystrobin+Tebuconazole 75%WP	Nativo	65 gm
3	Azoxystrobin 25 % SC	Primacy	200 ml
4	Difenoconazole 250 EC	Score	125 ml

ECONOMIC THRESHOLD LEVELS OF RICE PESTS

INSECT PESTS	ECONOMIC THRESHOLD LEVELS
Borers (White, Yellow & Pink)	0.5% attack on rice nursery while 8-10 Moth/Trap/Night & 5% dead heart on rice crop.
Toka	3 per net on rice nursery & 5 on rice crop.
Leaf Folder	2 rolled leaves per plant in July-August & 3 rolled leaves per plant in September-October.
Brown Plant Hopper	15 Nymphs or Adults per plant in July-August & 20 Nymphs or Adults per plant in September-October. Or 7-10 Nymphs or Adults per net
White Backed Plant Hopper	15 Nymphs or Adults per plant in July-August & 20 Nymphs or Adults per plant in September-October. Or 7-10 Nymphs or Adults per net
Hispa	1 per plant
Diseases	On appearance