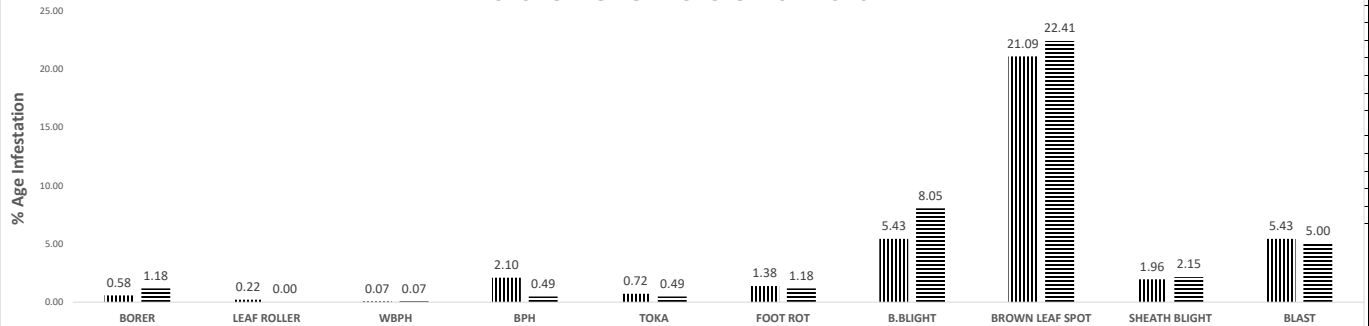


**DIRECTORATE GENERAL PEST WARNING & QUALITY CONTROL OF PESTICIDES, PUNJAB, LAHORE.**

**PEST SCOUTING REPORT OF RICE CROP FOR 4TH WEEK OF OCTOBER, 2022**

**SUMMARY**

**PEST SITUATION OF RICE CROP 2022 VS 2021**



**DISTRICT WISE SUMMARY**

DISTRICT	TEHSIL	No OF SPOTS VISITED	TOATAL AREA VISITED	HOT SPOTS					SPOTS BELOW ETL					DISEASE INCIDENCE				
				%AGE					%AGE					%AGE				
				BORER	LEAF ROLLER	WBPB	BPH	TOKA	BORER	LEAF ROLLER	WBPB	BPH	TOKA	F.R	B.L.B	B.L.S	Sheath Blight	Blast
GUJRANWALA	Gujranwala	11	72.5	0.00	0.00	0.00	0.00	9.09	9.09	0.00	0.00	9.09	27.27	0.00	18.18	36.36	0.00	0.00
	Kamoki	24	112	0.00	0.00	0.00	0.00	0.00	4.17	0.00	0.00	8.33	25.00	0.00	12.50	16.67	0.00	12.50
	Noshehra Virkan	17	85	0.00	0.00	0.00	0.00	0.00	23.53	0.00	0.00	0.00	35.29	0.00	11.76	23.53	0.00	11.76
	Wazirabad	16	114	0.00	0.00	0.00	0.00	0.00	18.75	0.00	0.00	0.00	37.50	0.00	6.25	18.75	0.00	0.00
HAFIZABAD	Hafizabad	44	445	0.00	0.00	0.00	0.00	0.00	6.82	0.00	2.27	9.09	18.18	0.00	4.55	27.27	0.00	4.55
	Pindi Bhatian	43	465	0.00	0.00	0.00	0.00	0.00	9.30	0.00	0.00	9.30	16.28	0.00	2.33	32.56	0.00	0.00
SIALKOT	Sialkot	19	338	0.00	0.00	0.00	0.00	0.00	10.53	0.00	0.00	0.00	31.58	0.00	21.05	26.32	5.26	5.26
	Sambrial	25	192	0.00	0.00	0.00	0.00	0.00	8.00	0.00	0.00	4.00	24.00	0.00	12.00	12.00	0.00	16.00
	Daska	27	467	0.00	0.00	0.00	0.00	0.00	14.81	0.00	0.00	11.11	29.63	0.00	29.63	11.11	0.00	11.11
	Pasrur	26	301.5	0.00	0.00	0.00	0.00	0.00	11.54	0.00	0.00	11.54	38.46	0.00	19.23	15.38	0.00	3.85
NAROWAL	Narowal	17	295	0.00	0.00	0.00	0.00	0.00	0.00	0.00	0.00	35.29	11.76	0.00	0.00	58.82	0.00	0.00
	Zafarwal	40	179	0.00	0.00	0.00	0.00	0.00	0.00	0.00	0.00	0.00	25.00	0.00	0.00	35.00	0.00	12.50
	Baddomalhi	20	169	0.00	0.00	0.00	0.00	0.00	0.00	0.00	0.00	40.00	10.00	0.00	0.00	35.00	0.00	0.00
	Shakar Garh	17	135	0.00	0.00	0.00	5.88	0.00	0.00	0.00	0.00	29.41	23.53	0.00	5.88	64.71	0.00	0.00
GUJRAT	Gujrat	19	150	0.00	0.00	0.00	0.00	0.00	0.00	0.00	0.00	21.05	52.63	0.00	47.37	42.11	0.00	0.00
	Kharian	9	80.5	0.00	0.00	0.00	0.00	0.00	0.00	0.00	0.00	22.22	66.67	0.00	33.33	44.44	0.00	0.00
	Jalal Pur Jattan	7	14	0.00	0.00	0.00	0.00	0.00	0.00	0.00	0.00	28.57	71.43	0.00	42.86	57.14	0.00	0.00
M.B.DIN	Phalia	18	104	0.00	0.00	0.00	0.00	0.00	5.56	0.00	0.00	11.11	16.67	0.00	11.11	22.22	0.00	5.56
	M.B.Din	17	160.5	0.00	0.00	0.00	0.00	0.00	11.76	0.00	0.00	11.76	11.76	0.00	5.88	52.94	5.88	5.88
	Malikwal	9	38.5	0.00	0.00	0.00	11.11	0.00	11.11	0.00	0.00	11.11	22.22	0.00	0.00	33.33	0.00	11.11
LAHORE	Lahore	59	640	0.00	0.00	0.00	22.03	10.17	15.25	0.00	0.00	61.02	61.02	0.00	0.00	35.59	11.86	0.00
SHEIKHUPURA	Sheikhupura	39	233	0.00	0.00	0.00	5.13	7.69	7.69	0.00	5.13	20.51	23.08	0.00	10.26	30.77	0.00	0.00
	Safdarabad	41	305	0.00	0.00	0.00	0.00	0.00	17.07	0.00	12.20	21.95	19.51	0.00	4.88	26.83	0.00	0.00
	Sharqpur	14	93	0.00	0.00	0.00	0.00	0.00	21.43	0.00	7.14	7.14	28.57	0.00	0.00	14.29	0.00	0.00
	Ferozwala	51	239	0.00	0.00	1.96	5.88	0.00	3.92	0.00	3.92	5.88	29.41	0.00	19.61	23.53	11.76	0.00
	Muridke	35	214	0.00	0.00	0.00	0.00	0.00	5.71	0.00	2.86	8.57	8.57	0.00	0.00	11.43	2.86	0.00
	Narang Mandi	8	55	0.00	0.00	0.00	0.00	0.00	0.00	0.00	12.50	25.00	25.00	0.00	0.00	25.00	0.00	0.00
NANKANA SAHIB.	Nankana Sahib	34	724	0.00	0.00	0.00	0.00	0.00	5.88	0.00	8.82	14.71	5.88	0.00	8.82	14.71	0.00	11.76
	Sangla Hill	10	21.5	0.00	0.00	0.00	0.00	0.00	10.00	0.00	0.00	20.00	20.00	0.00	10.00	20.00	0.00	10.00
	Shahkot	9	29.5	0.00	0.00	0.00	0.00	0.00	11.11	0.00	11.11	22.22	11.11	0.00	11.11	22.22	0.00	11.11
KASUR	Kasur	23	54	0.00	0.00	0.00	4.35	0.00	8.70	0.00	0.00	4.35	13.04	0.00	0.00	8.70	0.00	13.04
	Chunian	37	142	0.00	0.00	0.00	2.70	0.00	8.11	0.00	0.00	10.81	10.81	0.00	0.00	13.51	2.70	5.41
	Kot Radha Kishan	8	11	0.00	0.00	0.00	0.00	0.00	0.00	0.00	0.00	37.50	12.50	0.00	0.00	0.00	0.00	12.50
	Pattoki	27	94	0.00	0.00	0.00	3.70	0.00	0.00	0.00	0.00	11.11	7.41	0.00	3.70	11.11	0.00	7.41
FAISALABAD	Jaranwala	30	82	0.00	0.00	0.00	0.00	0.00	0.00	0.00	0.00	3.33	20.00	0.00	0.00	0.00	0.00	0.00
	Chak Jhumra	42	128.5	0.00	0.00	0.00	0.00	0.00	0.00	0.00	0.00	0.00	21.43	0.00	0.00	0.00	0.00	0.00
CHINIOT	Chiniot	22	116	0.00	0.00	0.00	0.00	0.00	0.00	0.00	0.00	0.00	36.36	0.00	0.00	22.73	0.00	0.00
	Bhowana	18	95	0.00	0.00	0.00	0.00	0.00	5.56	0.00	0.00	11.11	38.89	0.00	0.00	16.67	0.00	0.00
	Lalian	21	132	0.00	0.00	0.00	0.00	0.00	0.00	0.00	0.00	4.76	42.86	0.00	0.00	23.81	0.00	0.00
JHANG	Shorkot	6	30	0.00	0.00	0.00	0.00	0.00	0.00	0.00	0.00	0.00	16.67	0.00	0.00	16.67	0.00	0.00

DISTRICT WISE SUMMARY																		
DISTRICT	TEHSIL	No OF SPOTS VISITED	TOATAL AREA VISITED	HOT SPOTS					SPOTS BELOW ETL					DISEASE INCIDENCE				
				%AGE					%AGE					%AGE				
				BORER	LEAF ROLLER	WPBH	BPH	TOKA	BORER	LEAF ROLLER	WPBH	BPH	TOKA	F.R	B.L.B	B.L.S	Sheath Blight	Blast
	Jhang	7	29	0.00	0.00	0.00	0.00	0.00	0.00	0.00	0.00	14.29	28.57	0.00	0.00	14.29	0.00	0.00
T.T. SINGH	Kamalia	38	187	0.00	0.00	0.00	0.00	0.00	2.63	0.00	5.26	2.63	5.26	0.00	0.00	2.63	0.00	2.63
	Pir mahal	15	79	0.00	0.00	0.00	0.00	0.00	6.67	0.00	0.00	0.00	0.00	0.00	0.00	20.00	0.00	33.33
	A.P.Sial	5	18	0.00	0.00	0.00	0.00	0.00	0.00	0.00	0.00	0.00	40.00	0.00	0.00	40.00	0.00	0.00
OKARA	Depalpur	14	55	0.00	0.00	0.00	0.00	0.00	21.43	0.00	0.00	0.00	14.29	0.00	0.00	0.00	0.00	14.29
PAKPATTAN	Pakpattan	20	48	0.00	0.00	0.00	0.00	0.00	20.00	0.00	5.00	0.00	10.00	5.00	0.00	5.00	0.00	10.00
BAHAWALPUR	Bahawalpur	10	100	10.00	0.00	0.00	20.00	0.00	90.00	0.00	0.00	30.00	40.00	0.00	0.00	40.00	0.00	0.00
	Hasilpur	7	75	0.00	0.00	0.00	0.00	0.00	57.14	0.00	0.00	42.86	0.00	0.00	0.00	42.86	0.00	0.00
	Ahmadpur	7	45	0.00	0.00	0.00	0.00	0.00	71.43	0.00	0.00	0.00	57.14	0.00	0.00	28.57	0.00	28.57
	Yazman	5	26	0.00	0.00	0.00	0.00	0.00	60.00	0.00	0.00	60.00	0.00	0.00	0.00	20.00	0.00	0.00
BAHAWALNAGAR	Minchinabad	26	194	0.00	0.00	0.00	7.69	0.00	26.92	0.00	0.00	34.62	0.00	0.00	0.00	23.08	0.00	3.85
	Chishtian	6	43	0.00	0.00	0.00	16.67	0.00	50.00	0.00	0.00	33.33	16.67	0.00	0.00	16.67	0.00	0.00
	Bahawalnagar	6	38	0.00	0.00	0.00	16.67	0.00	33.33	0.00	0.00	50.00	16.67	0.00	0.00	16.67	0.00	0.00
SAHIWAL	Sahiwal	8	15	0.00	0.00	0.00	0.00	0.00	12.50	0.00	12.50	0.00	25.00	0.00	12.50	25.00	0.00	0.00
R.Y.Khan	R.Y.Khan	4	4	0.00	0.00	0.00	0.00	0.00	75.00	50.00	0.00	0.00	75.00	0.00	0.00	0.00	0.00	0.00
	Sadiqabad	2	10	0.00	0.00	0.00	0.00	0.00	100.00	100.00	0.00	0.00	0.00	0.00	0.00	0.00	0.00	0.00
	Liaqutpur	2	4	0.00	0.00	0.00	0.00	0.00	100.00	100.00	0.00	0.00	0.00	0.00	0.00	0.00	0.00	0.00
	Khan pur	2	8	0.00	0.00	0.00	0.00	0.00	100.00	100.00	0.00	0.00	100.00	0.00	0.00	0.00	0.00	0.00
SARGODHA	Sargodha	9	47	0.00	0.00	0.00	0.00	0.00	0.00	11.11	0.00	0.00	22.22	0.00	0.00	0.00	0.00	0.00
	Silanwali	11	24	0.00	0.00	0.00	0.00	0.00	27.27	18.18	0.00	0.00	72.73	0.00	0.00	9.09	18.18	0.00
	Shahpur	7	15	0.00	0.00	0.00	0.00	0.00	14.29	14.29	0.00	0.00	57.14	0.00	0.00	14.29	14.29	0.00
	Sahiwal	15	163	0.00	0.00	0.00	0.00	0.00	0.00	0.00	0.00	33.33	20.00	0.00	0.00	100.00	26.67	53.33
	Kotmomin	13	61	0.00	0.00	0.00	0.00	0.00	0.00	46.15	0.00	23.08	38.46	0.00	0.00	0.00	0.00	0.00
	Bhera	6	25	0.00	0.00	0.00	0.00	0.00	33.33	0.00	0.00	0.00	83.33	0.00	0.00	16.67	16.67	0.00
KHUSHAB	Khushab	31	282	0.00	0.00	0.00	0.00	0.00	6.45	6.45	0.00	0.00	12.90	6.45	0.00	12.90	0.00	6.45
MULTAN	Multan	15	97	13.33	13.33	0.00	0.00	0.00	46.67	46.67	0.00	33.33	40.00	0.00	0.00	6.67	0.00	20.00
	Shujabad	15	106	13.33	6.67	0.00	0.00	0.00	53.33	33.33	0.00	0.00	53.33	0.00	0.00	13.33	0.00	13.33
	Jalal Pur	3	14	0.00	0.00	0.00	0.00	0.00	66.67	0.00	0.00	0.00	0.00	0.00	0.00	0.00	0.00	33.33
KHANEWAL	Khanewal	4	16	0.00	0.00	0.00	0.00	0.00	25.00	25.00	0.00	0.00	75.00	25.00	0.00	50.00	0.00	0.00
	Jahanain	2	4	0.00	0.00	0.00	0.00	0.00	100.00	100.00	0.00	0.00	50.00	50.00	0.00	50.00	0.00	0.00
	Kabirwala	3	11	0.00	0.00	0.00	0.00	0.00	100.00	100.00	0.00	0.00	100.00	33.33	0.00	66.67	0.00	0.00
	Mian Channu	3	8	33.33	0.00	0.00	0.00	0.00	66.67	33.33	0.00	0.00	66.67	0.00	66.67	0.00	0.00	0.00
VEHARI	Vehari	5	12	0.00	0.00	0.00	0.00	0.00	20.00	0.00	20.00	0.00	0.00	0.00	0.00	0.00	0.00	0.00
	Mailsi	5	18	0.00	0.00	0.00	0.00	0.00	20.00	0.00	20.00	0.00	0.00	0.00	0.00	0.00	0.00	0.00
	Burewala	5	10	0.00	0.00	0.00	0.00	0.00	40.00	0.00	0.00	0.00	0.00	0.00	0.00	0.00	0.00	0.00
LODHRAN	Lodhran	7	43	14.29	0.00	0.00	0.00	0.00	85.71	0.00	28.57	0.00	14.29	28.57	0.00	14.29	0.00	0.00
	Dunya Pur	2	3	0.00	0.00	0.00	0.00	0.00	100.00	0.00	50.00	0.00	50.00	50.00	0.00	50.00	0.00	0.00
	Kehror Pacca	3	12	33.33	0.00	0.00	0.00	0.00	66.67	0.00	33.33	0.00	33.33	33.33	0.00	33.33	0.00	0.00
	Kot Addu	8	26	0.00	0.00	0.00	0.00	0.00	50.00	37.50	0.00	0.00	37.50	37.50	0.00	0.00	0.00	0.00
MUZAFFARGARH	Jatoi	11	28	0.00	0.00	0.00	0.00	0.00	100.00	27.27	0.00	0.00	18.18	36.36	0.00	0.00	0.00	0.00
	Muzaffargarh	7	46	0.00	0.00	0.00	0.00	0.00	42.86	28.57	0.00	0.00	0.00	0.00	0.00	0.00	0.00	0.00
	Alipur	8	18	0.00	0.00	0.00	0.00	0.00	50.00	62.50	0.00	0.00	37.50	25.00	0.00	0.00	0.00	0.00
LAYYAH	Layyah	3	11	0.00	0.00	0.00	0.00	0.00	33.33	0.00	0.00	0.00	33.33	0.00	0.00	33.33	0.00	0.00
	Karor	6	26	0.00	0.00	0.00	0.00	0.00	83.33	16.67	0.00	100.00	100.00	0.00	0.00	16.67	0.00	16.67
D.G.KHAN	D.G Khan	11	16	0.00	0.00	0.00	0.00	0.00	27.27	18.18	0.00	0.00	18.18	0.00	0.00	9.09	18.18	27.27
	Kot chutta	14	70	0.00	0.00	0.00	0.00	0.00	0.00	21.43	0.00	0.00	14.29	0.00	0.00	0.00	0.00	21.43
	Taunsa	5	13	0.00	0.00	0.00	0.00	0.00	0.00	0.00	0.00	0.00	20.00	0.00	0.00	0.00	0.00	20.00
% Age	4th week of Oct,2022	1380	9559	0.58	0.22	0.07	2.10	0.72	14.28	4.20	1.96	13.04	25.22	1.38	5.43	21.09	1.96	5.43
	4th week of Oct,2021	1441	8516	1.18	0.00	0.07	0.49	0.49	14.09	3.40	2.36	8.19	20.26	1.18	8.05	22.41	2.15	5.00
OVERALL NO. OF SPOTS ABOVE AND BELOW ETL																		
TOTAL	4th week of Oct,2022	1380	9559	8	3	1	29	10	197	58	27	180	348	19	75	291	27	75
	4th week of Oct,2021	1441	8516	17	0	1	7	7	203	49	34	118	292	17	116	323	31	72