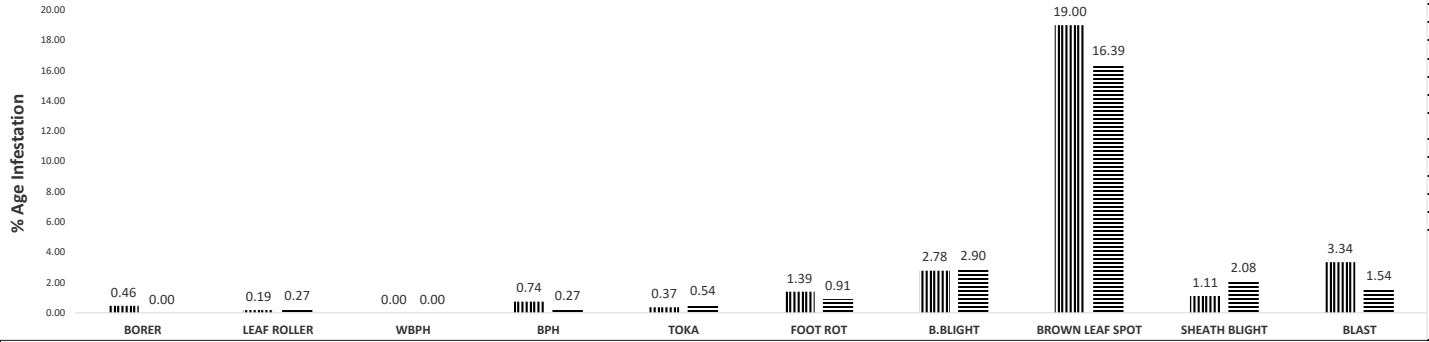


DIRECTORATE GENERAL PEST WARNING & QUALITY CONTROL OF PESTICIDES, PUNJAB, LAHORE.
PEST SCOUTING REPORT OF RICE CROP FOR 1ST WEEK OF NOVEMBER, 2022

SUMMARY

PEST SITUATION OF RICE CROP 2022 VS 2021



DISTRICT WISE SUMMARY

DISTRICT	TEHSIL	No OF SPOTS VISITED	TOATAL AREA VISITED	HOT SPOTS					SPOTS BELOW ETL					DISEASE INCIDENCE				
				%AGE					%AGE					%AGE				
				BORER	LEAF ROLLER	WPBH	BPH	TOKA	BORER	LEAF ROLLER	WPBH	BPH	TOKA	F.R	B.L.B	B.L.S	Sheath Blight	Blast
GUJRANWALA	Gujranwala	7	36	0.00	0.00	0.00	0.00	0.00	14.29	0.00	0.00	0.00	57.14	0.00	14.29	28.57	0.00	0.00
	Kamoki	19	63	0.00	0.00	0.00	0.00	0.00	0.00	0.00	0.00	5.26	21.05	0.00	0.00	15.79	0.00	10.53
	Noshehra Virkan	7	17.5	0.00	0.00	0.00	0.00	0.00	0.00	0.00	0.00	0.00	28.57	0.00	0.00	14.29	0.00	0.00
	Wazirabad	13	56	0.00	0.00	0.00	0.00	0.00	0.00	0.00	0.00	0.00	23.08	0.00	0.00	23.08	0.00	0.00
HAFIZABAD	Hafizabad	20	334	0.00	0.00	0.00	0.00	0.00	5.00	0.00	0.00	10.00	20.00	0.00	5.00	25.00	5.00	5.00
	Pindi Bhatian	17	178	0.00	0.00	0.00	5.88	0.00	11.76	0.00	0.00	11.76	17.65	0.00	5.88	23.53	11.76	0.00
SIALKOT	Sialkot	19	206	0.00	0.00	0.00	0.00	0.00	10.53	0.00	0.00	0.00	15.79	0.00	10.53	21.05	0.00	0.00
	Sambrial	19	175	0.00	0.00	0.00	0.00	0.00	0.00	0.00	5.26	0.00	31.58	0.00	10.53	5.26	0.00	5.26
	Daska	21	165	0.00	0.00	0.00	0.00	0.00	4.76	0.00	9.52	4.76	19.05	0.00	14.29	9.52	0.00	9.52
	Pasrur	26	299	0.00	0.00	0.00	0.00	0.00	7.69	0.00	0.00	7.69	23.08	0.00	11.54	11.54	0.00	3.85
NAROWAL	Narowal	14	101	0.00	0.00	0.00	0.00	0.00	0.00	0.00	0.00	50.00	28.57	0.00	0.00	35.71	0.00	0.00
	Zafarwal	47	203	0.00	0.00	0.00	0.00	0.00	0.00	0.00	0.00	0.00	34.04	0.00	4.26	8.51	0.00	8.51
	Baddomalhi	15	95	0.00	0.00	0.00	0.00	0.00	0.00	0.00	0.00	26.67	13.33	0.00	0.00	33.33	0.00	0.00
	Shakar Garh	19	130	0.00	0.00	0.00	0.00	0.00	0.00	0.00	0.00	0.00	21.05	0.00	0.00	15.79	0.00	0.00
GUJRAT	Gujrat	34	427	0.00	0.00	0.00	0.00	0.00	0.00	0.00	0.00	20.59	50.00	0.00	0.00	38.24	0.00	0.00
	Kharian	7	72	0.00	0.00	0.00	0.00	0.00	0.00	0.00	0.00	42.86	57.14	0.00	0.00	57.14	0.00	0.00
	Jalal Pur Jattan	7	14	0.00	0.00	0.00	0.00	0.00	0.00	0.00	0.00	28.57	71.43	0.00	0.00	57.14	0.00	0.00
M.B.DIN	Phalia	10	74	0.00	0.00	0.00	0.00	0.00	10.00	0.00	0.00	20.00	20.00	0.00	10.00	40.00	0.00	20.00
	M.B.Din	20	127	0.00	0.00	0.00	0.00	0.00	10.00	0.00	5.00	15.00	15.00	0.00	5.00	45.00	10.00	10.00
	Malikwal	9	39.5	0.00	0.00	0.00	11.11	0.00	11.11	0.00	0.00	11.11	22.22	0.00	11.11	33.33	11.11	11.11
LAHORE	Lahore	49	466	0.00	0.00	0.00	2.04	6.12	0.00	0.00	0.00	30.61	36.73	0.00	0.00	40.82	0.00	0.00
SHEIKHUPURA	Sheikhupura	28	99	0.00	0.00	0.00	0.00	3.57	7.14	0.00	0.00	14.29	25.00	0.00	0.00	17.86	0.00	0.00
	Safdarabad	36	150	0.00	0.00	0.00	0.00	0.00	13.89	0.00	5.56	11.11	22.22	0.00	0.00	25.00	0.00	0.00
	Sharqpur	8	19	0.00	0.00	0.00	0.00	0.00	0.00	0.00	0.00	25.00	50.00	0.00	0.00	50.00	0.00	0.00
	Ferozwala	36	166	0.00	0.00	0.00	5.56	0.00	5.56	0.00	8.33	5.56	36.11	0.00	33.33	25.00	16.67	5.56
	Muridke	30	165	0.00	0.00	0.00	0.00	0.00	6.67	0.00	3.33	10.00	10.00	0.00	0.00	16.67	0.00	0.00
	Narang Mandi	10	70	0.00	0.00	0.00	0.00	0.00	0.00	0.00	10.00	20.00	20.00	0.00	0.00	20.00	0.00	0.00
NANKANA SAHIB.	Nankana Sahib	15	313	0.00	0.00	0.00	0.00	0.00	0.00	0.00	20.00	26.67	0.00	0.00	0.00	0.00	0.00	0.00
	Sangla Hill	5	16	0.00	0.00	0.00	0.00	0.00	0.00	0.00	20.00	40.00	0.00	0.00	0.00	0.00	0.00	0.00
	Shahkot	5	58	0.00	0.00	0.00	0.00	0.00	0.00	0.00	0.00	40.00	0.00	0.00	0.00	0.00	0.00	0.00
KASUR	Kasur	20	53	0.00	0.00	0.00	0.00	0.00	5.00	0.00	0.00	10.00	10.00	0.00	0.00	10.00	0.00	5.00
	Chunian	30	75	0.00	0.00	0.00	0.00	0.00	0.00	0.00	0.00	13.33	10.00	0.00	0.00	13.33	0.00	3.33
	Kot Radha Kishan	8	16	0.00	0.00	0.00	0.00	0.00	12.50	12.50	0.00	0.00	12.50	0.00	0.00	12.50	0.00	0.00
	Pattoki	20	58	0.00	0.00	0.00	0.00	0.00	0.00	0.00	0.00	10.00	0.00	0.00	0.00	0.00	0.00	5.00
FAISALABAD	Jaranwala	19	31	0.00	0.00	0.00	0.00	0.00	0.00	0.00	0.00	0.00	15.79	0.00	0.00	10.53	0.00	0.00
	Chak Jhumra	20	36.5	0.00	0.00	0.00	0.00	0.00	0.00	0.00	0.00	0.00	20.00	0.00	0.00	10.00	0.00	0.00
CHINIOT	Chiniot	15	60	0.00	0.00	0.00	0.00	0.00	0.00	0.00	0.00	0.00	20.00	0.00	0.00	26.67	0.00	0.00
	Bhowana	20	131	0.00	0.00	0.00	0.00	0.00	0.00	0.00	0.00	0.00	25.00	0.00	0.00	30.00	0.00	0.00

DISTRICT WISE SUMMARY																		
DISTRICT	TEHSIL	No OF SPOTS VISITED	TOATAL AREA VISITED	HOT SPOTS					SPOTS BELOW ETL					DISEASE INCIDENCE				
				%AGE					%AGE					%AGE				
				BORER	LEAF ROLLER	WPBH	BPH	TOKA	BORER	LEAF ROLLER	WPBH	BPH	TOKA	F.R	B.L.B	B.L.S	Sheath Blight	Blast
	Lalian	15	97	0.00	0.00	0.00	0.00	0.00	0.00	0.00	0.00	0.00	33.33	0.00	0.00	26.67	0.00	0.00
JHANG	Jhang	10	74	0.00	0.00	0.00	0.00	0.00	0.00	0.00	0.00	0.00	30.00	0.00	0.00	20.00	0.00	0.00
T.T. SINGH	Kamalia	15	74	0.00	0.00	0.00	0.00	0.00	0.00	0.00	0.00	0.00	0.00	0.00	0.00	0.00	0.00	0.00
	Pir mahal	13	25	0.00	0.00	0.00	0.00	0.00	0.00	0.00	0.00	0.00	0.00	0.00	0.00	0.00	0.00	0.00
OKARA	Depalpur	12	60	0.00	0.00	0.00	0.00	0.00	16.67	0.00	0.00	0.00	25.00	0.00	0.00	0.00	0.00	8.33
PAKPATTAN	Pakpattan	16	35	0.00	0.00	0.00	0.00	0.00	25.00	0.00	0.00	12.50	12.50	0.00	0.00	6.25	0.00	12.50
BAHAWALPUR	Bahawalpur	9	97	11.11	0.00	0.00	22.22	0.00	66.67	0.00	0.00	22.22	55.56	0.00	0.00	44.44	0.00	0.00
	Hasilpur	5	32	0.00	0.00	0.00	0.00	0.00	40.00	0.00	0.00	0.00	100.00	0.00	0.00	60.00	0.00	0.00
	Ahmadpur	5	20	0.00	0.00	0.00	0.00	0.00	60.00	0.00	0.00	80.00	0.00	0.00	0.00	0.00	0.00	0.00
	Yazman	3	12	0.00	0.00	0.00	0.00	0.00	33.33	0.00	0.00	66.67	33.33	0.00	0.00	33.33	0.00	0.00
BAHAWALNAGAR	Minchinabad	28	173	0.00	0.00	0.00	3.57	0.00	32.14	0.00	0.00	57.14	10.71	0.00	0.00	17.86	0.00	3.57
	Chishtian	6	36	0.00	0.00	0.00	0.00	0.00	50.00	0.00	0.00	50.00	0.00	0.00	0.00	16.67	0.00	16.67
	Bahawalnagar	6	39	0.00	0.00	0.00	0.00	0.00	33.33	0.00	0.00	50.00	0.00	0.00	0.00	16.67	0.00	16.67
SAHIWAL	Sahiwal	4	5	0.00	0.00	0.00	0.00	0.00	25.00	0.00	0.00	0.00	0.00	0.00	0.00	25.00	0.00	0.00
R.Y.Khan	R.Y.Khan	4	7	0.00	0.00	0.00	0.00	0.00	50.00	0.00	0.00	0.00	75.00	0.00	0.00	0.00	0.00	0.00
	Sadiqabad	2	11	0.00	0.00	0.00	0.00	0.00	50.00	0.00	0.00	0.00	0.00	0.00	0.00	0.00	0.00	0.00
	Liaqutpur	2	4	0.00	0.00	0.00	0.00	0.00	50.00	0.00	0.00	0.00	0.00	0.00	0.00	0.00	0.00	0.00
	Khan pur	2	9	0.00	0.00	0.00	0.00	0.00	50.00	0.00	0.00	0.00	0.00	0.00	0.00	0.00	0.00	0.00
SARGODHA	Sargodha	7	19	0.00	0.00	0.00	0.00	0.00	0.00	0.00	0.00	0.00	42.86	0.00	0.00	0.00	0.00	0.00
	Silanwali	7	16	0.00	0.00	0.00	0.00	0.00	0.00	0.00	0.00	0.00	100.00	0.00	0.00	0.00	0.00	0.00
	Shahpur	6	10	0.00	0.00	0.00	0.00	0.00	0.00	0.00	0.00	0.00	50.00	0.00	0.00	0.00	0.00	0.00
	Sahiwal	13	88	0.00	0.00	0.00	0.00	0.00	0.00	0.00	0.00	0.00	0.00	0.00	0.00	0.00	0.00	0.00
	Bhera	7	15	0.00	0.00	0.00	0.00	0.00	0.00	0.00	0.00	0.00	57.14	0.00	0.00	0.00	0.00	0.00
KHUSHAB	Khushab	46	370	0.00	0.00	0.00	0.00	0.00	8.70	4.35	0.00	0.00	6.52	0.00	0.00	8.70	0.00	2.17
MULTAN	Multan	21	132	9.52	4.76	0.00	0.00	0.00	42.86	28.57	0.00	28.57	61.90	0.00	0.00	14.29	0.00	14.29
	Shujabad	14	107	14.29	7.14	0.00	0.00	0.00	50.00	57.14	0.00	0.00	42.86	0.00	0.00	21.43	0.00	7.14
	Jalal Pur	4	23	0.00	0.00	0.00	0.00	0.00	100.00	0.00	0.00	0.00	0.00	0.00	0.00	0.00	0.00	50.00
KHANEWAL	Khanewal	3	12	0.00	0.00	0.00	0.00	0.00	33.33	0.00	0.00	33.33	100.00	0.00	0.00	66.67	0.00	0.00
	Jahanain	2	6	0.00	0.00	0.00	0.00	0.00	50.00	0.00	0.00	50.00	100.00	0.00	0.00	50.00	0.00	0.00
	Kabinwala	3	7	0.00	0.00	0.00	0.00	0.00	66.67	0.00	0.00	33.33	100.00	0.00	0.00	33.33	0.00	0.00
	Mian Channu	3	17	0.00	0.00	0.00	0.00	0.00	33.33	0.00	0.00	33.33	100.00	0.00	0.00	66.67	0.00	0.00
VEHARI	Vehari	5	17	0.00	0.00	0.00	0.00	0.00	60.00	60.00	0.00	0.00	0.00	0.00	0.00	0.00	0.00	0.00
	Mailsi	5	12	0.00	0.00	0.00	0.00	0.00	80.00	40.00	0.00	0.00	0.00	0.00	0.00	0.00	0.00	0.00
	Burewala	5	19	0.00	0.00	0.00	0.00	0.00	80.00	60.00	0.00	0.00	0.00	0.00	0.00	0.00	0.00	0.00
LODHRAN	Lodhran	3	10	0.00	0.00	0.00	0.00	0.00	100.00	0.00	0.00	0.00	33.33	33.33	0.00	33.33	0.00	0.00
	Dunya Pur	2	4	0.00	0.00	0.00	0.00	0.00	100.00	0.00	0.00	0.00	0.00	50.00	0.00	50.00	0.00	0.00
	Kehror Pacca	3	12	0.00	0.00	0.00	0.00	0.00	100.00	0.00	33.33	0.00	33.33	33.33	0.00	66.67	0.00	0.00
	Kot Addu	7	25	0.00	0.00	0.00	0.00	0.00	42.86	28.57	0.00	0.00	42.86	71.43	0.00	0.00	0.00	0.00
MUZAFFARGARH	Jatoi	11	28	0.00	0.00	0.00	0.00	0.00	0.00	9.09	0.00	0.00	18.18	45.45	0.00	18.18	0.00	0.00
	Muzaffargarh	5	42	0.00	0.00	0.00	0.00	0.00	40.00	0.00	0.00	0.00	0.00	40.00	0.00	0.00	0.00	0.00
	Alipur	9	14	0.00	0.00	0.00	0.00	0.00	33.33	44.44	0.00	0.00	22.22	0.00	0.00	0.00	0.00	0.00
LAYYAH	Layyah	3	8	0.00	0.00	0.00	0.00	0.00	0.00	0.00	0.00	100.00	33.33	0.00	0.00	66.67	0.00	33.33
	Karor	4	24	0.00	0.00	0.00	0.00	0.00	50.00	0.00	0.00	75.00	100.00	0.00	0.00	25.00	0.00	25.00
% Age	1st week of Nov,2022	1079	6641.5	0.46	0.19	0.00	0.74	0.37	11.31	2.97	1.48	12.33	24.84	1.39	2.78	19.00	1.11	3.34
	1st week of Nov,2021	1104	6542	0.00	0.27	0.00	0.27	0.54	8.88	2.54	0.63	8.15	14.86	0.91	2.90	16.39	2.08	1.54
OVERALL NO. OF SPOTS ABOVE AND BELOW ETL																		
TOTAL	1st week of Nov,2022	1079	6642	5	2	0	8	4	122	32	16	133	268	15	30	205	12	36
	1st week of Nov,2021	1104	6542	0	3	0	3	6	98	28	7	90	164	10	32	181	23	17