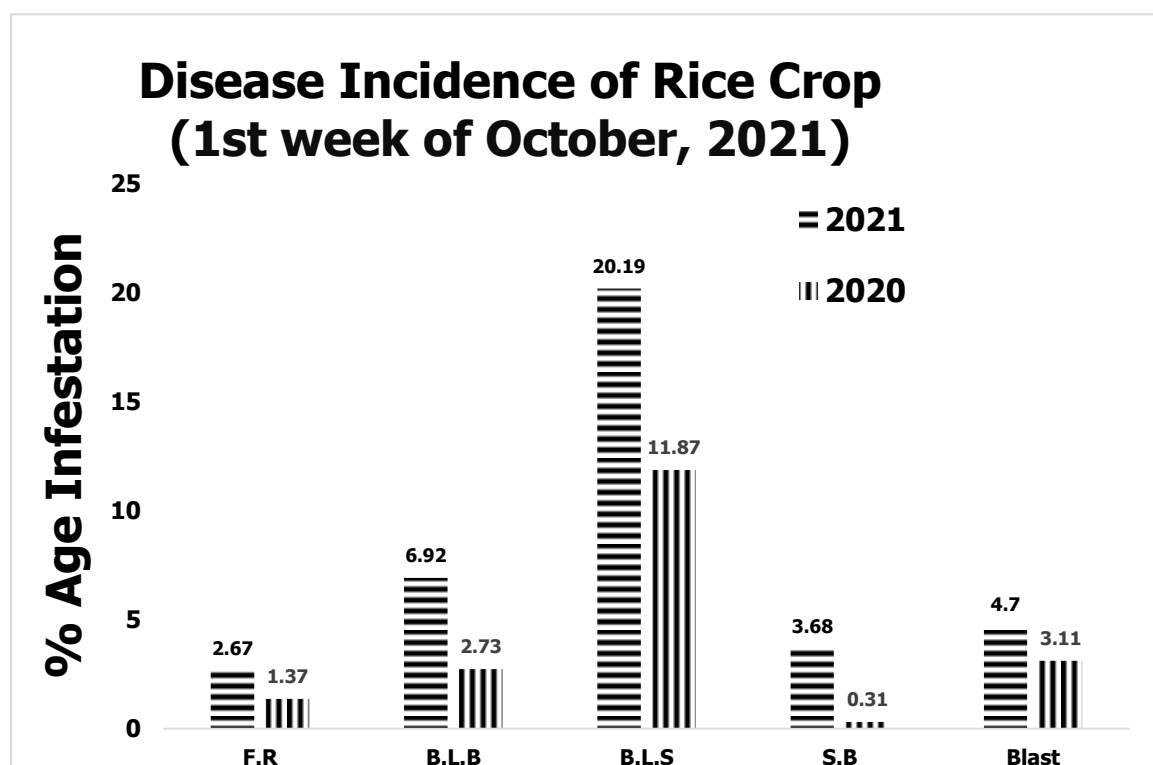
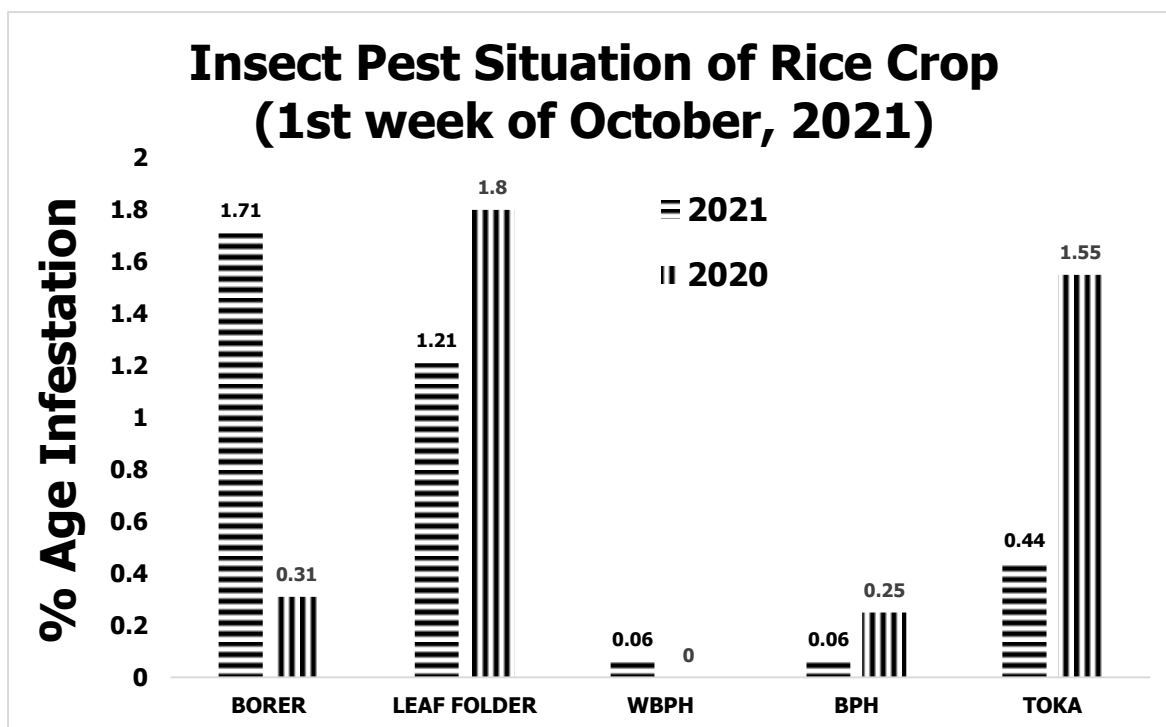


## GRAPHICAL PEST SITUATION ON RICE CROP IN PUNJAB DURING 1ST WEEK OF OCTOBER, 2021



## PEST SITUATION ON RICE CROP IN PUNJAB DURING 1st WEEK OF OCTOBER, 2021

Pest Situation of Rice Pests								
Sr. No.	Pest Name	%Age of spots						Remarks
		Current Week		Previous Week		Corresponding week of Last Year		
		AETL	BETL	AETL	BETL	AETL	BETL	
1	RICE BORER	1.71	14.98	0.46	12.38	0.31	8.57	Increasing
2	LEAF FOLDER	1.21	16.19	0.75	13.24	1.80	14.17	Decreasing
3	WPBH	0.06	1.46	0.00	0.87	0.00	0.99	Increasing
4	BPH	0.06	4.63	0.12	1.62	0.25	2.11	Decreasing
5	TOKA	0.44	21.08	0.64	21.46	1.55	19.20	Decreasing
6	FOOT ROT	2.67	-	3.88	-	1.37	-	Increasing
7	B.L.B	6.92	-	7.63	-	2.73	-	Increasing
8	B.L.S	20.19	-	16.25	-	11.87	-	Increasing
9	SHEATH BLIGHT	3.68	-	4.05	-	0.31	-	Increasing
10	BLAST	4.70	-	3.64	-	3.11	-	Increasing
<b>NO. OF TOTAL SPOTS VISITED</b>		<b>1,575</b>						
<b>TOTAL AREA VISITED (Acres)</b>		<b>10,904</b>						

### Tehsil wise percentage of hot spots of Rice Borer

Sr.	TEHSIL	%AGE	Sr.	TEHSIL	%AGE
1	Kehror Pacca	42.86	8	Jahanain	16.67
2	Lodhran	40.00	9	Mian Channu	12.50
3	Dunya Pur	33.33	10	Minchinabad	11.76
4	Kabirwala	28.57	11	Depalpure	5.41
5	R.Y.Khan	25.00	12	Bahawalpur	5.00
6	Khanewal	22.22	13	Pakpattan	4.17
7	Multan	17.65		Lahore	1.28

### Tehsil wise percentage of hot spots of Rice Leaf Folder

Sr.	TEHSIL	%AGE	Sr.	TEHSIL	%AGE
1	Shakargarh	18.18	7	Pattoki	5.41
2	Kabirwala	14.29	8	Lahore	5.26
3	Khanewal	11.11	9	Ferozwala	5.00
4	D.G Khan	8.33	10	Kot chutta	4.35
5	Malikwal	6.67	11	Sharqpur	2.78
6	Multan	5.88	12	Depalpure	2.70

### Tehsil wise percentage of hot spots of White-Backed Plant Hopper

Sr.	TEHSIL	%AGE
1	Shakargarh	4.55

### Tehsil wise percentage of hot spots of Brown Plant Hopper

Sr.	TEHSIL	%AGE
1	Minchinabad	2.94

### Tehsil wise percentage of hot spots of Rice Toka

Sr.	TEHSIL	%AGE	Sr.	TEHSIL	%AGE
1	M.B.Din	6.67	4	Chiniot	4.35
2	Phalia	5.56	5	Sambrial	4.00
3	Gujranwala	4.55			

### Tehsil wise percentage of hot spots of Foot Rot

Sr.	TEHSIL	%AGE	Sr.	TEHSIL	%AGE
1	Jatoi	50.00	11	Pakpattan	8.33
2	Kehror Pacca	42.86	12	Malikwal	6.67
3	Dunya Pur	33.33	13	Depalpure	5.41
4	Lodhran	30.00	14	Pirmahal	4.76
5	Muzaffargarh	30.00	15	M.B.Din	3.33
6	Sahiwal	25.00	16	Noshehra Virkan	3.23
7	Bhowana	14.29	17	Minchinabad	2.94
8	Lalian	14.29	18	Pattoki	2.70
9	Muridke	10.81	19	Sheikhupura	2.63
10	Chiniot	8.70			

### Tehsil wise percentage of hot spots of Bacterial Leaf Blight

Sr.	TEHSIL	%AGE	Sr.	TEHSIL	%AGE
1	Daska	60.00	17	Pirmahal	9.52
2	Narang Mandi	55.56	18	kamoke	8.82
3	Pasrur	45.00	19	Kot chutta	8.70
4	Baddomalhi	31.43	20	Sahiwal	8.33
5	Phalia	27.78	21	D.G Khan	8.33
6	M.B.Din	26.67	22	Sambrial	8.00
7	Malikwal	26.67	23	Ferozwala	7.50
8	Alipur	20.00	24	Jalal Pur Jattan	7.14
9	Sialkot	19.05	25	Bhowana	7.14
10	Sheikhupura	18.42	26	Shorkot	5.88
11	Zafarwal	15.15	27	Pakpattan	4.17
12	Kharian	14.29	28	Noshehra Virkan	3.23
13	Kamalia	14.29	29	Pattoki	2.70
14	Gujranwala	13.64	30	Gujrat	2.33
15	Narowal	12.50	31	Lahore	1.75
16	18-Hazari	12.00			

### Tehsil wise percentage of hot spots of Brown Leaf Spots

Sr.	TEHSIL	%AGE	Sr.	TEHSIL	%AGE
1	Jatoi	100.00	33	Mailsi	20.00
2	Sahiwal	91.67	34	Muridke	18.92
3	Vehari	60.00	35	Khushab	18.75
4	Shakargarh	59.09	36	Gujrat	18.60
5	Ferozwala	57.50	37	Zafarwal	18.18
6	Lalian	57.14	38	Pakpattan	16.67
7	Pirmahal	52.38	39	Depalpure	16.22

8	Sarai Alamgir	50.00	40	Pasrur	15.00
9	Bhera	46.15	41	Shahpur	14.29
10	Baddomalhi	42.86	42	Quaidabad	14.29
11	Kharian	42.86	43	Kabirwala	14.29
12	Shorkot	41.18	44	Lahore	14.04
13	Pattoki	40.54	45	Chak Jhumra	13.89
14	Burewala	40.00	46	Gujranwala	13.64
15	Jalal Pur Jattan	35.71	47	Mian Channu	12.50
16	Phalia	33.33	48	Silanwali	11.11
17	Malikwal	33.33	49	Khanewal	11.11
18	Minchinabad	32.35	50	Nankana Sahib	10.53
19	Safdarabad	32.00	51	Daska	10.00
20	M.B.Din	30.00	52	Shahkot	10.00
21	Noshehra Virkan	29.03	53	Kot Radha Kishan	10.00
22	Hafizabad	28.13	54	Muzaffargarh	10.00
23	Wazirabad	26.32	55	Sialkot	9.52
24	Pindi Bhattian	25.00	56	Kamalia	9.52
25	Sangla Hill	25.00	57	Kasur	8.57
26	Kot Momin	25.00	58	Sahiwal	8.33
27	18-Hazari	24.00	59	Sheikhupura	7.89
28	Narang Mandi	22.22	60	Jaranwala	6.90
29	Chiniot	21.74	61	kamoke	5.88
30	Bhowana	21.43	62	Sharqpur	5.56
31	Sambrial	20.00	63	Chunian	2.08
32	Bhakkar	20.00			

### Tehsil wise percentage of hot spots of Sheath Blight

Sr.	TEHSIL	%AGE	Sr.	TEHSIL	%AGE
1	Sahiwal	50.00	9	Phalia	11.11
2	Ferozwala	25.00	10	Noshehra Virkan	9.68
3	Bhera	23.08	11	kamoke	8.82
4	Malikwal	20.00	12	Lahore	7.02
5	Muridke	18.92	13	Zafarwal	6.06
6	Depalpure	16.22	14	Safdarabad	4.00
7	M.B.Din	13.33	15	Sharqpur	2.78
8	Pakpattan	12.50			

### Tehsil wise percentage of hot spots of Rice Blast

Sr.	TEHSIL	%AGE	Sr.	TEHSIL	%AGE
1	Sahiwal	50.00	15	Shorkot	11.76
2	Jalal Pur	50.00	16	Narang Mandi	11.11
3	Vehari	40.00	17	Kot Radha Kishan	10.00
4	Taunsa	40.00	18	D.G Khan	8.33
5	Pirmahal	33.33	19	Bhakkar	6.67
6	Rojhan	33.33	20	Malikwal	6.67
7	Depalpure	27.03	21	Kasur	5.71
8	Multan	23.53	22	Nankana Sahib	5.26
9	Mailsi	20.00	23	Gujranwala	4.55
10	Pakpattan	16.67	24	Chunian	4.17
11	Bhera	15.38	25	18-Hazari	4.00

12	Ferozwala	15.00	26	M.B.Din	3.33
13	Minchinabad	14.71	27	Noshehra Virkan	3.23
14	Pattoki	13.51	28	Baddomalhi	2.86

### Meteorological data of the current week 2020-2021

METEOROLOGICAL DATA FOR THE 1ST WEEK OF OCTOBER, 2021								
Districts	2021				2020			
	Temperature		R.H%	Rainfall (mm)	Temperature		RH%	Rainfall (mm)
	Max.	Min.			Max.	Min.		
Gujranwala	37.3	26.6	79.6	35.0	36.54	24.51	74.88	25
Hafizbad	35.0	24.0	62.0	11.0	38.0	19.0	60.0	0.0
Sialkot	36.0	28.0	68.4	10.0	34.5	26.7	62.9	0.0
Narowal	31.0	20.8	86.1	11.0	33.7	19.5	84.4	0.0
Gujrat	32.3	24.6	61.0	5.0	34.9	23.8	65	0
M.B.Din	35.5	25.0	0.7	17.0	35.0	25	68	7.0
Lahore	26.3	23.6	58.4	0.7	28.9	22.1	56.9	2.8
Sheikhupura	33.0	25.5	48.0	7.0	33.3	25.1	58.5	22mm
Ferozwala	35.0	22.0	67.5	2.0	29.9	22.1	72.2	-
Nankana	34.1	24.9	55.0	0.0	35.8	24.3	52.7	0.0
Kasur	33.7	26.0	65.3	2.9	37.0	22.3	38.1	0.0
Faisalabad	25.3	72.1	TR	36.3	22.2	64.3	0.0	0.0
Jhang	33.6	25.7	63.0	0	36.4	26	59.7	0.0
Toba Tek Singh	36.64	25.94	85.14	2.60	37.47	21.53	78.29	0.00
Chiniot	33.0	24.0	69.0	0.0	32.0	23.0	71.0	0.0
Multan	36.0	27.7	69.8	0.0	35.9	21.9	71.2	0.0
Khanewal	36.3	27.4	64.6	0.0	36.5	21.5	61.1	0.0
Vehari	35.0	28.0	66.6	1.0	36.3	22.6	63.7	0.0
Lodhran	34.5	26.0	73.8	3.0	34.6	22.3	70.2	0.0
Sahiwal	34.0	25.0	74.0	9.5	36.3	20.8	60.5	0.0
Pakpattan	35.0	26.0	72.0	12.2	35.0	24.1	53.6	0.0
Okara	34.0	24.0	73.0	8.6	36.6	23.9	76.5	0.0
Bahawalpur	36.9	26.1	70.3	23.5	37.1	21.7	52.7	0.0
Bahawalnagar	35.1	24.4	65.4	0.0	37.4	25.2	57.3	0.0
R.Y.Khan	35.9	25.8	66.7	0.0	38.5	24.9	47.4	0.0
D.G. Khan	35.1	23.4	54.9	0.0	37.9	23.9	56.6	0.0
Muzaffar Garh	34.8	25.2	58.3	3.0	36.6	22.2	48.8	2.0
Rajapur	36.2	27.5	55.0	5.0	39.1	27.9	58.6	0.0
Layyah	41.8	23.2	65.9	0.0	35.7	21.3	50.4	0.0
<b>TOT/AVG</b>	<b>34.43</b>	<b>26.84</b>	<b>64.25</b>	<b>7.11</b>	<b>35.13</b>	<b>24.78</b>	<b>59.70</b>	<b>1.36</b>

## Weather forecast for next 7 day in rice zone

Division	Dated	30-Sep	01-Oct	02-Oct	03-Oct	04-Oct	05-Oct	06-Oct
Faisalabad	Max.Temp.	38	38	38	35	35	36	36
	Min.Temp.	24	24	23	22	20	21	22
	Humidity %	27	27	25	24	24	14	12
Gujranwala	Max.Temp.	34	35	35	35	33	34	34
	Min.Temp.	22	22	22	21	19	20	19
	Humidity %	44	39	36	32	33	21	16
Lahore	Max.Temp.	34	36	34	35	33	33	33
	Min.Temp.	24	24	23	22	21	29	20
	Humidity %	46	42	43	33	39	22	15
Sargodha	Max.Temp.	38	37	38	34	34	36	36
	Min.Temp.	22	23	22	21	18	20	22
	Humidity %	28	30	27	23	27	14	12
Multan	Max.Temp.	39	38	38	35	35	38	38
	Min.Temp.	25	24	22	22	18	21	21
	Humidity %	26	25	22	19	24	12	10
Average Rice Region	Max.Temp.	35.66						
	Min.Temp.	21.86						
	Humidity %	26.08						

## RECOMMENDATION

### RICE BORER MANAGEMENT

- Handpick and destroy egg masses.
- Install light traps up to September to monitor moth population of stem borers.
- Use balanced Fertilizers (NPK) within 45 days after transplanting of nursery.
- Complete application of nitrogen up to 31st August because due to late application of nitrogenous fertilizer, the plant becomes succulent and dark-green which attracts the insects, and helps in their rapid multiplication along with increasing disease incidence.

### BOWN LEAF SPOT MANAGEMENT

- Avoid water stress before maturity.
- Control the disease with one of the following pesticides.

S#	Common Name	Brand Name	Dose / Acre
1	Propineb 70 WP	Gift, Cover, Protest	800 gm
2	Mancozeb 80 WP	Shelter, Dithane-M	800 gm
3	Propiconazole 25 EC	Tilt	80 ml

### FOOT ROT MANAGEMENT

- Uproot the diseased plants and destroy them.
- Use Potash 1 Bag within 14 days of transplanting.
- Flooding of Copper Sulphate 1.5-2 Kg/Acre.

## BACTERIAL LEAF BLIGHT MANAGEMENT

- Use disease free seeds for next crop.
- Spray copper based fungicides without delay when disease incidence is observed.

## PADDY BLAST MANAGEMENT

- For leaf blast, re-flood if field has been drained. Maintain water level at 3-4 inches to ensure that soil is covered.
- Avoid late use of nitrogenous fertilizers.
- Control the disease with one of the following fungicides;

S#	Common Name	Brand Name	Dose / Acre
1	Kasugamycin 6% WP	Fork	250 gm
2	Trifloxystrobin+Tebuconazole 75%WP	Nativo	65 gm
3	Azoxystrobin 25 % SC	Primacy	200 ml
4	Difenoconazole 250 EC	Score	125 ml

## ECONOMIC THRESHOLD LEVELS OF RICE PESTS

INSECT PESTS	ECONOMIC THRESHOLD LEVELS
Borers (White, Yellow & Pink)	0.5% attack on rice nursery while 8-10 Moth/Trap/Night & 5% dead heart on rice crop.
Toka	3 per net on rice nursery & 5 on rice crop.
Leaf Folder	2 rolled leaves per plant in July-August & 3 rolled leaves per plant in September-October.
Brown Plant Hopper	15 Nymphs or Adults per plant in July-August & 20 Nymphs or Adults per plant in September-October. Or 7-10 Nymphs or Adults per net
White Backed Plant Hopper	15 Nymphs or Adults per plant in July-August & 20 Nymphs or Adults per plant in September-October. Or 7-10 Nymphs or Adults per net
Hispa	1 per plant
Diseases	On appearance