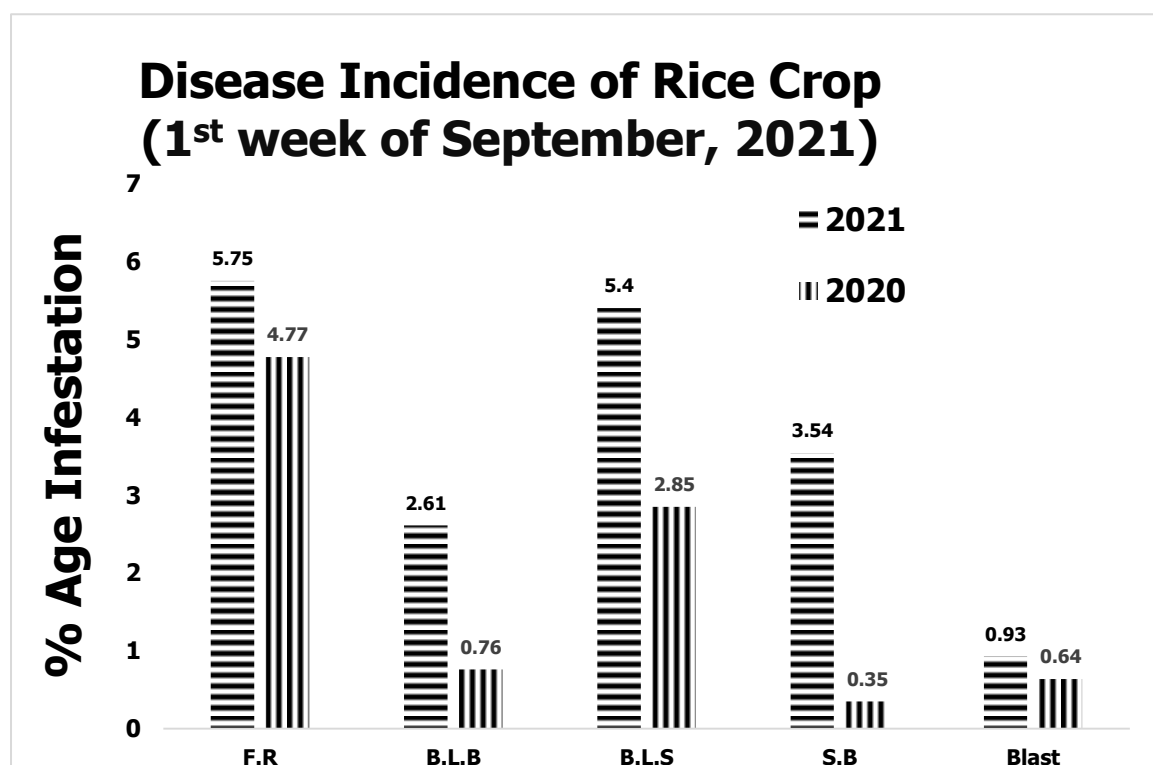
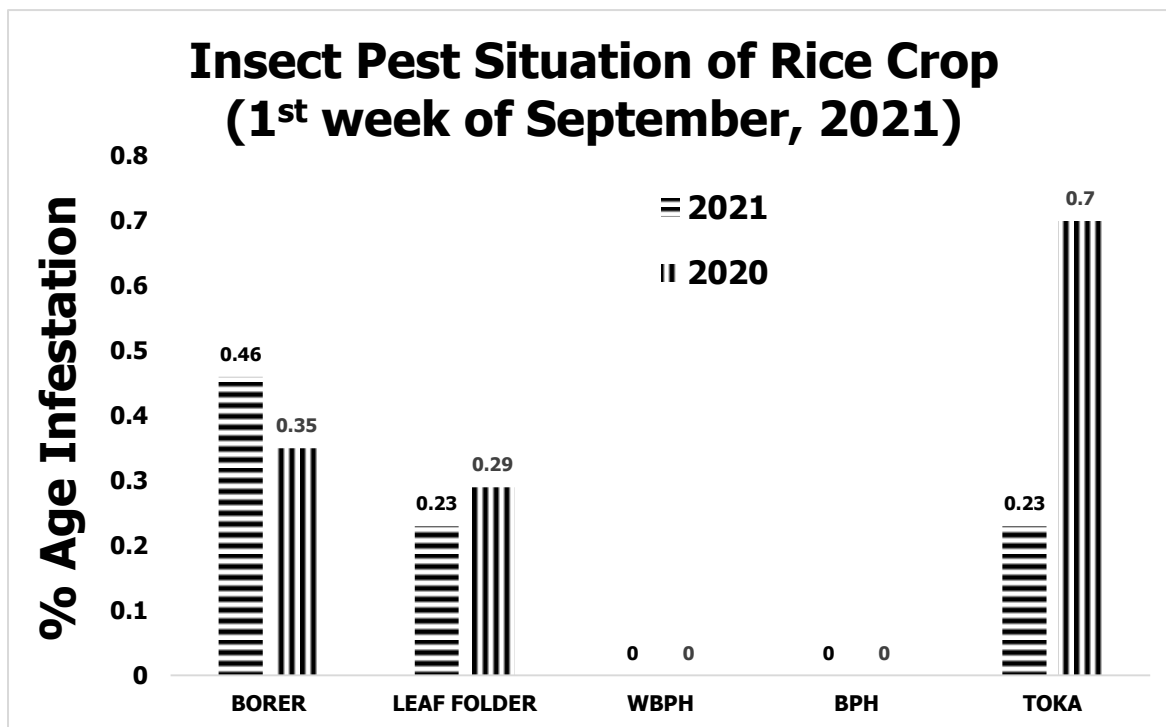


GRAPHICAL PEST SITUATION ON RICE CROP IN PUNJAB DURING 1ST WEEK OF SEPTEMBER, 2021



PEST SITUATION ON RICE CROP IN PUNJAB DURING 1ST WEEK OF SEPTEMBER, 2021

Pest Situation of Rice Pests								
Sr. No.	Pest Name	%Age of spots						Remarks
		Current Week		Previous Week		Corresponding week of Last Year		
		AETL	BETL	AETL	BETL	AETL	BETL	
1	RICE BORER	0.46	8.36	0.42	7.87	0.35	8.09	Increasing
2	LEAF FOLDER	0.23	6.91	0.24	5.23	0.29	10.01	Decreasing
3	WPBH	0	0	0	0	0	0	-
4	BPH	0	0.46	0	0	0	0	-
5	TOKA	0.23	17.23	0.42	18.70	0.70	15.13	Decreasing
6	FOOT ROT	5.75	-	6.67	-	4.77	-	Decreasing
7	B.L.B	2.61	-	1.38	-	0.76	-	Increasing
8	B.L.S	5.40	-	2.46	-	2.85	-	Increasing
9	SHEAT H BLIGHT	3.54	-	2.83	-	0.35	-	Increasing
10	BLAST	0.93	-	1.02	-	0.64	-	Decreasing
NO. OF TOTAL SPOTS VISITED			1723					
TOTAL AREA VISITED (Acres)			12471					

Tehsil wise percentage of hot spots of Rice Borer

Sr.	TEHSIL	%AGE	Sr.	TEHSIL	%AGE
1	Pakpattan	17	3	18-Hazari	10.0
2	Depalpure	11	4	Minchinabad	4

Tehsil wise percentage of hot spots of Rice Leaf Folder

Sr.	TEHSIL	%AGE	Sr.	TEHSIL	%AGE
1	Karor	20	3	D.G Khan	7.1
2	Kot chutta	9			

Tehsil wise percentage of hot spots of Rice Toka

Sr.	TEHSIL	%AGE	Sr.	TEHSIL	%AGE
1	Kot chutta	4.5	3	Kamonke	2.5
2	M.B.Din	3.6	4	Sheikhupura	2.3

Tehsil wise percentage of hot spots of Foot Rot

Sr.	TEHSIL	%AGE	Sr.	TEHSIL	%AGE
1	Jatoi	60.0	23	Shakargarh	9.7
2	Mian Channu	40.0	24	Malikwal	9.1
3	Dunya Pur	33.3	25	Sahiwal	8.7
4	Muzaffargarh	30.0	26	Zafarwal	8.6
5	Sangla Hill	25.0	27	Hafizabad	8.5
6	Pirmahal	25.0	28	Shahkot	8.3
7	Sahiwal	20.0	29	Depalpure	7.4
8	Muridke	13.9	30	M.B.Din	7.1
9	Nankana Sahib	13.6	31	Daska	5.7

10	Bhera	13.6	32	Kharian	5.6
11	Shorkot	13.3	33	kamoke	5.0
12	Ferozwala	12.5	34	Bhowana	5.0
13	Safdarabad	12.2	35	Sheikhupura	4.7
14	Kamalia	12.1	36	Baddomalhi	4.0
15	Narang Mandi	11.1	37	Sambrial	3.8
16	Pakpattan	11.1	38	Minchinabad	3.8
17	Pattoki	10.8	39	Wazirabad	3.7
18	Noshehra Virkan	10.5	40	Jaranwala	3.2
19	18-Hazari	10.0	41	Pindi Bhattian	2.8
20	Sargodha	10.0	42	Sharqpur	2.6
21	Kabirwala	10.0	43	Lahore	1.0
22	Narowal	9.7			

Tehsil wise percentage of hot spots of Bacterial Leaf Blight

Sr.	TEHSIL	%AGE	Sr.	TEHSIL	%AGE
1	Sargodha	20.0	12	D.G Khan	7.1
2	Phalia	18.2	13	Shorkot	6.7
3	M.B.Din	17.9	14	Pakpattan	5.6
4	Pasrur	16.7	15	Gujranwala	4.5
5	Kot Momin	16.7	16	Kot chutta	4.5
6	kamoke	12.5	17	Gujrat	4.3
7	Daska	11.4	18	Minchinabad	3.8
8	18-Hazari	10.0	19	Shakargarh	3.2
9	Pirmahal	10.0	20	Sialkot	3.0
10	Malikwal	9.1	21	Pindi Bhattian	2.8
11	Sambrial	7.7	22	Hafizabad	2.1

Tehsil wise percentage of hot spots of Brown Leaf Spots

Sr.	TEHSIL	%AGE	Sr.	TEHSIL	%AGE
1	Hafizabad	27.7	17	Sargodha	10.0
2	Phalia	22.7	18	Vehari	10.0
3	Wazirabad	22.2	19	Gujrat	8.7
4	Pindi Bhattian	22.2	20	Sahiwal	8.7
5	18-Hazari	20.0	21	Muridke	8.3
6	Jatoi	20.0	22	Sambrial	7.7
7	M.B.Din	17.9	23	Lalian	7.7
8	Shakargarh	16.1	24	Minchinabad	7.7
9	Noshehra Virkan	15.8	25	Shorkot	6.7
10	Pirmahal	15.0	26	Silanwali	6.3
11	Malikwal	13.6	27	Sharqpur	5.3
12	Bhera	13.6	28	Chak Jhumra	5.0
13	Ferozwala	12.5	29	Jaranwala	3.2
14	Sangla Hill	12.5	30	Pattoki	2.7
15	Kamalia	12.1	31	Sheikhupura	2.3
16	Pasrur	10.0	32	Nankana Sahib	2.3

Tehsil wise percentage of hot spots of Sheath Blight

Sr.	TEHSIL	%AGE	Sr.	TEHSIL	%AGE
1	Ferozwala	21.9	14	Pakpattan	5.6
2	kamoke	20.0	15	Noshehra Virkan	5.3
3	Muridke	16.7	16	Sheikhupura	4.7
4	Ahmadpur	16.7	17	Chunian	4.7
5	Gujranwala	13.6	18	Phalia	4.5
6	Sharqpur	13.2	19	Malikwal	4.5
7	Depalpure	11.1	20	Gujrat	4.3
8	Shahkot	8.3	21	Minchinabad	3.8
9	Kot Momin	8.3	22	Wazirabad	3.7
10	M.B.Din	7.1	23	Pindi Bhattian	2.8
11	D.G Khan	7.1	24	Pattoki	2.7
12	Nankana Sahib	6.8	25	Kasur	2.3
13	Lahore	6.0			

Tehsil wise percentage of hot spots of Rice Blast

Sr.	TEHSIL	%AGE	Sr.	TEHSIL	%AGE
1	Jalal Pur	60.0	7	Noshehra Virkan	5.3
2	Multan	20.0	8	Gujranwala	4.5
3	Taunsa	20.0	9	Malikwal	4.5
4	Depalpure	11.1	10	Ferozwala	3.1
5	18-Hazari	10.0	11	Kamalia	3.0
6	Shujabad	10.0			

Meteorological data of the current week 2020-2021

METEOROLOGICAL DATA FOR THE 1ST WEEK OF SEPTEMBER, 2021								
Districts	2021				2020			
	Temperature		R.H%	Rainfall (mm)	Temperature		RH%	Rainfall (mm)
	Max.	Min.			Max.	Min.		
Gujranwala	37.3	26.6	79.6	5.0	36.54	24.51	74.88	266.14
Hafizbad	36.0	29.0	68.0	Traces	34.0	27.0	73.0	135.0
Sialkot	36.0	26.0	70.0	4.0	35.0	24.0	69.0	10.0
Narowal	32.7	22.0	83.3	4.0	32.3	21.8	91.5	105.0
Gujrat	33.4	26.0	65.0	0.0	32.8	25.6	67.5	2.5
M.B.Din	34.0	25.0	0.7	20.0	32.4	25.6	64.0	3.0
Lahore	39.0	36.0	87.3	5.8	43.3	35.6	87.9	4.0
Sheikhupura	33.8	26.3	50.0	33.0	33.3	25.1	58.0	22.0
Ferozwala	35.0	22.0	67.9	4.0	33.2	26.7	69.8	15.0
Nankana	33.3	25.1	56.3	0.0	32.3	25.8	62.6	25.0
Kasur	33.0	25.4	60.9	1.4	32.6	25.7	69.3	10.6
Faisalabad	37.1	27.1	66.3	2.6	31.9	25.7	0.9	32.9
Jhang	35.9	26.1	58.4	0.0	31.1	24.5	90.5	0.0
Toba Tek Singh	36.2	26.2	84.8	0.0	32.7	25.4	92.2	26.9
Chiniot	39.0	29.0	43.0	1.5	38.0	27.0	52.0	4.0
Multan	35.1	26.3	67.1	0.0	34.0	29.1	84.9	69.0
Khanewal	36.7	27.7	62.4	2.0	32.0	26.0	84.3	109.0

Vehari	36.2	27.5	62.2	6.0	32.4	27.3	83.5	55.3
Lodhran	35.7	23.7	71.5	3.0	34.8	27.7	76.4	36.0
Sahiwal	37.0	25.0	72.0	9.5	33.2	25.5	83.4	27.0
Pakpattan	39.0	28.0	68.0	3.0	32.7	26.7	66.6	63.0
Okara	37.0	27.0	69.0	5.0	33.0	28.3	80.0	34.0
Bahawalpur	37.4	26.0	64.3	0.0	33.8	25.7	75.0	75.2
Bahawalnagar	38.0	27.2	56.3	0.0	36.6	25.2	62.0	0.0
R.Y.Khan	38.7	26.7	54.1	0.0	35.0	25.6	45.0	100.0
D.G. Khan	37.9	27.3	51.5	30.0	38.0	30.1	71.1	5.0
Muzaffar Garh	37.5	28.8	42.6	3.0	34.3	26.3	69.5	2.0
Rajanpur	38.0	26.5	45.4	0.0	40.3	30.3	56.8	0.0
Layyah	41.3	27.0	63.9	8.3	37.0	26.8	64.9	9.4
Average	36.45	26.64	61.79	5.40	34.44	26.57	69.87	43.00

GENERAL RECOMMENDATION

RICE BORER MANAGEMENT

- Handpick and destroy egg masses.
- Install light traps up to September to monitor moth population of stem borers.
- Use balanced Fertilizers (NPK).
- Complete application of nitrogen up to 31st August because due to late application of nitrogenous fertilizer, the plant becomes succulent and dark-green which attracts the insects, and helps in their rapid multiplication along with increasing disease incidence.

BOWN LEAF SPOT MANAGEMENT

- Avoid water stress before maturity.
- Control the disease with one of the following pesticides.

S#	Common Name	Brand Name	Dose / Acre
1	Propineb 70 WP	Gift, Cover, Protest	800 gm
2	Mancozeb 80 WP	Shelter, Dithane-M	800 gm
3	Propiconazole 25 EC	Tilt	80 ml

FOOT ROT MANAGEMENT

- Uproot the diseased plants and destroy them.
- Use Potash 1 Bag within 14 days of transplanting.
- Flooding of Copper Sulphate 1.5-2 Kg/Acre.

BACTERIAL LEAF BLIGHT MANAGEMENT

- Use disease free seeds for next crop.
- Spray copper based fungicides without delay when disease incidence is observed.

SHEATH BLIGHT MANAGEMENT

- Plant at the optimum time for a specific variety. Avoid extremely early transplanting.
- Keep optimum planting distance for proper aeration.
- Control the disease with one of the following fungicides

S#	Common Name	Brand Name	Dose / Acre
1	Trifloxystrobin+Tebuconazole 75%WP	Nativo	65 gm
2	Azoxystrobin +Difenoconazole	Amistar top, Rekarado	200 ml
3	Hexaconazole	Contaf Plus	400 ml

PADDY BLAST MANAGEMENT

- For leaf blast, re-flood if field has been drained. Maintain water level at 3-4 inches to ensure that soil is covered.
- Avoid late use of nitrogenous fertilizers.
- Control the disease with one of the following fungicides;

S#	Common Name	Brand Name	Dose / Acre
1	Kasugamycin 6% WP	Fork	250 gm
2	Trifloxystrobin+Tebuconazole 75%WP	Nativo	65 gm
3	Azoxystrobin 25 % SC	Primacy	200 ml
4	Difenoconazole 250 EC	Score	125 ml

ECONOMIC THRESHOLD LEVELS OF RICE PESTS

INSECT PESTS	ECONOMIC THRESHOLD LEVELS
Borers (White, Yellow & Pink)	0.5% attack on rice nursery while 8-10 Moth/Trap/Night & 5% dead heart on rice crop.
Toka	3 per net on rice nursery & 5 on rice crop.
Leaf Folder	2 rolled leaves per plant in July-August & 3 rolled leaves per plant in September-October.
Brown Plant Hopper	15 Nymphs or Adults per plant in July-August & 20 Nymphs or Adults per plant in September-October. Or 7-10 Nymphs or Adults per net
White Backed Plant Hopper	15 Nymphs or Adults per plant in July-August & 20 Nymphs or Adults per plant in September-October. Or 7-10 Nymphs or Adults per net
Hispa	1 per plant
Diseases	On appearance