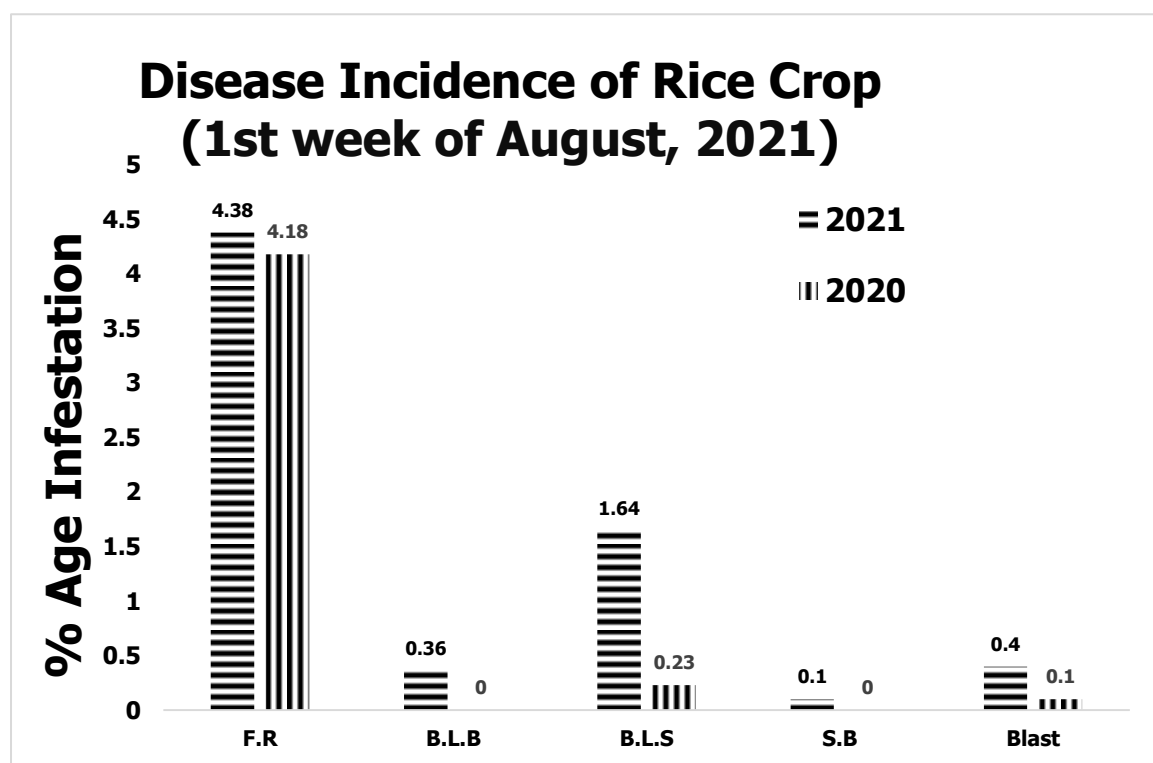
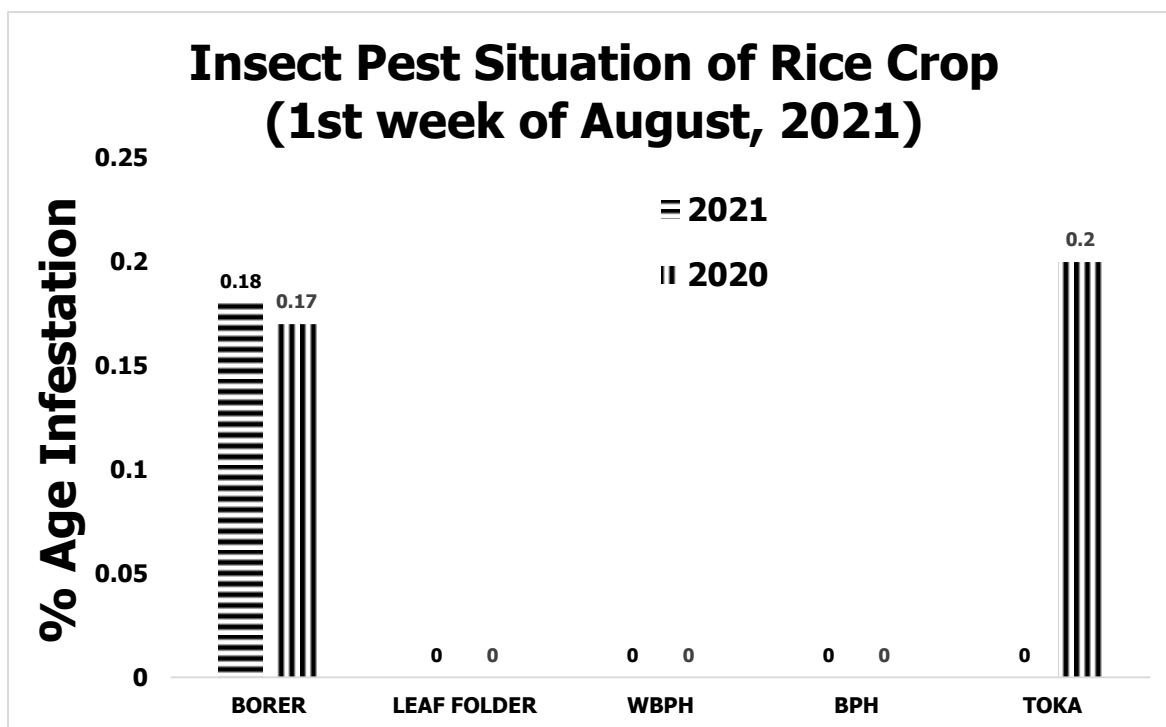


GRAPHICAL PEST SITUATION ON RICE CROP IN PUNJAB DURING 1ST WEEK OF AUGUST, 2021



PEST SITUATION ON RICE CROP IN PUNJAB DURING 1ST WEEK OF AUGUST, 2021

Pest Situation of Rice Pests								
Sr. No.	Pest Name	%age of spots						Remarks
		Current Week		Previous Week		Corresponding week of Last Year		
		AETL	BETL	AETL	BETL	AETL	BETL	
1	RICE BORER	0.18	4.6	0.07	3.1	0.17	4.7	Increasing
2	LEAF FOLDER	0	1.16	0	1.56	0	0.93	-
3	WPBH	0	0	0	0	0	0	-
4	BPH	0	0	0	0	0	0	-
5	TOKA	0	12.64	0	12.73	0.2	9.3	-
6	FOOT ROT	4.38	-	2.92	-	4.18	-	Increasing
7	B.L.B	0.36	-	0.07	-	0	-	Increasing
8	B.L.S	1.64	-	0.36	-	0.23	-	Increasing
9	SHEAT H BLIGHT	0.1	-	0	-	0	-	Low
10	BLAST	0.4	-	0	-	0.1	-	Low
NO. OF TOTAL SPOTS VISITED		1645						
TOTAL AREA VISITED (Acres)		14201						

Tehsil wise percentage of hot spots of Rice Borer

Sr.	TEHSIL	%AGE
1	Pakpattan	6.8

Tehsil wise percentage of hot spots of Foot Rot

Sr.	TEHSIL	%AGE	Sr.	TEHSIL	%AGE
1	Jatoi	30.0	17	Gujranwala	6.9
2	Ferozwala	17.9	18	Jalal Pur Jattan	6.7
3	18-Hazari	17.6	19	Shorkot	6.3
4	Safdarabad	13.5	20	Kamalia	6.1
5	Hafizabad	13.3	21	Bhowana	5.6
6	Nankana Sahib	11.5	22	Daska	5.4
7	M.B.Din	9.5	23	Jaranwala	5.3
8	Chiniot	9.5	24	Malikwal	5.0
9	Kharian	9.1	25	Pakpattan	4.5
10	Shakargarh	8.8	26	Sambrial	4.2
11	Sheikhupura	8.8	27	Muridke	4.2
12	Narowal	8.7	28	Sahiwal	3.7
13	Chak Jhumra	8.6	29	Gujrat	3.4
14	Pindi Bhattian	8.0	30	Wazirabad	2.6
15	Baddomalhi	7.7	31	Sharqpur	2.4
16	Lahore	7.1	32	Chunian	2.4

Tehsil wise percentage of hot spots of Bacterial Leaf Blight

Sr.	TEHSIL	%AGE	Sr.	TEHSIL	%AGE
1	Sahiwal	18.2	3	Narowal	4.3
2	Depalpure	6.9	4	Pattoki	2.5

Tehsil wise percentage of hot spots of Brown Leaf Spots

Sr.	TEHSIL	%AGE	Sr.	TEHSIL	%AGE
1	Nankana Sahib	26.9	7	Sahiwal	3.7
2	Safdarabad	13.5	8	Ferozwala	3.6
3	18-Hazari	11.8	9	Gujranwala	3.4
4	Hafizabad	8.9	10	Kamalia	3.0
5	Phalia	6.7	11	Wazirabad	2.6
6	Kharian	4.5	12	Jaranwala	2.6

Tehsil wise percentage of hot spots of Sheath Blight

Sr.	TEHSIL	%AGE
1	Daska	2.7

Tehsil wise percentage of hot spots of Rice Blast

Sr.	TEHSIL	%AGE	Sr.	TEHSIL	%AGE
1	Shujabad	33.3	3	Kamalia	3.0
2	Multan	20.0	4	Chunian	2.4

Meteorological data of the current week 2020-2021

METEOROLOGICAL DATA FOR THE 1ST WEEK OF AUG, 2021								
Districts	2021				2020			
	Temperature		R.H%	Rainfall (mm)	Temperature		RH%	Rainfall (mm)
	Max.	Min.			Max.	Min.		
Gujranwala	38.75	28.45	78.85	45	39.54	27.71	73.68	34.15
Hafizbad	38	28	55	Traces	39	29	51	0
Sialkot	39	28	76	59.7	36	27	73	72
Narowal	32	22	79	138	35	23	81	122
Gujrat	35	26	1	14	36	26	0.58	27
M.B.Din	36	26	0	16	37	26	57	25
Lahore	33	26	76	5	36	27	72	
Sheikhupura	38	28	52	13	38	28	54	20
Ferozwala	38	28	52	13	38	28	54	20
Nankana	40	31	55	7	38	27	58	50
Kasur	31	25	68	6	36	28	51	0
Faisalabad	36	27	75	29	40	28	72	18
Jhang	37	26	69	4	40.5	29.6	56.5	
Toba Tek Singh	35	24	90	73	39	29	75	26
Chiniot	36	27	57	12	34	28	55	8

Multan	36	30	66	7	38	31	79	0
Khanewal	37	29	69	4	39	31	73	0
Vehari	37	30	65	15	39	31	73	0
Lodhran	39	30	68	7	40	30	72	0
Sahiwal	38	27	71	4	40	30	60	0
Pakpattan	37	28	72	5	40	28	56	0
Okara	35	26	71	4	44	30	63	0
Bahawalpur	38	28	63	17	40	31	55	0
Bahawalnagar	39	28	60	0	33	23	46	0
R.Y.Khan	38	27	53	0	40	29	63	0
D.G. Khan	37	27	61	0	42	30	56	0
Muzaffar Garh	38	30	38	3	40	30	62	2
Rajanpur	41	31	44	0	43	31	51	0
Layyah	42	30	63	17	43	30	53	0
TOT/AVG	37.09	27.61	60.27	18.49	38.76	28.52	60.16	15.73

Pest Forecast for Next 07 days

Avg. Temperature for next 07 days = **32.8**

Avg. Relative Humidity for next 07 days= **47.3%**

Sr. No.	Pest Name	Opt. Temperature	%Humidity	Pest Prediction
1	Rice Borer	17-30°C	45-80%	May Increase
2	Leaf Folder	25-30°C	45-80%	-
3	WPBH	25-29°C	80-90%	-
4	BPH	28-30°C	>80-90%	-
5	TOKA	24-40°C	30-80%	-
6	FOOT ROT	30-35°C	<70%	May Increase
7	B.L.B	25-34°C	<70%	May Increase
8	B.L.S	16-36°C	86-100%	May Increase
9	SHEATH BLIGHT	28-32°C	85-100%	May be Low
10	BLAST	25-30°C	90-95%	May be Low

RECOMMENDATION

RICE BORER MANAGEMENT

- Handpick and destroy egg masses.
- Install light traps up to September to monitor moth population of stem borers.
- Use balanced Fertilizers (NPK) within 45 days after transplanting of nursery.
- Complete application of nitrogen up to 31st August because due to late application of nitrogenous fertilizer, the plant becomes succulent and dark-green which attracts the insects, and helps in their rapid multiplication along with increasing disease incidence.

BROWN LEAF SPOT MANAGEMENT

- Avoid water stress before maturity.
- Control the disease with one of the following pesticides

S#	Common Name	Brand Name	Dose / Acre
1	Propineb 70 WP	Gift, Cover, Protest	800 gm
2	Mancozeb 80 WP	Shelter, Dithane-M	800 gm
3	Propiconazole 25 EC	Tilt	80 ml

FOOT ROT MANAGEMENT

- Uproot the diseased plants and destroy them.
- Use Potash 1 Bag within 14 days of transplanting.
- Flooding of Copper Sulphate 1.5-2 Kg/Acre.

BACTERIAL LEAF BLIGHT MANAGEMENT

- Use disease free seeds for next crop.
- Spray copper based fungicides without delay when disease incidence is observed.

PADDY BLAST MANAGEMENT

- For leaf blast, re-flood if field has been drained. Maintain water level at 3-4 inches to ensure that soil is covered.
- Avoid late use of nitrogenous fertilizers.
- Control the disease with one of the following fungicides;

S#	Common Name	Brand Name	Dose / Acre
1	Kasugamycin 6% WP	Fork	250 gm
2	Trifloxystrobin+Tebuconazole 75%WP	Nativo	65 gm
3	Azoxystrobin 25 % SC	Primacy	200 ml
4	Difenoconazole 250 EC	Score	125 ml

ECONOMIC THRESHOLD LEVELS OF RICE PESTS

INSECT PESTS	ECONOMIC THRESHOLD LEVELS
Borers (White, Yellow & Pink)	0.5% attack on rice nursery 8-10 Moth/Trap/Night or 5% dead heart on rice crop.
Toka	3 per net on rice nursery & 5 per net on rice crop.
Leaf Roller	2 rolled leaves per plant in July-August & 3 rolled leaves per plant in September-October.
Brown Plant Hopper	15 Nymphs or Adults per plant in July-August & 20 Nymphs or Adults per plant in September-October. Or 7-10 Nymphs or Adults per net
White Backed Plant Hopper	15 Nymphs or Adults per plant in July-August & 20 Nymphs or Adults per plant in September-October. Or 7-10 Nymphs or Adults per net
Hispa	1 per plant
Diseases	On appearance