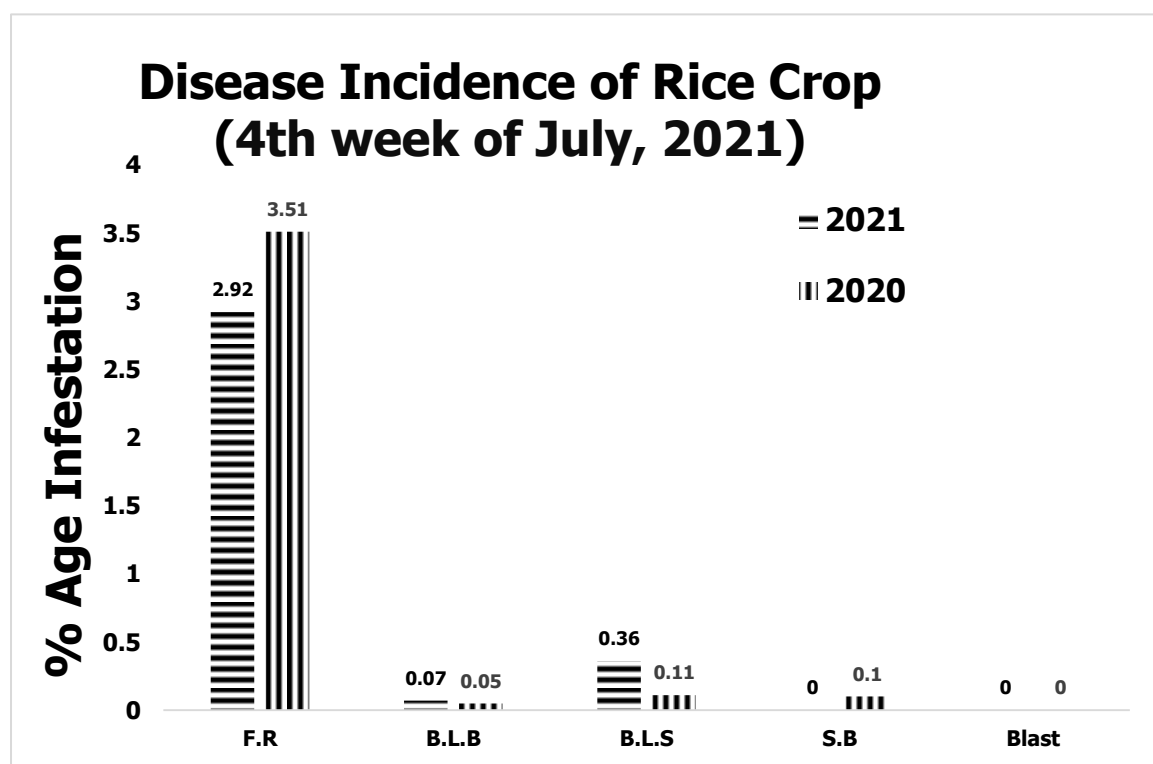
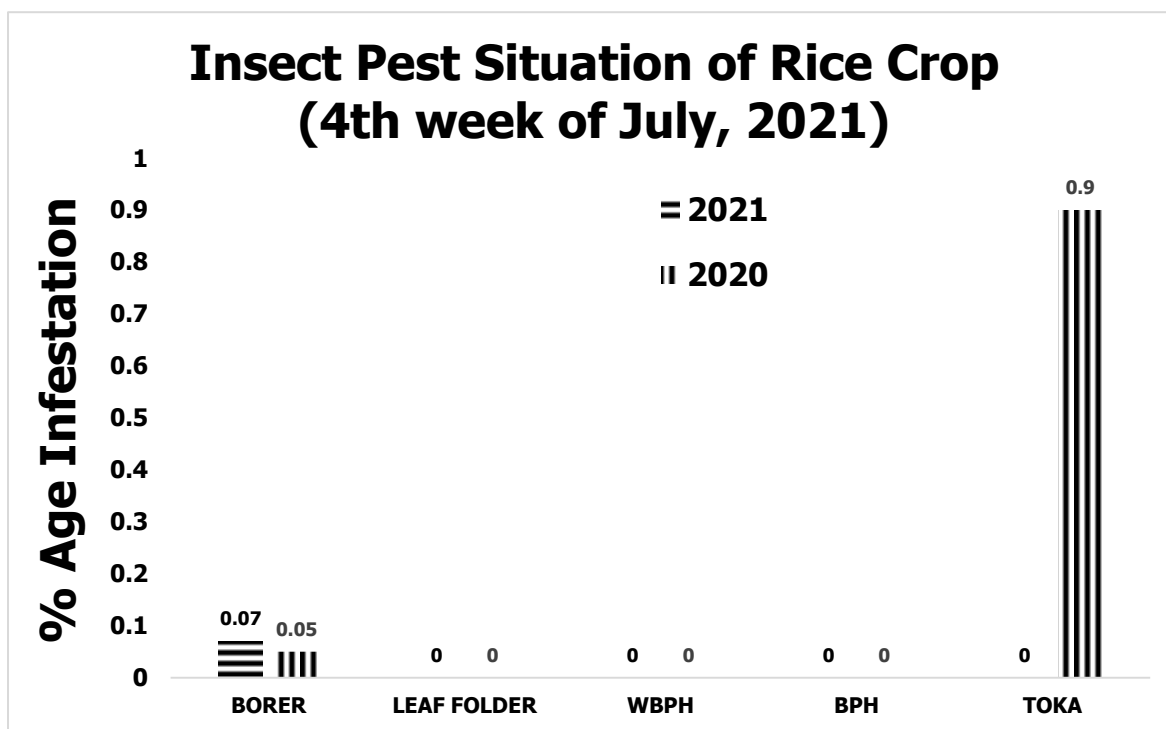


## GRAPHICAL PEST SITUATION ON RICE CROP IN PUNJAB DURING 4TH WEEK OF JULY, 2021



## PEST SITUATION ON RICE CROP IN PUNJAB DURING 4<sup>TH</sup> WEEK OF JULY, 2021

Pest Situation of Rice Pests								
Sr. No.	Pest Name	%age of spots						Remarks
		Current Week		Previous Week		Corresponding week of Last Year		
		AETL	BETL	AETL	BETL	AETL	BETL	
1	RICE BORER	0.07	3.1	0.08	2.1	0.05	3.2	Low
2	LEAF FOLDER	0	1.56	0	1.77	0	0.33	Low
3	WPBH	0	0	0	0	0	0	-
4	BPH	0	0	0	0	0	0	-
5	TOKA	0	12.73	0.1	9.73	0.9	8.54	Low
6	FOOT ROT	2.92	-	2.09	-	3.51	-	<b>Increasing</b>
7	B.L.B	0.07	-	0	-	0.05	-	Low
8	B.L.S	0.36	-	0.24	-	0.11	-	<b>Increasing</b>
9	SHEAT H BLIGHT	0	-	0	-	0.1	-	-
10	BLAST	0	-	0.1	-	0.1	-	-
<b>NO. OF TOTAL SPOTS VISITED</b>			<b>1406</b>					
<b>TOTAL AREA VISITED (Acres)</b>			<b>10288</b>					

### Tehsil wise percentage of hot spots of Rice Borer

Sr.	TEHSIL	%AGE
1	Minchinabad	4.0

### Tehsil wise percentage of hot spots of Foot Rot

Sr.	TEHSIL	%AGE	Sr.	TEHSIL	%AGE
1	Jatoi	28.6	14	Bhowana	5.6
2	Kharian	20.0	15	Chunian	4.9
3	Lalian	14.3	16	Sambrial	4.8
4	Shakargarh	13.0	17	Nankana Sahib	4.8
5	Sangla Hill	12.5	18	Sheikhupura	4.2
6	Shahkot	9.3	19	Safdarabad	4.2
7	Hafizabad	8.3	20	Muridke	4.2
8	Wazirabad	8.0	21	Pasrur	3.2
9	M.B.Din	7.7	22	Lahore	2.7
10	Kamonki	7.1	23	Sharqpur	2.7
11	Narowal	6.3	24	Ferozwala	2.7
12	Pindi Bhattian	6.1	25	Pattoki	2.5
13	Phalia	5.6			

### Tehsil wise percentage of hot spots of Bacterial Leaf Blight

Sr.	TEHSIL	%AGE
1	Bhowana	5.56

### Tehsil wise percentage of hot spots of Brown Leaf Spots

Sr.	TEHSIL	%AGE	Sr.	TEHSIL	%AGE
1	Dunya Pur	25.0	4	Phalia	5.6
2	Malikwal	8.3	5	Sahiwal	5.3
3	M.B.Din	7.7			

### Meteorological data of the current week 2020-2021

METEOROLOGICAL DATA FOR THE 4TH WEEK OF JULY, 2021								
Districts	2021				2020			
	Temperature		R.H%	Rainfall (mm)	Temperature		RH%	Rainfall ( mm)
	Max.	Min.			Max.	Min.		
Gujranwala	38.75	28.45	62.15	142	37.51	28.44	64.87	30
Hafizbad	38	29	61	110	40	31	52	0
Sialkot	38	29	75	79.8	36	27	72	77
Narowal	33	22	82	0	34	24	82	18
Gujrat	37	28	54	113	40	33	53	20
M.B.Din	35	24	1	100	40	33	53	32
Lahore	33	27	74	6	31	25	48	0
Sheikhupura	38	26	59	110	38	26	59	34
Ferozwala	32	28	73	3	35	28	58	5
Nankana	40	31	55	55	38	27	58	50
Kasur	31	25	49	0	35	27	38	0
Faisalabad	36	27	88	88	40	27	73	80
Jhang	38	29	64	0	39	22	61	1
Toba Tek Singh	38	26	82	62	38	27	80	14
Chiniot	37	28	74	33	38	26	68	26
Multan	40	31	70	0	36	28	81	64
Khanewal	39	30	62	0	36	29	61	15
Vehari	38	31	63	0	37	30	73	91
Lodhran	40	30	70	0	37	28	74	63
Sahiwal	36	29	73	0	35	26	73	34
Pakpattan	37	30	71	0	33	27	60	41
Okara	35	28	71	0	34	29	73	60
Bahawalpur	40	30	59	32	38	29	65	33
Bahawalnagar	38	28	60	0	37	26	71	32
R.Y.Khan	39	30	50	0	39	28	48	13
D.G. Khan	41	30	60	0	42	30	56	0
Muzaffargarh	42	31	37	0	37	27	66	2
Rajanpur	40	31	44	0	41	31	49	4
Layyah	46	31	57	24	39	29	42	0
<b>TOT/AVG</b>	<b>37.69</b>	<b>28.49</b>	<b>62.08</b>	<b>33.04</b>	<b>37.18</b>	<b>27.85</b>	<b>62.45</b>	<b>28.92</b>

<b>Pest Forecast for Next 07 days</b>				
Avg. Temperature for next 07 days = <b>32.1</b>				
Avg. Relative Humidity for next 07 days= 49%				
Sr. No.	Pest Name	Opt. Temperature	%Humidity	Pest Prediction
1	Rice Borer	17-30°C	45-80%	May be Observed
2	Leaf Folder	25-30°C	45-80%	May be Observed
3	WPBH	25-29°C	80-90%	-
4	BPH	28-30°C	>80-90%	-
5	TOKA	24-40°C	30-80%	May Sustain
6	FOOT ROT	30-35°C	<70%	<b>May Increase</b>
7	B.L.B	25-34°C	<70%	May be Observed
8	B.L.S	16-36°C	86-100%	<b>May Increase</b>
9	SHEATH BLIGHT	28-32°C	85-100%	-
10	BLAST	25-30°C	90-95%	-

## **RECOMMENDATION**

### **RICE BORER MANAGEMENT**

- Handpick and destroy egg masses.
- Install light traps up to September to monitor moth population of stem borers.
- Use balanced Fertilizers (NPK) within 45 days after transplanting of nursery.
- Complete application of nitrogen up to 31<sup>st</sup> August because due to late application of nitrogenous fertilizer, the plant becomes succulent and dark-green which attracts the insects, and helps in their rapid multiplication along with increasing disease incidence.

### **BROWN LEAF SPOT MANAGEMENT**

- Avoid water stress before maturity.
- Control the disease with one of the following pesticides

S#	Common Name	Brand Name	Dose / Acre
1	Propineb 70 WP	Gift, Cover, Protest	800 gm
2	Mancozeb 80 WP	Shelter, Dithane-M	800 gm
3	Propiconazole 25 EC	Tilt	80 ml

### **FOOT ROT MANAGEMENT**

- Uproot the diseased plants and destroy them.
- Use Potash 1 Bag within 14 days of transplanting.
- Flooding of Copper Sulphate 1.5-2 Kg/Acre.

## BACTERIAL LEAF BLIGHT MANAGEMENT

- Use disease free seeds for next crop.
- Spray copper based fungicides without delay when disease incidence is observed.

## PADDY BLAST MANAGEMENT

- For leaf blast, re-flood if field has been drained. Maintain water level at 3-4 inches to ensure that soil is covered.
- Avoid late use of nitrogenous fertilizers.
- Control the disease with one of the following fungicides;

S#	Common Name	Brand Name	Dose / Acre
1	Kasugamycin 6% WP	Fork	250 gm
2	Trifloxystrobin+Tebuconazole 75%WP	Nativo	65 gm
3	Azoxystrobin 25 % SC	Primacy	200 ml
4	Difenoconazole 250 EC	Score	125 ml

## ECONOMIC THRESHOLD LEVELS OF RICE PESTS

INSECT PESTS	ECONOMIC THRESHOLD LEVELS
Borers (White, Yellow & Pink)	0.5% attack on rice nursery 8-10 Moth/Trap/Night or 5% dead heart on rice crop.
Toka	3 per net on rice nursery & 5 per net on rice crop.
Leaf Roller	2 rolled leaves per plant in July-August & 3 rolled leaves per plant in September-October.
Brown Plant Hopper	15 Nymphs or Adults per plant in July-August & 20 Nymphs or Adults per plant in September-October. Or 7-10 Nymphs or Adults per net
White Backed Plant Hopper	15 Nymphs or Adults per plant in July-August & 20 Nymphs or Adults per plant in September-October. Or 7-10 Nymphs or Adults per net
Hispa	1 per plant
Diseases	On appearance