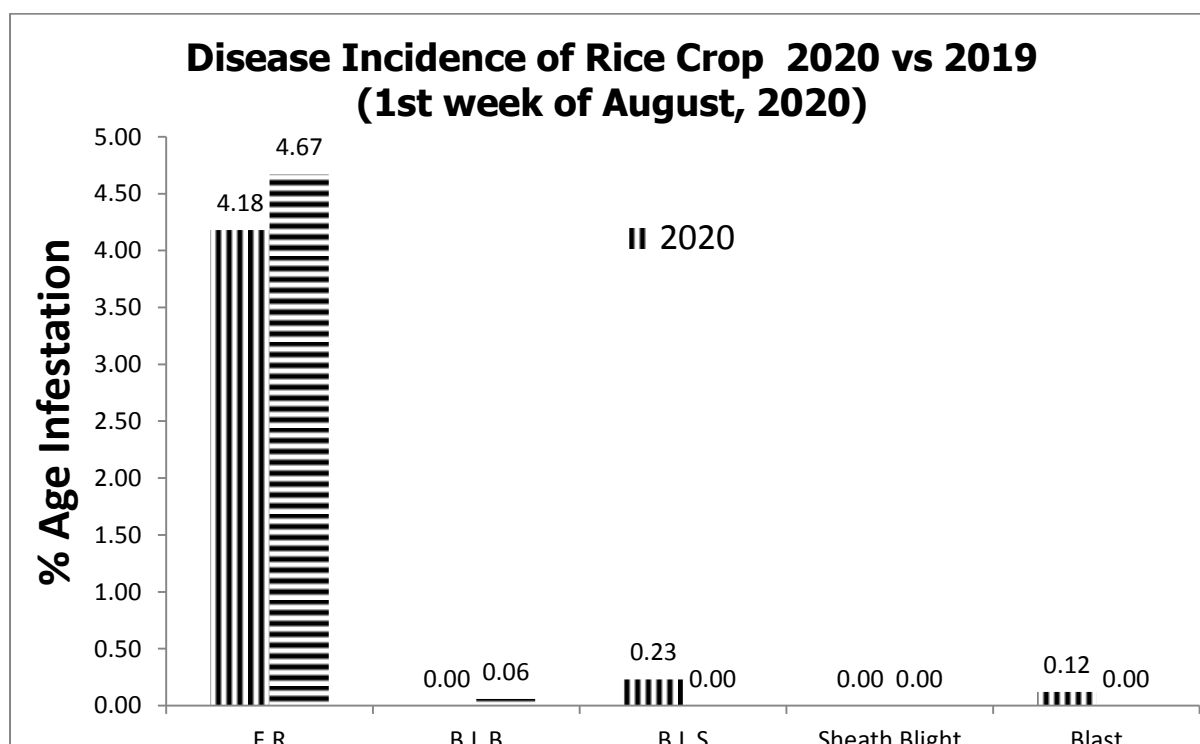
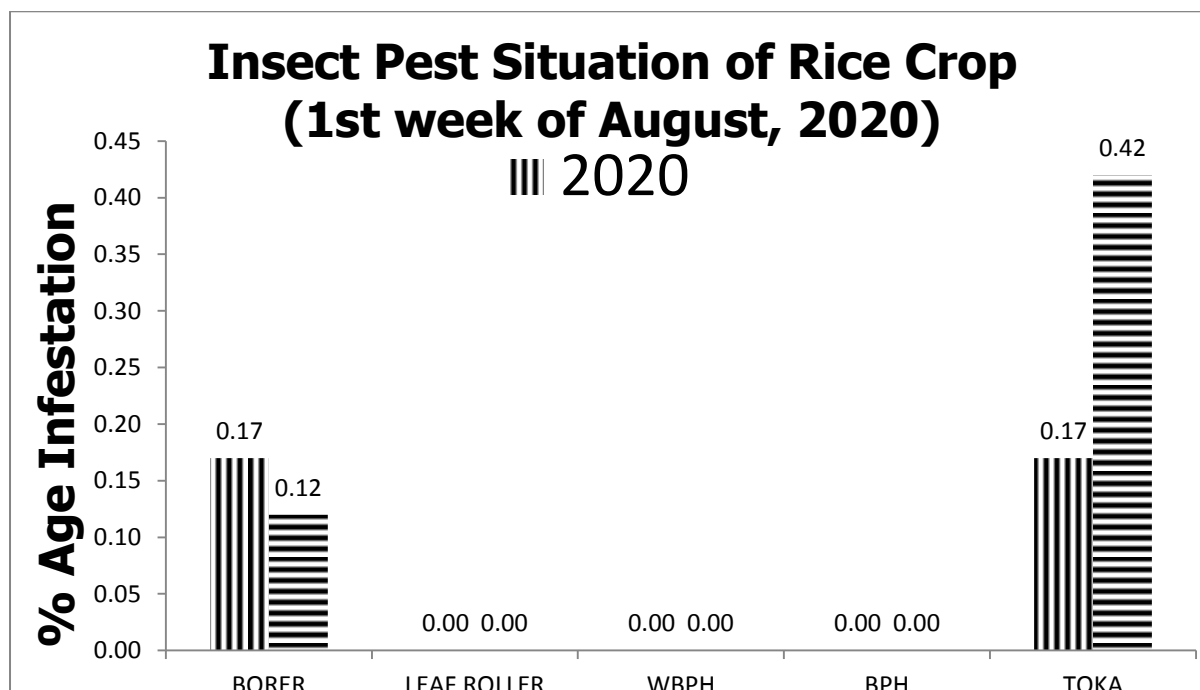


## GRAPHICAL PEST SITUATION ON RICE CROP IN PUNJAB DURING 1<sup>ST</sup> WEEK OF AUGUST, 2020



## PEST SITUATION ON RICE CROP IN PUNJAB DURING 1ST WEEK OF AUGUST, 2020

Pest Situation of Rice Pests								
Sr. No.	Pest Name	%age of spots						Remarks
		Current Week		Previous Week		Corresponding week of Last Year		
		AETL	BETL	AETL	BETL	AETL	BETL	
1	Rice Borer	0.17	4.70	0.05	3.18	0.12	2.57	Stable
2	Leaf Folder	0.00	0.93	0.00	0.33	0.00	0.66	Stable
3	WPBH	0.00	0.00	0.00	0.00	0.00	0.00	-
4	BPH	0.00	0.00	0.00	0.00	0.00	0.00	-
5	TOKA	0.17	9.34	0.88	8.55	0.42	6.16	Stable
6	FOOT ROT	4.18	-	3.51	-	4.67	-	Increasing
7	B.L.B	0.00	-	0.05	-	0.06	-	Stable
8	B.L.S	0.23	-	0.11	-	0.00	-	Stable
9	SHEATH BLIGHT	0.00	-	0.05	-	0.00	-	Stable
10	BLAST	0.12	-	0.05	-	0.00	-	Stable
<b>NO. OF TOTAL SPOTS VISITED</b>		<b>1724</b>						
<b>TOTAL AREA VISITED (Acres)</b>		<b>15282.8</b>						

### Tehsil wise percentage of hot spots of Rice Borer

Sr#	TEHSIL	%AGE
1	Burewala	25
2	Vehari	20
3	Mailsi	20

### Tehsil wise percentage of hot spots of Rice Leaf Folder

No hot spot found.

### Tehsil wise percentage of hot spots of White-Backed Plant Hopper

No hot spot found.

### Tehsil wise percentage of hot spots of Brown Plant Hopper

No hot spot found.

### Tehsil wise percentage of hot spots of Toka

Sr#	TEHSIL	%AGE
1	Chiniot	4.00
2	Bohawana	3.75
3	Lahore	1.09

### Tehsil wise percentage of hot spots of Foot Rot

Sr#	TEHSIL	%AGE
1	Safderabad	17.78
2	Chak Jhumra	16.00
3	Sial Koat	12.00

4	Sambrial	10
5	Shah Koat	10
6	Sheikhupura	9.52
7	Ferozwal	7.89
8	Pattoki	7.69
9	Kasur	7.14
10	Daska	6.67
11	Lahore	6.52
12	Chunian	6.06
13	Pindi Bhattian	6.00
14	Hafiz Abad	5.88
15	Phalia	5.66
16	Gujranwala	5.41
17	Wazir abad	4.55
18	Malik wal	4.55
19	Psror	3.45
20	Nankana Shahb	3.45
21	Murid ka	3.33
22	Gujrat	3.23
23	M.B.Din	3.13
24	Jaranwala	3.13
25	Bado mallahi	2.56
26	Shakargarh	2.50
27	Kamo ki	2.44
28	Zafer wal	2.04

### Tehsil wise percentage of hot spots of Brown Leaf Spot

Sr#	TEHSIL	%AGE
1	Vehari	20
2	Minchen Abad	6.89
3	Bhowana	3.7

### Tehsil wise percentage of hot spots of Brown Leaf Blight

No hot spot found.

### Tehsil wise percentage of hot spots of Blast

Sr#	TEHSIL	%AGE
1	Kot chatta	20.00
2	D.G.Khan	20.00

### Tehsil wise percentage of hot spots of Sheath Blight

No hot spot found

## FORECAST FOR THE NEXT WEEK

### Meteorological data of the current week 2019-2020

METEOROLOGICAL DATA FOR THE 1ST WEEK AUGUST 2020 RICE ZONE								
Districts	2020				2019			
	Temperature		R.H%	Rainfall (mm)	Temperature		RH%	Rainfall (mm)
	Max.	Min.			Max.	Min.		
LAHORE	36.1	26.7	71.1		33.1	23.4	73.7	
SHEIKHUPURA	38.21	27.74	54	20	41.51	26.81	49	
FEROZWALA	36.16	26.66	59.5	15	32.76	26.1	73.77	73
NANKANA	36	26.89	59.25	Traces	32.42	25.14	80	10
KASUR	35.28571	27.28571	66	4.714286	34.42857	28.71429	62.14286	15
GUJRANWALA	39.54	27.71	73.68	34.15	34.54	23.89	77.84	31.17
HAFIZABAD	38	30	55	4	38.14	28.76	36.14	1
SIALKOT	38°C	24°C	0.73	288.4mm	40.02	35.8	48.62	130 mm
NAROWAL	32.66	22.55	86.05	28	35.25	23.37	81.37	122
GUJRAT	36.11	26.27	0.58	27	35.08	26	61	-
M.B.DIN	42	27	43	11	37	25.71	56	13.65
FAISALABAD	39.8	28.08	71.7	18.4	40.6	30	74.2	12.6
JHANG	40.5	29.6	56.5	0	37.3	27.9	62.3	0
TOBA TEK SINGH	39.5	29.11	74.5	26.1	37.28	27.64	82.2	0
MULTAN	38	31.1	79.15	0	36.2	29.5	76.1	28.2
KHANEWAL	38.77778	30.55556	73.44444	0	36.625	28	64.75	2
VEHARI	39.5	30.2	72.4	0	36.8	28.4	72.35	50
LODHRAN	39.21429	31.28571	72.71429	0	37.28571	28.42857	65.14286	0
SAHIWAL	39.96	29.6	60	0	36.5	27.8	64.4	0
PAKPATTAN	39.89	27.67	55.89	0	42.67	26.56	50.67	0
OKARA	44	30.48	63	0	40.26	28.16	61	0
BAHAWALPUR	40.76	30.66667	53.25		39.48333	29.85	61.25	Traces
BAHAWALNAGAR	41	29.05	59.95	0.2	36.05	27.2	67.2	0.461538
R.Y.KHAN	40.44	29.33	62.78	0	40.67	28.78	75.11	0
D.G. KHAN	42.29	30.43	58.36	17.00	40.57	30.29	57.50	14.00
MUZAFFAR GARH	39.85714	30	54.07143	0	36.37143	27.97143	56.5	0
RAJANPUR	40.6	32.4	60.87	0	39.3	29	65.12	10
LAYYAH	38.85714	29.57143	42	8	34.85714	28.85714	44.14286	33
TOT/AVG	39.00	28.81	58.55	8.90	37.25	27.74	64.27	18.09

<b>Pest Forecast for Next 15 days</b>				
Avg. Temperature for next 15 days = <b>30.82</b>				
Avg. Relative Humidity for next 15 days = <b>40.35%</b>				
Sr. No.	Pest Name	Opt. Temperature	%Humidity	Pest Prediction
1	Rice Borer	17-30°C	45-80%	Stable
2	Leaf Folder	25-30°C	45-80%	Stable
3	WPBH	25-29°C	80-90%	-
4	BPH	28-30°C	>80-90%	-
5	TOKA	24-40°C	30-80%	Stable
6	FOOT ROT	30-35°C	<70%	Increasing
7	B.L.B	25-34°C	<70%	Stable
8	B.L.S	16-36°C	86-100%	Stable
9	SHEAT H BLIGHT	28-32°C	85-100%	Stable
10	BLAST	25-30°C	90-95%	Stable

## RECOMMENDATION

### HOPPER MANAGEMENT (Brown Plant Hopper/White Backed Plant Hopper)

- Drain out irrigation water in the field for 3 to 4 days.
- Install yellow sticky for monitoring of plant hoppers.
- Avoid excessive use of nitrogenous fertilizers..
- Apply granular insecticides with last irrigation in those fields where hopper infestation is observed.
- Control the pest without delay when population reaches ETL

### BROWN LEAF SPOT MANAGEMENT

- Avoid water stress before maturity.
- Control the pest with one of the following fungicides;

S#	Common Name	Brand Name	Dose / Acre
1	Propineb 70 WP	Gift, Cover, Protest	800 gm
2	Mancozeb 80 WP	Shelter, Dithane-M	800 gm
3	Propiconazole 25 EC	Tilt	80 ml

### BACTERIAL LEAF BLIGHT MANAGEMENT

- Use disease free seeds for next crop.
- Spray copper based fungicides without delay when disease incidence is observed.

S#	Common Name	Brand Name	Dose / Acre
1	Copper oxychloride	Cobox,clipper	500 gm
2	Copper hydroxide	Kocide, champion	250 gm

3	Kasugamycin + Copper oxychloride 47% WP	Profile	240-400ml
---	---	---------	-----------

### PADDY BLAST MANAGEMENT

- For leaf blast maintain water level at 3 -4 inches to ensure that soil is covered.
- Avoid late use of nitrogenous fertilizers.
- Control the disease with one of the following fungicides

S#	Common Name	Brand Name	Dose / Acre
1	Trifloxystrobin+Tebuconazole 75%WP	Nativo	65 gm
2	Azoxystrobin 25 % SC	Primacy	100 ml
3	Difenoconazole 250 EC	Score	125 ml

### SHEATH BLIGHT MANAGEMENT

- Plant at the optimum time for a specific variety. Avoid extremely early planting.
- Control the disease with one of the following fungicides

S#	Common Name	Brand Name	Dose / Acre
1	Trifloxystrobin+Tebuconazole 75%WP	Nativo	65 gm
2	Azoxystrobin +Difenoconazole	Amistar top, Rekardo	200 ml
3	Hexaconazole	Contaf Plus	400 ml

### ECONOMIC THRESHOLD LEVELS OF RICE PESTS

INSECT PESTS	ECONOMIC THRESHOLD LEVELS
Borers (White, Yellow & Pink)	0.5% attack on rice nursery while 8-10 Moth/Trap/Night & 5% dead heart on rice crop.
Toka	2-3 per net sweep.
Leaf Folder	2 rolled leaves per plant in July-August & 3 rolled leaves per plant in September-October.
Brown Plant Hopper	5 Nymphs or Adults per plant in July-August & 10 Nymphs or Adults per plant in September-October.
White Backed Plant Hopper	10 Nymphs or Adults per plant in July-August & 15 Nymphs or Adults per plant in September-October.
Hispa	1 per plant
Diseases	On appearance