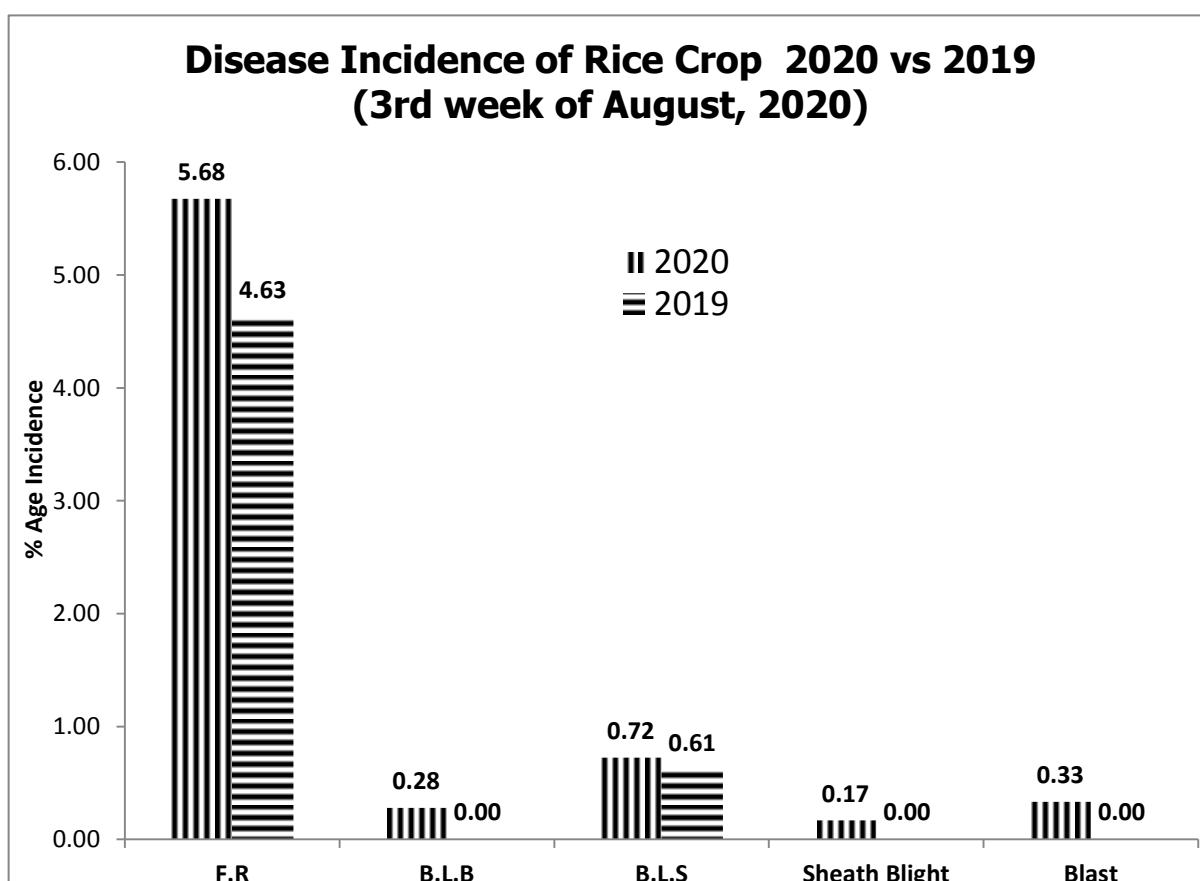
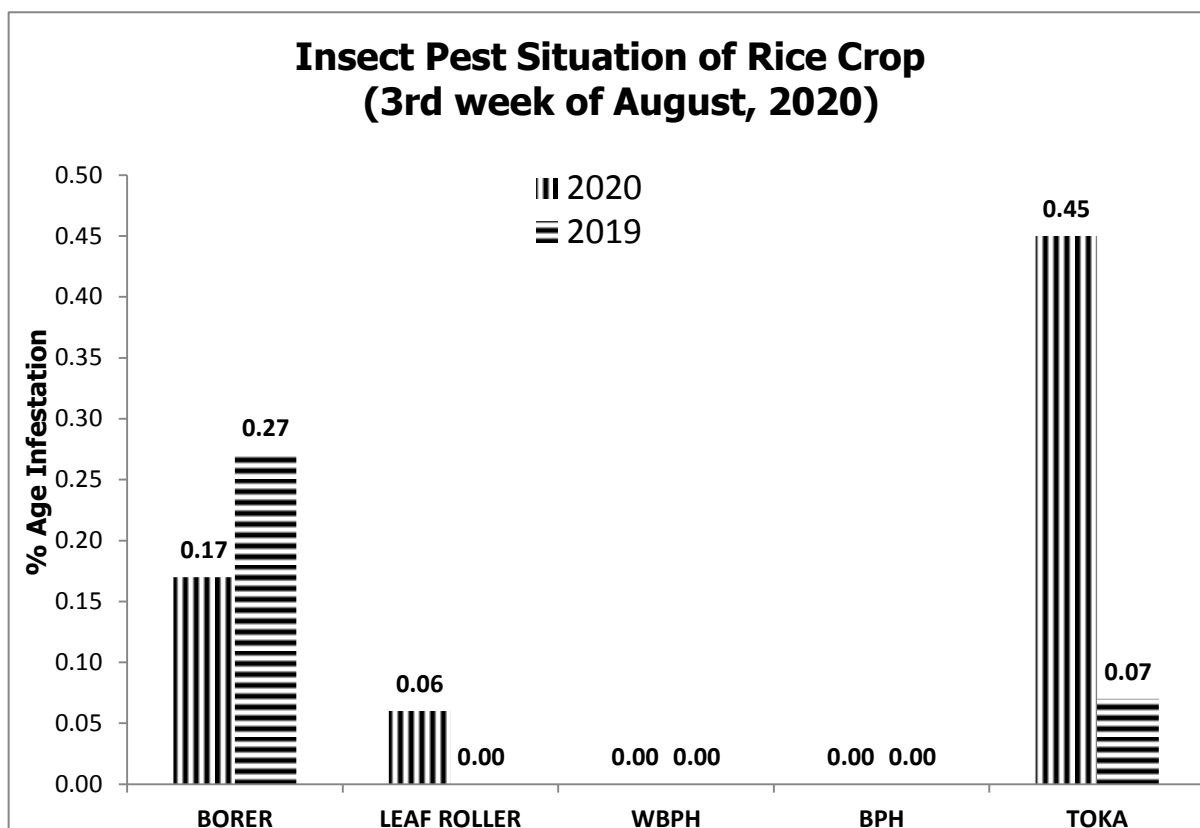


## GRAPHICAL PEST SITUATION ON RICE CROP IN PUNJAB DURING 3RD WEEK OF AUGUST, 2020



## PEST SITUATION ON RICE CROP IN PUNJAB DURING 3RD WEEK OF AUGUST, 2020

Pest Situation of Rice Pests								
Sr. No.	Pest Name	%age of spots						Remarks
		Current Week		Previous Week		Corresponding week of Last Year		
		AETL	BETL	AETL	BETL	AETL	BETL	
1	Rice Borer	0.17	7.12	0.00	5.19	0.27	4.35	Low & Sustaining
2	Leaf Folder	0.06	4.67	0.05	1.71	0.00	2.18	Low & Sustaining
3	WPBH	0.00	0.00	0.00	0.00	0.00	0.00	-
4	BPH	0.00	0.00	0.00	0.00	0.00	0.00	-
5	TOKA	0.45	12.63	0.48	10.16	0.07	7.96	Low & Sustaining
6	FOOT ROT	5.68	-	4.71	-	4.63	-	Medium & Sustaining
7	B.L.B	0.28	-	0.16	-	0.00	-	Low & Sustaining
8	B.L.S	0.72	-	0.48	-	0.61	-	Low & Sustaining
9	SHEAT H BLIGHT	0.17	-	0.00	-	0.00	-	Low & Sustaining
10	BLAST	0.33	-	0.27	-	0.00	-	Low & Sustaining
<b>NO. OF TOTAL SPOTS VISITED</b>		<b>1797</b>						
<b>TOTAL AREA VISITED (Acres)</b>		<b>14948</b>						

### Tehsil wise percentage of hot spots of Rice Borer

Sr#	TEHSIL	%AGE
1	Sahiwal	4.55
2	Minchenabad	2.94
3	Pakpattan	2.38

### Tehsil wise percentage of hot spots of Rice Leaf Folder

Sr#	TEHSIL	%AGE
1	Minchenabad	2.94

### Tehsil wise percentage of hot spots of White-Backed Plant Hopper

No hot spot found.

### Tehsil wise percentage of hot spots of Brown Plant Hopper

No hot spot found.

### Tehsil wise percentage of hot spots of Toka

Sr#	TEHSIL	%AGE
1	Phalia	10.00
2	Lalian	5.00
3	M.B.DIN	3.13
4	Lahore	2.25
5	Sheikhupura	1.64
6	Hafiz Abad	1.45

### Tehsil wise percentage of hot spots of Foot Rot

Sr#	TEHSIL	%AGE
1	Chak Jhumra	25.00
2	Safdarabad	15.63
3	Shakar Garh	14.29
4	Sargodha	14.29
5	Shahpur	14.29
6	Muridke	13.16
7	Jaranwala	12.12
8	Ferozwala	11.11
9	Sahiwal	10.53
10	Phalia	10.00
11	Zafarwal	9.52
12	Pakpattan	9.52
13	Sillanwali	9.09
14	Gujrat	7.41
15	Kamalia	7.14
16	Baddomalhi	6.98
17	Shahkot	6.82
18	Pindi Bhattian	6.67
19	Pasrur	6.45
20	Kasur	6.25
21	Hafizabad	5.80
22	Nankana Sahib	5.71
23	Lahore	5.62
24	Pattoki	5.41
25	Jalal pur Jattan	5.00
26	Malikwal	5.00
27	Lalian	5.00
28	Chunian	4.88
29	Narowal	4.76
30	Pirmahal	4.55
31	Sahiwal	4.55
32	Bhowana	4.17
33	Daska	4.00
34	Wazirabad	3.45
35	Sambrial	3.33
36	Sheikhupura	3.28
37	M.B.Din	3.13
38	Kamoki	2.78
39	Sialkot	2.78
40	Sharqpur	2.50

### Tehsil wise percentage of hot spots of Brown Leaf Spot

Sr#	TEHSIL	%AGE
1	Jalalpur	66.67
2	Multan	22.22
3	Shujabad	20.00

4	Phalia	10.00
5	Minchinabad	8.82
6	Safder Abad	3.13
7	M.B.Din	3.13
8	Ferozwala	2.22

### **Tehsil wise percentage of hot spots of BLB**

<b>Sr#</b>	<b>TEHSIL</b>	<b>%AGE</b>
1	Bhalwal	16.67
2	Bheera	11.11
3	Wazir Abad	3.45
4	Gujranwala	3.13
5	Kamoki	2.78

### **Tehsil wise percentage of hot spots of Sheath Blight**

<b>Sr#</b>	<b>TEHSIL</b>	<b>%AGE</b>
1	Kamoki	5.56
2	Wazirabad	3.45

### **Tehsil wise percentage of hot spots of Blast**

<b>Sr#</b>	<b>TEHSIL</b>	<b>%AGE</b>
1	Kot Chutta	40
2	D.G.Khan	33.33
3	Taunsa	20
4	Alipur	9.09

**FORECAST FOR THE NEXT WEEK****Meteorological data of the current week 2019-2020**

WEEKLY TEMPERATURE DATA FOR WEEK ENDING 3RD WEEK OF AUGUST, 2020 IN RESPECT OF DA MULTAN COTTON ZONE									
SR. NO.	DISTRICT	2020				2019			
		TEMPERATURE		RH.	RAIN FALL	TEMPERATURE		RH.	RAIN FALL
		MAXI.	MINI.	% AGE	(mm)	MAXI.	MINI.	% AGE	(mm)
1	Multan	38.14	32.00	67.26	2.40	35.60	28.60	68.10	0.00
2	Khanewal	39.71	30.71	58.14	0.00	35.71	27.00	62.86	0.00
3	Vehari	38.51	28.29	72.29	7.00	34.50	27.25	70.75	6.00
4	Lodhran	39.71	31.00	69.00	0.00	36.29	28.14	61.86	0.00
5	Sahiwal	37.90	28.75	71.31	20.00	37.22	28.40	70.10	22.00
6	Pakpattan	34.63	28.13	61.75	25.00	39.13	28.13	62.00	0.00
7	Okara	40.00	30.16	76.50	34.00	39.92	28.21	74.12	0.00
8	Bahawalpur	40.63	30.59	60.64	0.00	37.59	28.03	63.00	0.00
9	Bahawalnagar	40.36	26.29	59.57	2.10	38.93	26.29	60.29	0.00
10	R.Y.Khan	39.43	28.14	43.43	0.00	37.79	27.93	76.29	0.00
11	D.G. Khan	41.57	30.71	69.21	0.00	39.71	29.57	67.36	0.00
12	Muzaffar Garh	40.14	30.00	52.93	4.00	36.09	30.17	59.86	0.00
13	Rajapur	42.6	32.3	64.20	0.00	40.30	29.3	65.70	3.00
14	Layyah	39.29	28.71	42.00	0.00	35.71	25.57	47.14	0.00
15	Gujranwala	35.44	23.81	86.61	122.34	33.87	23.32	84.62	98.14
16	Hafizbad	36	28	80	45	35	26.35	52.14	7
17	Sialkot	29	19	85	90.0	32.0	20.0	85.0	70.0
18	Narowal	33.7	23.1	84.6	105.0	35.1	23.3	86.1	10.0
19	Gujrat	35.0	28.0	71.8	119.0	35.6	26.0	64.0	77.0
20	M.B.Din	40	25	55	33.0	40.1	26	50	28.0
21	Lahore	34.25	26.875	70.125	4.0125	34	25	74	1.25
22	Sheikhupura	36.87	27.26	51.51	11	34.16	24.83	61.51	44
23	Ferozwala	37.21	27.71	63.21	8.0	-	-	-	-
24	Nankana	34.9	28.4	61.7	Traces	34.4	26.7	72.5	4.0
25	Kasur	34.43	27.14	79.71	15.43	36.14	30.43	57.86	0.00
26	Jhang	40.5	29.6	56.5		37.3	27.9	62.3	
27	T.T.Singh	39.89	29.36	80.25	0.8	37.53	26.1	82.13	66
<b>AVG/TOTAL</b>		<b>37.77</b>	<b>28.12</b>	<b>66.45</b>	<b>25.92</b>	<b>36.53</b>	<b>26.86</b>	<b>66.98</b>	<b>17.46</b>

<b>Pest Forecast for Next 15 days</b>				
Avg. Temperature for next 15 days = <b>29.9</b>				
Avg. Relative Humidity for next 15 days = <b>39.2</b>				
<b>Sr. No.</b>	<b>Pest Name</b>	<b>Opt. Temperature</b>	<b>%Humidity</b>	<b>Pest Prediction</b>
1	Rice Borer	17-30°C	45-80%	May Sustain
2	Leaf Folder	25-30°C	45-80%	May Sustain
3	WPBH	25-29°C	80-90%	-
4	BPH	28-30°C	>80-90%	-
5	TOKA	24-40°C	30-80%	May Sustain
6	FOOT ROT	30-35°C	<70%	May Sustain
7	B.L.B	25-34°C	<70%	May Sustain
8	B.L.S	16-36°C	86-100%	May Sustain
9	SHEATH BLIGHT	28-32°C	85-100%	May Sustain
10	BLAST	25-30°C	90-95%	May Sustain

## RECOMMENDATION

### HOPPER MANAGEMENT (Brown Plant Hopper/White Backed Plant Hopper)

- Drain out irrigation water in the field for 3 to 4 days.
- Install yellow sticky for monitoring of plant hoppers.
- Avoid excessive use of nitrogenous fertilizers..
- Apply granular insecticides with last irrigation in those fields where hopper infestation is observed.
- Control the pest without delay when population reaches ETL

### BROWN LEAF SPOT MANAGEMENT

- Avoid water stress before maturity.
- Control the pest with one of the following fungicides;

<b>S#</b>	<b>Common Name</b>	<b>Brand Name</b>	<b>Dose / Acre</b>
1	Propineb 70 WP	Gift, Cover, Protest	800 gm
2	Mancozeb 80 WP	Shelter, Dithane-M	800 gm
3	Propiconazole 25 EC	Tilt	80 ml

### BACTERIAL LEAF BLIGHT MANAGEMENT

- Use disease free seeds for next crop.
- Spray copper based fungicides without delay when disease incidence is observed.

<b>S#</b>	<b>Common Name</b>	<b>Brand Name</b>	<b>Dose / Acre</b>
1	Copper oxychloride	Cobox,clipper	500 gm
2	Copper hydroxide	Kocide, champion	250 gm

3	Kasugamycin + Copper oxychloride 47% WP	Profile	240-400ml
---	---	---------	-----------

### PADDY BLAST MANAGEMENT

- For leaf blast maintain water level at 3 -4 inches to ensure that soil is covered.
- Avoid late use of nitrogenous fertilizers.
- Control the disease with one of the following fungicides

S#	Common Name	Brand Name	Dose / Acre
1	Trifloxystrobin+Tebuconazole 75%WP	Nativo	65 gm
2	Azoxystrobin 25 % SC	Primacy	100 ml
3	Difenoconazole 250 EC	Score	125 ml

### SHEATH BLIGHT MANAGEMENT

- Plant at the optimum time for a specific variety. Avoid extremely early planting.
- Control the disease with one of the following fungicides

S#	Common Name	Brand Name	Dose / Acre
1	Trifloxystrobin+Tebuconazole 75%WP	Nativo	65 gm
2	Azoxystrobin +Difenoconazole	Amistar top, Reardo	200 ml
3	Hexaconazole	Contaf Plus	400 ml

### ECONOMIC THRESHOLD LEVELS OF RICE PESTS

INSECT PESTS	ECONOMIC THRESHOLD LEVELS
Borers (White, Yellow & Pink)	0.5% attack on rice nursery while 8-10 Moth/Trap/Night & 5% dead heart on rice crop.
Toka	2-3 per net sweep.
Leaf Folder	2 rolled leaves per plant in July-August & 3 rolled leaves per plant in September-October.
Brown Plant Hopper	5 Nymphs or Adults per plant in July-August & 10 Nymphs or Adults per plant in September-October.
White Backed Plant Hopper	10 Nymphs or Adults per plant in July-August & 15 Nymphs or Adults per plant in September-October.
Hispa	1 per plant
Diseases	On appearance