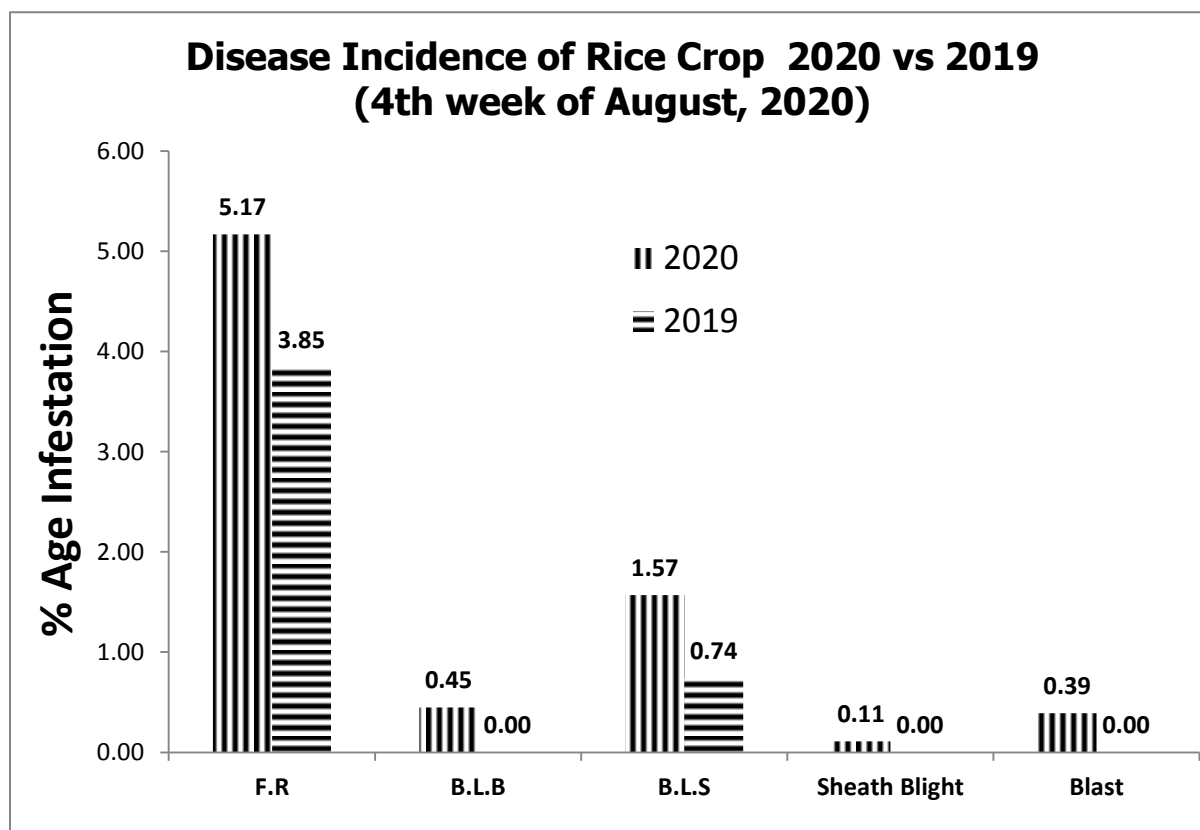
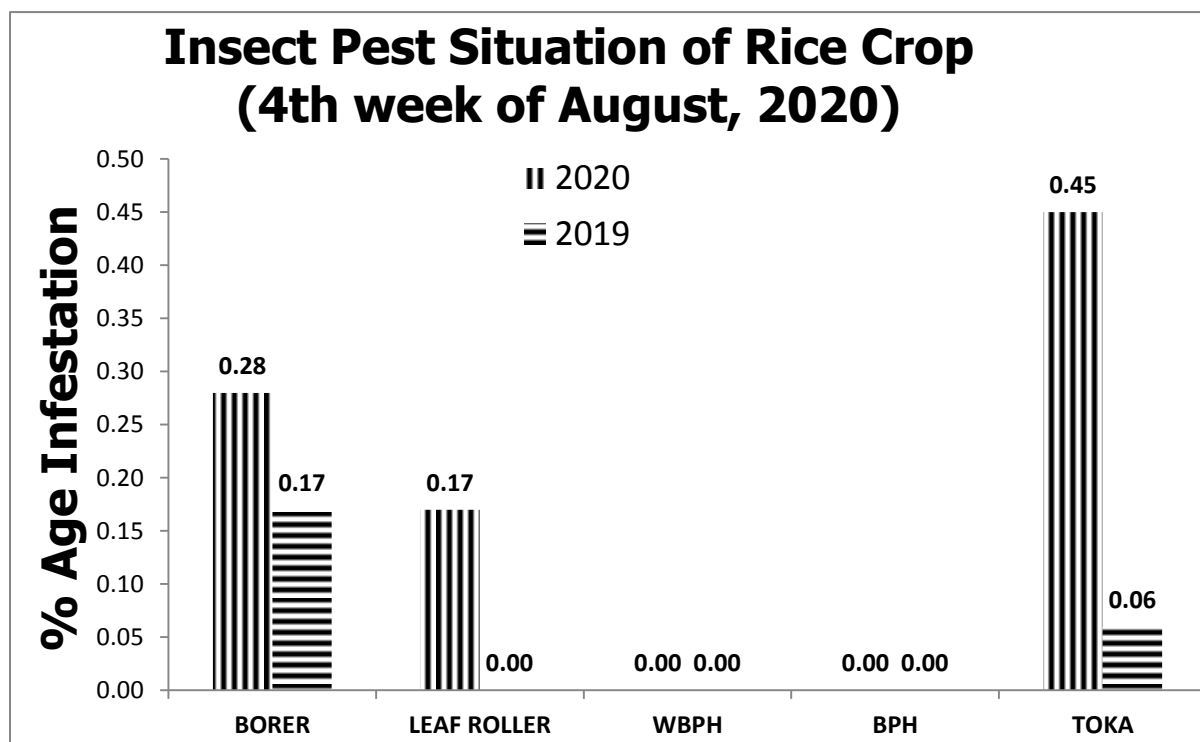


GRAPHICAL PEST SITUATION ON RICE CROP IN PUNJAB DURING 4TH WEEK OF AUGUST, 2020



PEST SITUATION ON RICE CROP IN PUNJAB DURING 3RD WEEK OF AUGUST, 2020

Pest Situation of Rice Pests								
Sr. No.	Pest Name	%age of spots						Remarks
		Current Week		Previous Week		Corresponding week of Last Year		
		AETL	BETL	AETL	BETL	AETL	BETL	
1	Rice Borer	0.28	8.37	0.17	7.12	0.17	4.31	Low & Sustaining
2	Leaf Folder	0.17	8.20	0.06	4.67	0.00	2.15	Low & Sustaining
3	WPBH	0.00	0.00	0.00	0.00	0.00	0.00	-
4	BPH	0.00	0.00	0.00	0.00	0.00	0.00	-
5	TOKA	0.45	15.00	0.45	12.63	0.06	6.92	Sustaining
6	FOOT ROT	5.17	-	5.68	-	3.85	-	Medium & Sustaining
7	B.L.B	0.45	-	0.28	-	0.00	-	Low & Sustaining
8	B.L.S	1.57	-	0.72	-	0.74	-	Low & Sustaining
9	SHEAT H BLIGHT	0.11	-	0.17	-	0.00	-	Low & Sustaining
10	BLAST	0.39	-	0.33	-	0.00	-	Low & sustaining
NO. OF TOTAL SPOTS VISITED		1780						
TOTAL AREA VISITED (Acres)		13994						

Tehsil wise percentage of hot spots of Rice Borer

Sr#	TEHSIL	%AGE
1	Minchenabad	6.89
2	Sahiwal	4.76
3	Pak Pattan	2.5
4	Lahore	1.38

Tehsil wise percentage of hot spots of Rice Leaf Folder

Sr#	TEHSIL	%AGE
1	Shah Pur	9.52
2	Minchanabad	3.45

Tehsil wise percentage of hot spots of White-Backed Plant Hopper

No hot spot found.

Tehsil wise percentage of hot spots of Brown Plant Hopper

No hot spot found.

Tehsil wise percentage of hot spots of Toka

Sr#	TEHSIL	%AGE
1	Safdarabad	5.71
2	Lalian	4.76
3	M.B.Din	4.17
4	Phalia	4.00
5	Chiniot	3.13

6	Lahore	2.78
---	--------	------

Tehsil wise percentage of hot spots of Foot Rot

Sr#	TEHSIL	%AGE
1	Jatoi	33.33
2	Ferozwala	22.22
3	Safdarabad	17.14
4	Sahiwal	16.67
5	Chak Jhumra	13.64
6	Pattoki	11.76
7	Muridke	11.11
8	Pirmahal	10.71
9	Pakpattan	10.00
10	Shahkot	9.52
11	Kasur	9.09
12	Sheikhupura	8.96
13	Nankana Sahib	8.57
14	M.B.Din	8.33
15	Narang Mandi	8.33
16	Pasrur	7.69
17	Gujrat	7.14
18	Kamalia	6.67
19	Jaranwala	6.25
20	Lahore	5.56
21	Hafizabad	5.17
22	Sharqpur	5.13
23	Sambrial	5.00
24	Shahpur	4.76
25	Pindi Bhattian	4.55
26	Malikwal	4.35
27	Phalia	4.00
28	Wazirabad	3.85
29	Bhowana	2.94
30	Kamoki	2.78
31	Shakar Garh	2.50
32	Chunian	2.27

Tehsil wise percentage of hot spots of Brown Leaf Spot

Sr#	TEHSIL	%AGE
1	Minchinabad	20.69
2	Jalal Pur	20.00
3	Shujabad	12.50
4	Malikwal	8.70
5	M.B.Din	8.33
6	Sahiwal	8.33
7	Phalia	8.00
8	Ferozwala	4.44
9	Lahore	4.17
10	Hafizabad	3.45
11	Kamalia	3.33
12	Bhowana	2.94
13	Kamoki	2.78
14	Pindi Bhattian	2.27

Tehsil wise percentage of hot spots of Bacterial Leaf Blight

Sr#	TEHSIL	%AGE
1	Jalal Pur	20.00
2	Gujranwala	5.71
3	Sahiwal	4.76
4	Malikwal	4.35
5	M.B.Din	4.17
6	Kamoki	2.78

Tehsil wise percentage of hot spots of Sheath Blight

Sr#	TEHSIL	%AGE
1	Kamoki	5.56

Tehsil wise percentage of hot spots of Blast

Sr#	TEHSIL	%AGE
1	D.G Khan	40.00
2	Kot Chatta	33.33
3	Ali Pur	14.29
4	Muzzaffer Garh	8.33
5	Sahiwal	4.17

FORECAST FOR THE NEXT WEEK

Meteorological data of the current week 2019-2020

METEOROLOGICAL DATA FOR THE 4TH WEEK AUGUST 2020 RICE ZONE								
Districts	2020				2019			
	Temperature		R.H%	Rainfall (mm)	Temperature		RH%	Rainfall (mm)
	Max.	Min.			Max.	Min.		
Lahore	31.571	27.714	75.143	2.8714	34.571	25.429	68.714	
Sheikhupura	34.2	26	62	120	35.61	27.21	58	
Ferozwala	33.33	26.64	64.92	15.0	36.2	26.7	64.9	
Nankana	33.4	26.3	56.9	25.0	36.6	26.6	70.0	
Kasur	33.1	26.1	67.9	0.9	36.3	29.9	56.3	
Hafizbad	37	29	80	6.0	38.05	29.14	74.06	17.0
Faisalabad	36.1	27.8	71	78.2	37.6	26.5	72	35.2
Jhang	40.5	29.6	56.5	0	37.3	27.9	62.3	0
Toba Tek Singh	38.99	29.67	77.29	56.0	38.0	27.4	79.1	0.0
Nankana	34.9	28.4	61.7	Traces	34.4	26.7	72.5	4.0
Kasur	34.43	27.14	79.71	15.43	36.14	30.43	57.86	0.00
Jhang	40.5	29.6	56.5		37.3	27.9	62.3	
Tt.Singh	39.89	29.36	80.25	0.8	37.53	26.1	82.13	66
Multan	34.7	29.6	82.1	6.2	36.3	27.8	69.3	25
Khanewal	36.2857	27.4286	68	2	38.2857	27.7143	64.2857	0
Vehari	37.2857	27.4286	73.6429	8	36.7143	27.5714	66.8571	6
Lodhran	35.8571	28.4286	75.7857	4	38.1429	28.5714	63	0
Sahiwal	36	27	72	23	37	28	68	0
Pakpattan	33.33	26.5	54.67	26	36.17	28.17	50.67	0
Okara	37.9	27.01	74.33	25	36.26	27.33	74.5	0
Bahawalpur	37.1429	28.6714	60.6429	1.7	38.4429	27.6714	59.7857	0
Bahawalnagar	36.8333	25.4167	68.4167	3.9	38.3333	26.8333	55.6667	0
R.Y.Khan	35	28	43.43	4.1	40.29	27.86	77.71	0
D.G. Khan	38	30.1429	71.1429	5	39.7143	29.2857	62.5	0
Muzaffar Garh	35.3714	27.5571	58.7143	4	35.6857	28.6857	59.1429	0
Rajanpur	44.6	32.2	62.2	2.6	41.5	29.94	65.3	0
Layyah	35.5714	26.7143	42	9	37.14	26.42	53.14	9
TOT/AVG	36.36	27.98	66.55	17.79	37.24	27.77	65.56	7.72

Pest Forecast for Next 15 days				
Avg. Temperature for next 15 days = 29.05 °C				
Avg. Relative Humidity for next 15 days= 40.2%				
Sr. No.	Pest Name	Opt. Temperature	%Humidity	Pest Prediction
1	Rice Borer	17-30°C	45-80%	Low & Sustaining
2	Leaf Folder	25-30°C	45-80%	Low & Sustaining
3	WPBH	25-29°C	80-90%	-
4	BPH	28-30°C	>80-90%	-
5	TOKA	24-40°C	30-80%	Sustaining
6	FOOT ROT	30-35°C	<70%	Medium & Sustaining
7	B.L.B	25-34°C	<70%	Low & Sustaining
8	B.L.S	16-36°C	86-100%	Low & Sustaining
9	SHEATH BLIGHT	28-32°C	85-100%	Low & Sustaining
10	BLAST	25-30°C	90-95%	Low & Sustaining

RECOMMENDATION

HOPPER MANAGEMENT (Brown Plant Hopper/White Backed Plant Hopper)

- Drain out irrigation water in the field for 3 to 4 days.
- Install yellow sticky for monitoring of plant hoppers.
- Avoid excessive use of nitrogenous fertilizers..
- Apply granular insecticides with last irrigation in those fields where hopper infestation is observed.
- Control the pest without delay when population reaches ETL

BROWN LEAF SPOT MANAGEMENT

- Avoid water stress before maturity.
- Control the pest with one of the following fungicides;

S#	Common Name	Brand Name	Dose / Acre
1	Propineb 70 WP	Gift, Cover, Protest	800 gm
2	Mancozeb 80 WP	Shelter, Dithane-M	800 gm
3	Propiconazole 25 EC	Tilt	80 ml

BACTERIAL LEAF BLIGHT MANAGEMENT

- Use disease free seeds for next crop.
- Spray copper based fungicides without delay when disease incidence is observed.

S#	Common Name	Brand Name	Dose / Acre
1	Copper oxychloride	Cobox,clipper	500 gm

2	Copper hydroxide	Kocide, champion	250 gm
3	Kasugamycin + Copper oxychloride 47% WP	Profile	240-400ml

PADDY BLAST MANAGEMENT

- For leaf blast maintain water level at 3 -4 inches to ensure that soil is covered.
- Avoid late use of nitrogenous fertilizers.
- Control the disease with one of the following fungicides

S#	Common Name	Brand Name	Dose / Acre
1	Trifloxystrobin+Tebuconazole 75%WP	Nativo	65 gm
2	Azoxystrobin 25 % SC	Primacy	100 ml
3	Difenoconazole 250 EC	Score	125 ml

SHEATH BLIGHT MANAGEMENT

- Plant at the optimum time for a specific variety. Avoid extremely early planting.
- Control the disease with one of the following fungicides

S#	Common Name	Brand Name	Dose / Acre
1	Trifloxystrobin+Tebuconazole 75%WP	Nativo	65 gm
2	Azoxystrobin +Difenoconazole	Amistar top, Reardo	200 ml
3	Hexaconazole	Contaf Plus	400 ml

ECONOMIC THRESHOLD LEVELS OF RICE PESTS

INSECT PESTS	ECONOMIC THRESHOLD LEVELS
Borers (White, Yellow & Pink)	0.5% attack on rice nursery while 8-10 Moth/Trap/Night & 5% dead heart on rice crop.
Toka	2-3 per net sweep.
Leaf Folder	2 rolled leaves per plant in July-August & 3 rolled leaves per plant in September-October.
Brown Plant Hopper	5 Nymphs or Adults per plant in July-August & 10 Nymphs or Adults per plant in September-October.
White Backed Plant Hopper	10 Nymphs or Adults per plant in July-August & 15 Nymphs or Adults per plant in September-October.
Hispa	1 per plant
Diseases	On appearance