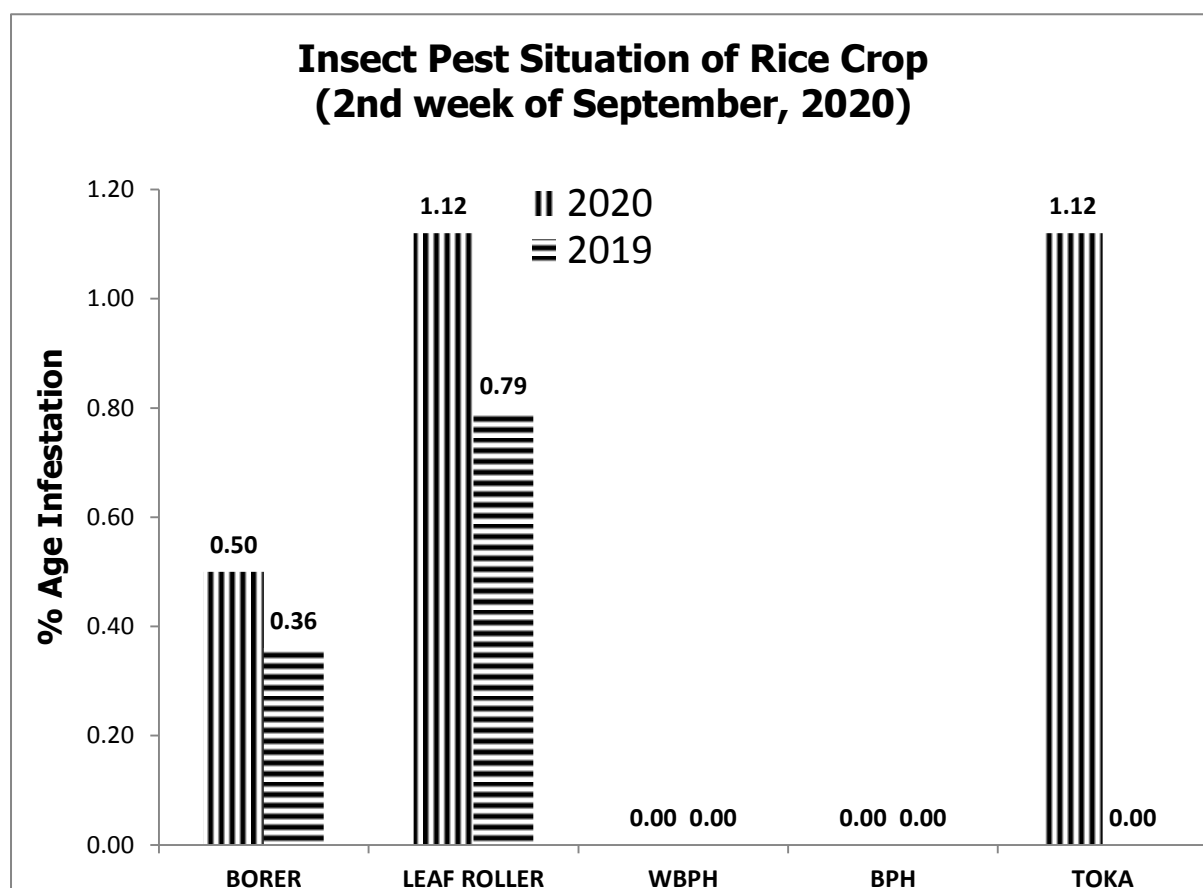
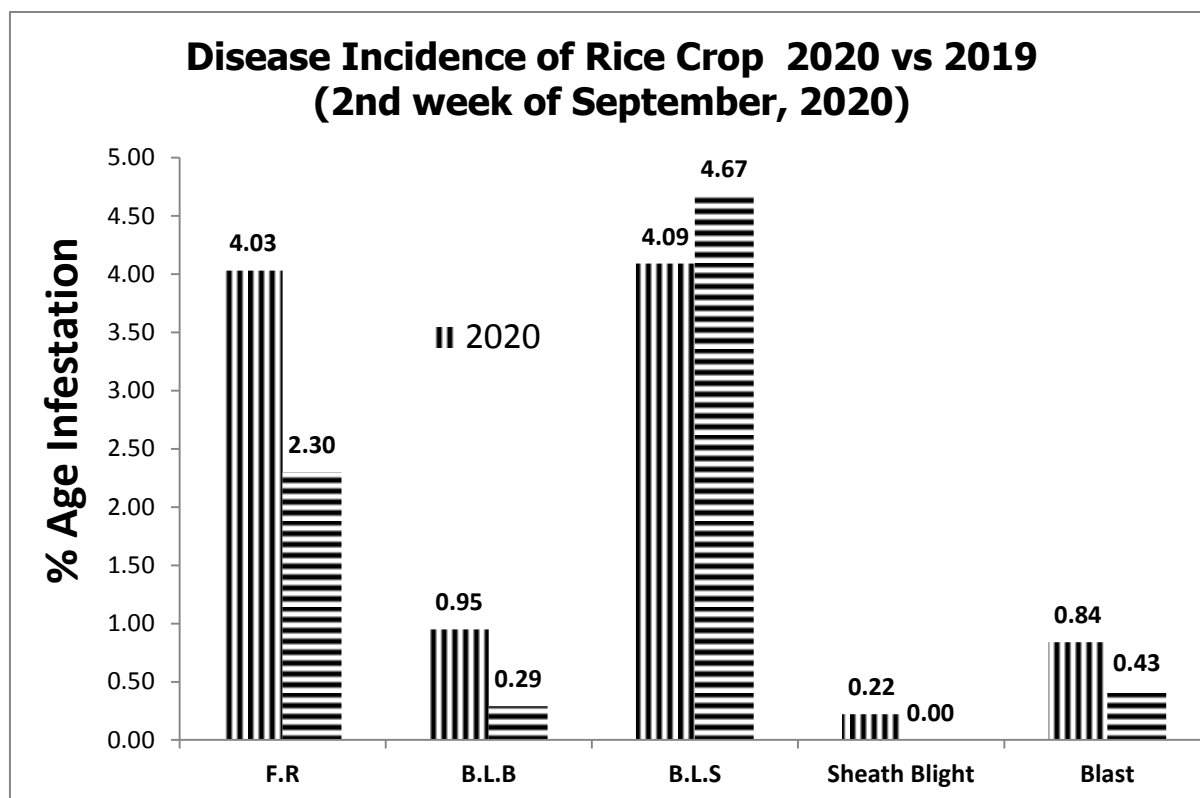


GRAPHICAL PEST SITUATION ON RICE CROP IN PUNJAB DURING 2ND WEEK OF SEPTEMBER, 2020



PEST SITUATION ON RICE CROP IN PUNJAB DURING 2ND WEEK OF SEPTEMBER, 2020

Pest Situation of Rice Pests								
Sr. No.	Pest Name	%age of spots						Remarks
		Current Week		Previous Week		Corresponding week of Last Year		
		AETL	BETL	AETL	BETL	AETL	BETL	
1	Rice Borer	0.50	7.44	0.35	8.09	0.36	9.91	Low
2	Leaf Folder	1.12	11.19	0.29	10.01	0.79	10.91	Increasing
3	WPBH	0.00	0.00	0.00	0.00	0.00	0.00	-
4	BPH	0.00	0.00	0.00	0.00	0.00	0.00	-
5	TOKA	1.12	15.95	0.70	15.13	0.00	10.91	Sustaining
6	FOOT ROT	4.03	-	4.77	-	2.30	-	Sustaining
7	B.L.B	0.95	-	0.76	-	0.29	-	Sustaining
8	B.L.S	4.09	-	2.85	-	4.67	-	Increasing
9	SHEAT H BLIGHT	0.22	-	0.35	-	0.00	-	Sustaining
10	BLAST	0.84	-	0.64	-	0.43	-	Increasing
NO. OF TOTAL SPOTS VISITED		1787						
TOTAL AREA VISITED (Acres)		15236.5						

Tehsil wise percentage of hot spots of Rice Borer

Sr#	TEHSIL	%AGE
1	Minchinabad	11.76
2	Pakpattan	8.33
3	Sahiwal	7.69
4	Pattoki	2.70

Tehsil wise percentage of hot spots of Rice Leaf Folder

Sr#	TEHSIL	%AGE
1	Khanewal	40
2	Mian Channu	33.33
3	D.G Khan	25.00
4	Kot chutta	22.22
5	Jahanain	20.00
6	Kabirwala	20.00
7	Shahpur	16.67
8	Sahiwal	7.69
9	Minchinabad	5.88
10	Daska	3.85
11	Sialkot	2.44
12	Safdarabad	1.64

Tehsil wise percentage of hot spots of White-Backed Plant Hopper

No hot spot found.

Tehsil wise percentage of hot spots of Brown Plant Hopper

No hot spot found.

Tehsil wise percentage of hot spots of Toka

Sr#	TEHSIL	%AGE
1	Gujranwala	10
2	Noshera Virkan	9.52
3	M.B.Din	7.41
4	Muridke	5.88
5	Chiniot	5.88
6	Lalian	5.00
7	Safdarabad	4.92
8	Phalia	4.00
9	Kamoki	2.94
10	Bhowana	2.94
11	Lahore	1.45

Tehsil wise percentage of hot spots of Foot Rot

Sr#	TEHSIL	%AGE
1	Jatoi	38.46
2	Ferozwala	25.00
3	Dunya Pur	25.00
4	Alipur	22.22
5	Kehror Pacca	20.00
6	Shahpur	16.67
7	Depalpur	16.67
8	Vehari	13.33
9	Muridke	11.76
10	Safdarabad	11.48
11	Lodhran	11.11
12	Nankana Sahib	10.81
13	Pirmahal	10.71
14	Narang Mandi	10.00
15	Bhowana	8.82
16	Chak Jhumra	8.70
17	Pakpattan	8.33
18	Kamalia	8.11
19	Burewala	7.14
20	Gujrat	6.45
21	Sahiwal	4.55
22	Shahkot	4.44
23	Sharqpur	4.00
24	Sheikhupura	3.26
25	Kasur	2.44
26	Chunian	2.27

Tehsil wise percentage of hot spots of Brown Leaf Spot

Sr#	TEHSIL	%AGE
1	M.B.Din	40.74
2	Minchinabad	29.41
3	Hafizabad	19.35
4	Sahiwal	18.18
5	Phalia	16.00
6	Shakar Garh	14.71
7	Pindi Bhattian	13.64
8	Malikwal	10.00
9	Nankana Sahib	8.11
10	Kharian	7.69
11	Lahore	7.25
12	Shahkot	6.67
13	Shahpur	5.56
14	Kamalia	5.41
15	Ferozwala	5.00
16	Lalian	5.00
17	Narang Mandi	4.00
18	Sahiwal	3.85
19	Gujrat	3.23
20	Kamoki	2.94
21	Baddomalhi	2.94
22	Chiniot	2.94
23	Bhowana	2.94
24	Safdarabad	1.64

Tehsil wise percentage of hot spots of Brown Leaf Blight

Sr#	TEHSIL	%AGE
1	M.B.Din	18.5
2	Phalia	12.0
3	Hafizabad	9.7
4	Gujranwala	6.7
5	Kamoki	5.9
6	Malikwal	5.0
7	Noshera Virkan	4.8

Tehsil wise percentage of hot spots of Sheath Blight

Sr#	TEHSIL	%AGE
1	Shahpur	5.56
2	Lahore	4.35

Tehsil wise percentage of hot spots of Blast

Sr#	TEHSIL	%AGE
1	D.G Khan	37.50
2	Kot Addu	33.33
3	Kot chutta	33.33

4	Minchinabad	5.88
5	Shahpur	5.56
6	Sahiwal	4.55
7	Gujranwala	3.33
8	Kamoki	2.94
9	Kasur	2.44

FORECAST FOR THE NEXT WEEK

Meteorological data of the current week 2019-2020

METEOROLOGICAL DATA FOR THE 2ND WEEK September 2020 RICE ZONE								
Districts	2020				2019			
	Temperature		R.H%	Rainfall (mm)	Temperature		RH%	Rainfall (mm)
	Max.	Min.			Max.	Min.		
Gujranwala	34.78	24.52	65.84	0	34.91	25.11	66.21	Traces
Hafizbad	42	34	45	30	43.45	36.87	38	0
Sialkot	32	24	72	20.0	35.0	23.0	75.0	64.0
Narowal	31.2	23.3	81.6	35.0	33.9	22.0	84.3	9.0
Gujrat	35.8	25.4	62.0	-	37.1	28.2	67.0	-
M.B.Din	40	24	40	0.0	39.8	24.2	41	1.1
Lahore	34.42	28.42	66.57	4.4	31.71	23.42	54.42	6.95
Sheikhupura	36.3	26.9	48.5		36.5	27.1	52.5	
Ferozwala	33.85	26.42	53.64		30.3	24.7	71.8	10.0
Nankana	36.14	26.86	56.25		37	27.29	66.8	
Kasur	33.57	25.42	63.14	1.428	38.71	30.85	62.42	0.57
Faisalabad	32.5	24.7	0.79	32.9	34.5	28	0.72	18.7
Jhang	36.6	26.2	62.3	0	38.9	29.1	53.8	0
T.T. Singh	36.31	25.81	85.13	0	39.53	28.36	79.86	0
Multan	37.25	27.75	73.68	0	39.16	30.66	77.5	0
Khanewal	38.57	27.71	62.71	0	39.7	29	62.28	0
Vehari	36.7	26.7	69.3	0	39.3	30	69.21	0
Lodhran	36.85	27.57	70	0	39.4	31.28	60.21	0
Sahiwal	34	26	78	0	35	26.96	74	0
Pakpattan	36.33	27.17	57.67	0	36.83	28.83	53	0
Okara	38.5	24.5	75	0	41.5	32	86	0
Bahawalpur	38.11	27.38	61	0	40.21	29.5	60.071	0
Bahawalnagar	37.35	26.35	62.35	2.28	40.28	28.92	58.5	0
R.Y.Khan	32.13	25.38	44.63	0	40.29	27.86	77.71	0
D.G. Khan	40.85	28.85	71.35	0	41.42	28.85	55.5	0
Muzaffar Garh	33.60	26.60	46.64	0.00	38.38	29.28	48.21	0.00
Rajanpur	45.4	30.2	63.1	0	45.4	30.3	64.2	0
Layyah	37.71	24.57	68.57	0	38.71	26.85	43.14	0
TOT/AVG	36.39	26.53	60.96	5.25	38.10	28.16	60.71	4.60

Pest Forecast for Next 15 days				
Avg. Temperature for next 15 days = 31.53 °C				
Avg. Relative Humidity for next 15 days= 24.67%				
Sr. No.	Pest Name	Opt. Temperature	%Humidity	Pest Prediction
1	Rice Borer	17-30°C	45-80%	Low in Infestation
2	Leaf Folder	25-30°C	45-80%	May Increase
3	WPBH	25-29°C	80-90%	-
4	BPH	28-30°C	>80-90%	-
5	TOKA	24-40°C	30-80%	May Sustain
6	FOOT ROT	30-35°C	<70%	May Sustain
7	B.L.B	25-34°C	<70%	May Sustain
8	B.L.S	16-36°C	86-100%	May Increase
9	SHEAT H BLIGHT	28-32°C	85-100%	May Sustain
10	BLAST	25-30°C	90-95%	May Increase

RECOMMENDATION

HOPPER MANAGEMENT (Brown Plant Hopper/White Backed Plant Hopper)

- Drain out irrigation water in the field for 3 to 4 days.
- Install yellow sticky for monitoring of plant hoppers.
- Avoid excessive use of nitrogenous fertilizers..
- Apply granular insecticides with last irrigation in those fields where hopper infestation is observed.
- Control the pest without delay when population reaches ETL

BROWN LEAF SPOT MANAGEMENT

- Avoid water stress before maturity.
- Control the pest with one of the following fungicides;

S#	Common Name	Brand Name	Dose / Acre
1	Propineb 70 WP	Gift, Cover, Protest	800 gm
2	Mancozeb 80 WP	Shelter, Dithane-M	800 gm
3	Propiconazole 25 EC	Tilt	80 ml

BACTERIAL LEAF BLIGHT MANAGEMENT

- Use disease free seeds for next crop.
- Spray copper based fungicides without delay when disease incidence is observed.

S#	Common Name	Brand Name	Dose / Acre
1	Copper oxychloride	Cobox,clipper	500 gm
2	Copper hydroxide	Kocide, champion	250 gm
3	Kasugamycin + Copper oxychloride 47% WP	Profile	240-400ml

PADDY BLAST MANAGEMENT

- For leaf blast maintain water level at 3 -4 inches to ensure that soil is covered.
- Avoid late use of nitrogenous fertilizers.
- Control the disease with one of the following fungicides

S#	Common Name	Brand Name	Dose / Acre
1	Trifloxystrobin+Tebuconazole 75%WP	Nativo	65 gm
2	Azoxystrobin 25 % SC	Primacy	100 ml
3	Difenoconazole 250 EC	Score	125 ml

SHEATH BLIGHT MANAGEMENT

- Plant at the optimum time for a specific variety. Avoid extremely early planting.
- Control the disease with one of the following fungicides

S#	Common Name	Brand Name	Dose / Acre
1	Trifloxystrobin+Tebuconazole 75%WP	Nativo	65 gm
2	Azoxystrobin +Difenoconazole	Amistar top, Reardo	200 ml
3	Hexaconazole	Contaf Plus	400 ml

ECONOMIC THRESHOLD LEVELS OF RICE PESTS

INSECT PESTS	ECONOMIC THRESHOLD LEVELS
Borers (White, Yellow & Pink)	0.5% attack on rice nursery while 8-10 Moth/Trap/Night & 5% dead heart on rice crop.
Toka	2-3 per net sweep.
Leaf Folder	2 rolled leaves per plant in July-August & 3 rolled leaves per plant in September-October.
Brown Plant Hopper	5 Nymphs or Adults per plant in July-August & 10 Nymphs or Adults per plant in September-October.
White Backed Plant Hopper	10 Nymphs or Adults per plant in July-August & 15 Nymphs or Adults per plant in September-October.
Hispa	1 per plant
Diseases	On appearance