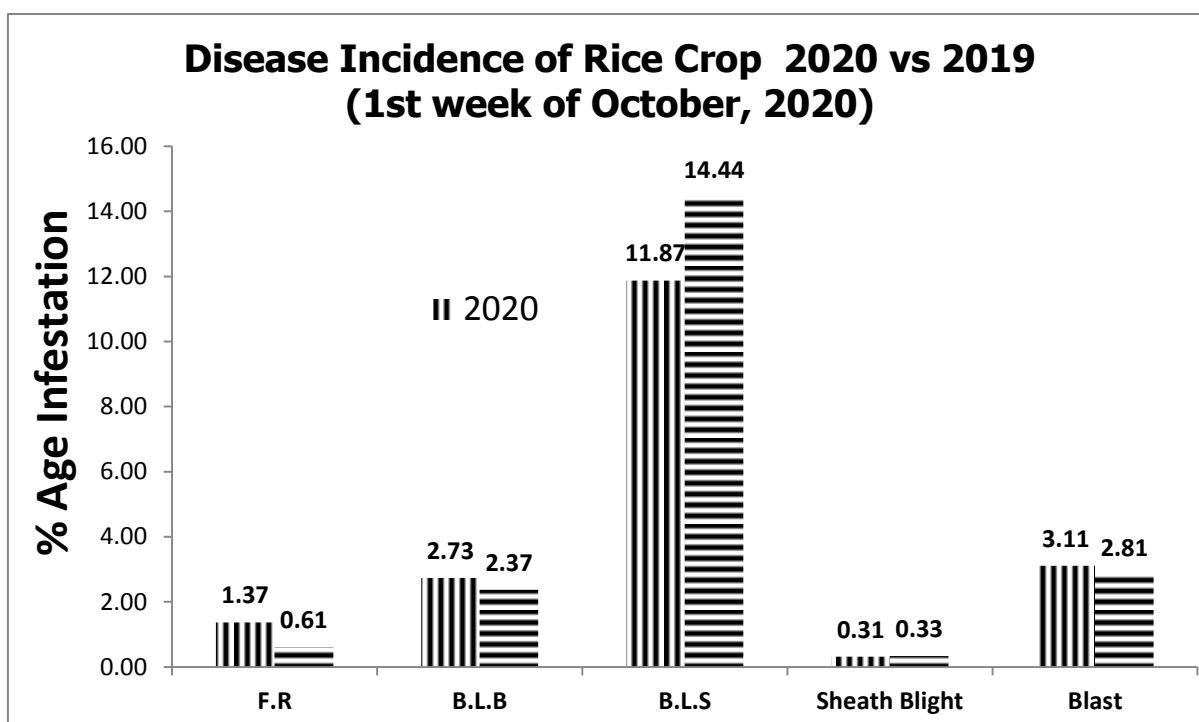
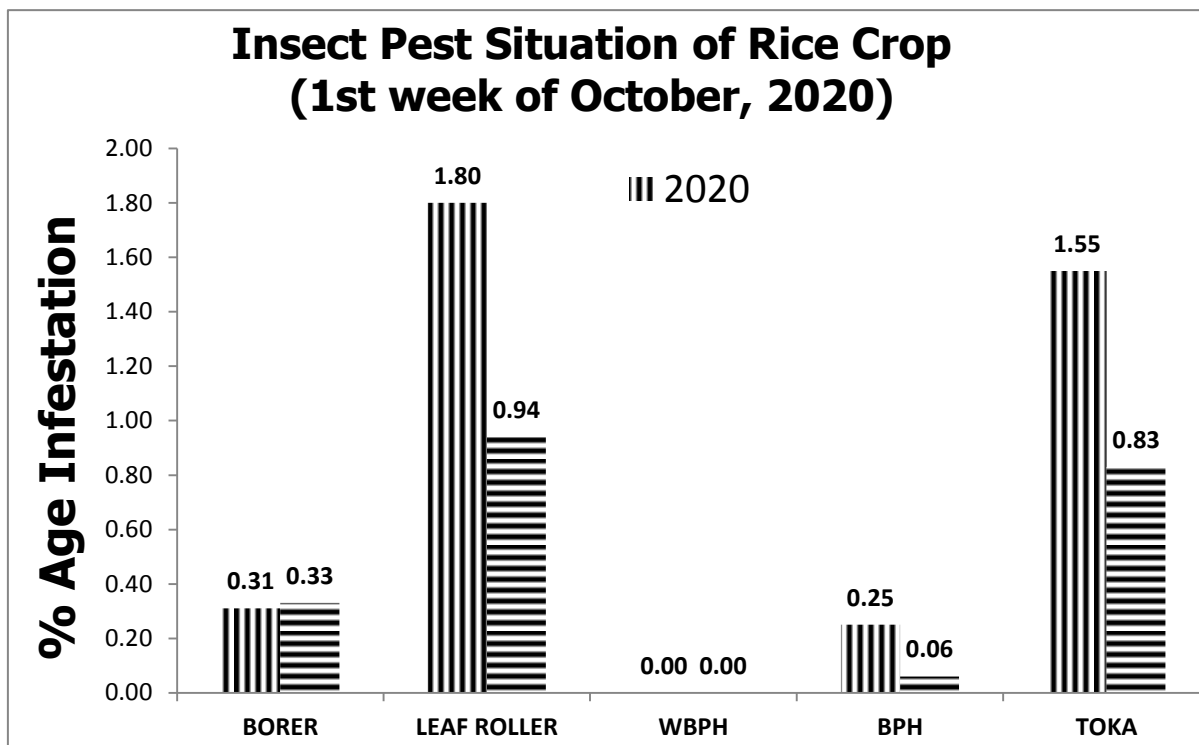


GRAPHICAL PEST SITUATION ON RICE CROP IN PUNJAB DURING 1ST WEEK OF OCTOBER, 2020



PEST SITUATION ON RICE CROP IN PUNJAB DURING 1ST WEEK OF OCTOBER, 2020

Pest Situation of Rice Pests								
Sr. No.	Pest Name	Percentage of spots						Remarks
		Current Week		Previous Week		Corresponding week of Last Year		
		AETL	BETL	AETL	BETL	AETL	BETL	
1	RICE BORER	0.31	8.57	0.22	9.90	0.33	8.32	Sustaining
2	LEAF FOLDER	1.80	14.17	2.88	18.82	0.94	10.25	Decreasing
3	WPBH	0.00	0.99	0.00	0.22	0.00	0.55	Low
4	BPH	0.25	2.11	0.00	1.20	0.06	3.14	Increasing
5	TOKA	1.55	19.20	0.87	17.90	0.83	12.18	Increasing
6	FOOT ROT	1.37	-	2.56	-	0.61	-	Decreasing
7	B.L.B	2.73	-	1.96	-	2.37	-	Increasing
8	B.L.S	11.87	-	8.92	-	14.44	-	Increasing
9	SHEATH BLIGHT	0.31	-	0.44	-	0.33	-	Low
10	BLAST	3.11	-	2.07	-	2.81	-	Increasing
NO. OF TOTAL SPOTS VISITED		1609						
TOTAL AREA VISITED (Acres)		11654						

Tehsil wise percentage of hot spots of Rice Borer

Sr.	TEHSIL	%AGE	Sr.	TEHSIL	%AGE
1	Bahawalpur	16.7	2	Minchinabad	6.90

Tehsil wise percentage of hot spots of Rice Leaf Folder

Sr.	TEHSIL	%AGE	Sr.	TEHSIL	%AGE
1	Khanewal	50	10	D.G Khan	14.3
2	Layyah	40	11	Bahawalpur	11.1
3	Karor	40	12	Phalia	8.7
4	Kot chutta	33	13	Shahpur	8.3
5	Jatoi	22	14	Muridke	7.3
6	Jahanain	20	15	M.B.Din	6.7
7	Kabirwala	20	16	Safdarabad	5.5
8	Mian Channu	20	17	Malikwal	5.3
9	Lodhran	17	18	Minchinabad	3.4

Tehsil wise percentage of hot spots of White-Backed Plant Hopper

No hot spot found.

Tehsil wise percentage of hot spots of Brown Plant Hopper

Sr.	TEHSIL	%AGE	Sr.	TEHSIL	%AGE
1	Chunian	4.3	3	Pattoki	2.7
2	Pattoki	2.7			

Tehsil wise percentage of hot spots of Rice Toka

Sr.	TEHSIL	%AGE	Sr.	TEHSIL	%AGE
1	Phalia	13.0	7	Jaranwala	4
2	Safdarabad	10.9	8	M.B.Din	3
3	Khushab	10.5	9	Lahore	3
4	Sheikhupura	7	10	Nankana Sahib	2.9
5	Malikwal	5	11	Narang Mandi	2.6
6	Muridke	5			

Tehsil wise percentage of hot spots of Foot Rot

Sr.	TEHSIL	%AGE	Sr.	TEHSIL	%AGE
1	Dunya Pur	50.0	6	Ferozwala	11
2	Kot Addu	40.0	7	Kharian	6
3	Shahpur	16.7	8	Nankana Sahib	6
4	Pirmahal	12	9	Kamalia	5
5	Silanwali	11	10	Chunian	2.1

Tehsil wise percentage of hot spots of Bacterial Leaf Blight

Sr.	TEHSIL	%AGE	Sr.	TEHSIL	%AGE
1	Jalal Pur	67	13	Sahiwal	7
2	Mailsi	40	14	Hafizabad	7
3	Noshehra Virkan	21.4	15	Jalal pur Jattan	7
4	Burewala	20	16	M.B.Din	7
5	Zafarwal	18	17	Kharian	6.3
6	Bhera	14	18	Sambrial	5.3
7	Kamoki	12	19	Daska	5.3
8	Malikwal	11	20	Pindi Bhatian	4.0
9	Gujrat	10	21	Gujranwala	3.0
10	Pasrur	8.7	22	Nankana Sahib	2.9
11	Phalia	8.7	23	Pattoki	2.7
12	Sialkot	8	24	Lahore	1.5

District wise percentage of hot spots of Brown Leaf Spots

Sr.	TEHSIL	%AGE	Sr.	TEHSIL	%AGE
1	Kehror Pacca	100	23	Silanwali	13.3
2	Rajanpur	48	24	Pirmahal	13.0
3	Bhowana	45.5	25	Malikwal	12.5
4	Kamoki	33	26	Pindi Bhatian	12.3
5	Bhera	33	27	A.P.Sial	11.8
6	Lalian	32	28	Baddomalhi	11.4
7	Chunian	31	29	Kot Addu	10.5
8	Bahawalnagar	28	30	Sambrial	9.1
9	Jampur	28	31	Gujrat	8.5
10	Gujranwala	26.7	32	Dunya Pur	8.0
11	Kamalia	24.1	33	Narang Mandi	7.7
12	Noshehra Virkan	21.7	34	Kharian	7.5
13	Hafizabad	21.1	35	Pasrur	7.3
14	Zafarwal	21.1	36	Lahore	7.1
15	Nankana Sahib	20.0	37	Mailsi	7.1
16	Sheikhupura	17.2	38	Burewala	7.1
17	Wazirabad	16.7	39	Kot Radha Kishan	6.1
18	Sangla Hill	16.0	40	M.B.Din	5.4
19	Sharqpur	15.6	41	Shahpur	5.3
20	Ferozwala	14.3	42	Daska	4.8
21	Safdarabad	13.6	43	Muridke	4.3
22	Sialkot	13.4			

Tehsil wise percentage of hot spots of Sheath Blight

Sr.	TEHSIL	%AGE	Sr.	TEHSIL	%AGE
1	Bhera	14	3	Gujranwala	3.0
2	Sahiwal	9	4	Kamoki	3

Tehsil wise percentage of hot spots of Rice Blast

Sr.	TEHSIL	%AGE	Sr.	TEHSIL	%AGE
1	Sahiwal	45	14	Khushab	10.5
2	Karor	40	15	Kasur	10.3
3	Kot chutta	33.3	16	Pasrur	8.7
4	D.G Khan	29	17	Sialkot	8.0
5	Vehari	20	18	Zafarwal	7.1
6	Burewala	20	19	Pakpattan	7.1
7	Muzaffargarh	20	20	Minchinabad	6.9
8	Taunsa	20	21	Sambrial	5.3
9	Sargodha	14	22	Shakar Garh	5.0
10	Bhera	14.3	23	Phalia	4.3
11	Silanwali	11.1	24	Sahiwal	3.6
12	Jatoi	11.1	25	Kamoki	2.9

13	Daska	10.5	26	Nankana Sahib	2.9
14	Khushab	10.5	27	Kamalia	2.6
15	Kasur	10.3	28	Chunian	2.1

Meteorological data of the current week 2020-2021

METEOROLOGICAL DATA FOR THE 1ST WEEK OF OCTOBER, 2020 RICE ZONE								
Districts	2020				2019			
	Temperature		R.H%	Rainfall (mm)	Temperature		RH%	Rainfall (mm)
	Max.	Min.			Max.	Min.		
Gujranwala	36.4	24.5	55.2	0	34.33	22.5	66.5	10
Hafizbad	38	19	60	0	34	20.6	69.34	13
Sialkot	30	21	70	98	29	19	72	120
Narowal	33	21	83	11	35	23	83	0
Gujrat	36.4	24	64.73	0	30.2	20	79	52
M.B.Din	35	19	39	0	35	19	39	0
Lahore	36	26	55	0	34	24	65	0
Sheikhupura	38	28	46	0	37	25	52	0
Ferozwala	37	25	35	0	37	25	52	0
Nankana	37	26	58	0	34	21	50	0
Kasur	38	25	44	0	34	26	49	0
Faisalabad	36.3	22.2	64.3	0	36	21.5	65.2	15
Jhang	36	28	54	0	32	22	65	5
Toba Tek Singh	37	22	78	0	33	22	88	54
Multan	36	22	71	0	34	26	81	28
Khanewal	37	22	61	0	35	26	78	2
Vehari	35	22	70	0	33	25	71	18
Lodhran	36	23	64	0	34	25	73	17
Sahiwal	36	21	61	0	38	24	58	0
Pakpattan	35	24	54	0	37	25	54	0
Okara	37	24	77	0	36	25	76	0
Bahawalpur	37	22	54	0	33	23	70	5
Bahawalnagar	38	22	56	0	40	29	56	0
R.Y.Khan	40	27	47	0	37	24	80	0
D.G. Khan	38	24	51	0	34	24	63	27
Muzaffar Garh	37	22	51	0	32	24	34	16
Rajanpur	40	22	62	0	36	20	65	0
Layyah	35	21	46	0	31	20	79	52
TOT/AVG	36.45	23.17	58.23	3.89	34.40	23.27	65.43	15.51

Pest Forecast for Next 15 days

Avg. Temperature for next 15 days = **29.53 °C**

Avg. Relative Humidity for next 15 days = **20.27%**

Sr. No.	Pest Name	Opt. Temperature	%Humidity	Pest Prediction
1	Rice Borer	17-30°C	45-80%	May Sustain
2	Leaf Folder	25-30°C	45-80%	May Decrease
3	WPBH	25-29°C	80-90%	May be Low
4	BPH	28-30°C	>80-90%	May Increase
5	TOKA	24-40°C	30-80%	May Increase
6	FOOT ROT	30-35°C	<70%	May Decrease
7	B.L.B	25-34°C	<70%	May Increase
8	B.L.S	16-36°C	86-100%	May Increase
9	SHEATH BLIGHT	28-32°C	85-100%	May be Low
10	BLAST	25-30°C	90-95%	May Increase

RECOMMENDATION

RICE BORER MANAGEMENT

- Use resistant varieties.
- Discard the infested plants while transplanting.
- Ensure proper timing of planting and synchronous planting, harvest crops at ground level to remove the larvae in stubble, remove stubble and volunteer rice, plow and flood the field.
- At seedbed and transplanting, handpick and destroy egg masses.
- Raise level of irrigation water periodically to submerge the eggs deposited on the lower parts of the plant.
- Clipp off the tips of the seedlings at the time of transplanting because the eggs of yellow and white stem borers are laid near the tip of the leaf blade. It will reduce a considerable number of egg masses and young larvae of the stem borers.
- Install light traps up to September to monitor moth population of stem borers.
- Use balanced Fertilizers (NPK) within 45 days after transplanting of nursery.
- Complete application of urea up to 31st August because due to late application of Urea, the plant becomes succulent and dark-green which attracts the insects, especially stem borers and leaf roller and helps in their rapid multiplication.

BROWN LEAF SPOT MANAGEMENT

- Use resistant varieties.
- Contact your local agriculture office for an up-to-date list of available varieties.
- Follow rice with a different crop, or fallow period.
- Avoid ratooning.
- Flood and plow field after harvesting if possible.
- Remove grassy weeds from fields and borders.
- Reduce density of planting.

FOOT ROT SPOT MANAGEMENT

- Avoid sowing of seed obtained from infected crop.
- Uproot the diseased plants and destroy them.
- Use Potash 1 Bag within 14 days.

BROWN LEAF SPOT MANAGEMENT

- Control the pest with one of the following pesticides

S#	Common Name	Brand Name	Dose / Acre
1	Propineb 70 WP	Gift, Cover, Protest	800 gm
2	Mancozeb 80 WP	Shelter, Dithane-M	800 gm
3	Propiconazole 25 EC	Tilt	80 ml

BACTERIAL LEAF BLIGHT MANAGEMENT

- Use disease free seeds for next crop.
- Spray copper based fungicides.

PADDY BLAST MANAGEMENT

- For leaf blast, relood if field has been drained. Maintain water level at 3-4 inches to ensure that soil is covered.
- Control the pest with one of the following pesticides

S#	Common Name	Brand Name	Dose / Acre
1	Kasugamycin 6% WP	Fork	250 gm
2	Trifloxystrobin+Tebuconazole 75%WP	Nativo	65 gm
3	Azoxystrobin 25 % SC	Primacy	200 ml
4	Difenoconazole 250 EC	Score	125 ml

ECONOMIC THRESHOLD LEVELS OF RICE PESTS

INSECT PESTS	ECONOMIC THRESHOLD LEVELS
Borers (White, Yellow & Pink)	0.5% attack on rice nursery while 8-10 Moth/Trap/Night & 5% dead heart on rice crop.
Toka	3 per net on rice nursery & 5 on rice crop.
Leaf Folder	2 rolled leaves per plant in July-August & 3 rolled leaves per plant in September-October.
Brown Plant Hopper	15 Nymphs or Adults per plant in July-August & 20 Nymphs or Adults per plant in September-October. Or 7-10 Nymphs or Adults per net
White Backed Plant Hopper	15 Nymphs or Adults per plant in July-August & 20 Nymphs or Adults per plant in September-October. Or 7-10 Nymphs or Adults per net
Hispa	1 per plant
Diseases	On appearance