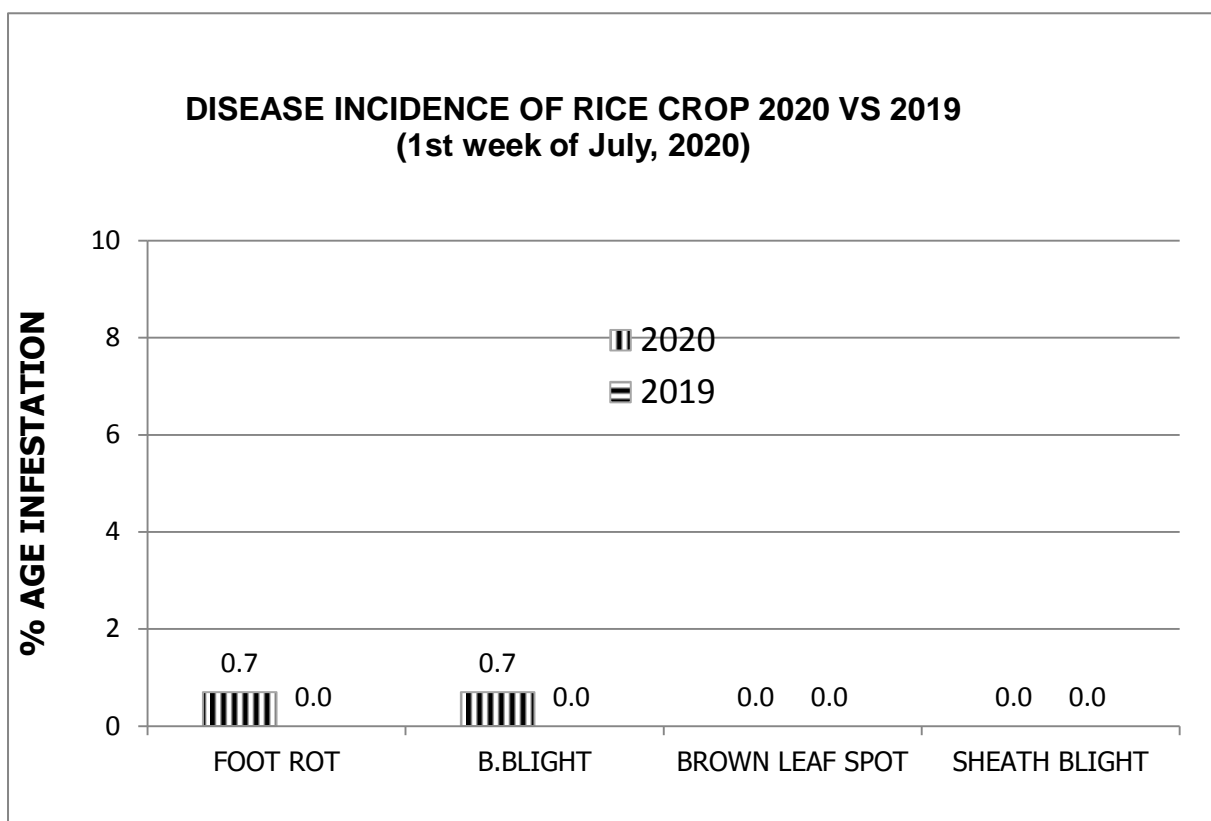
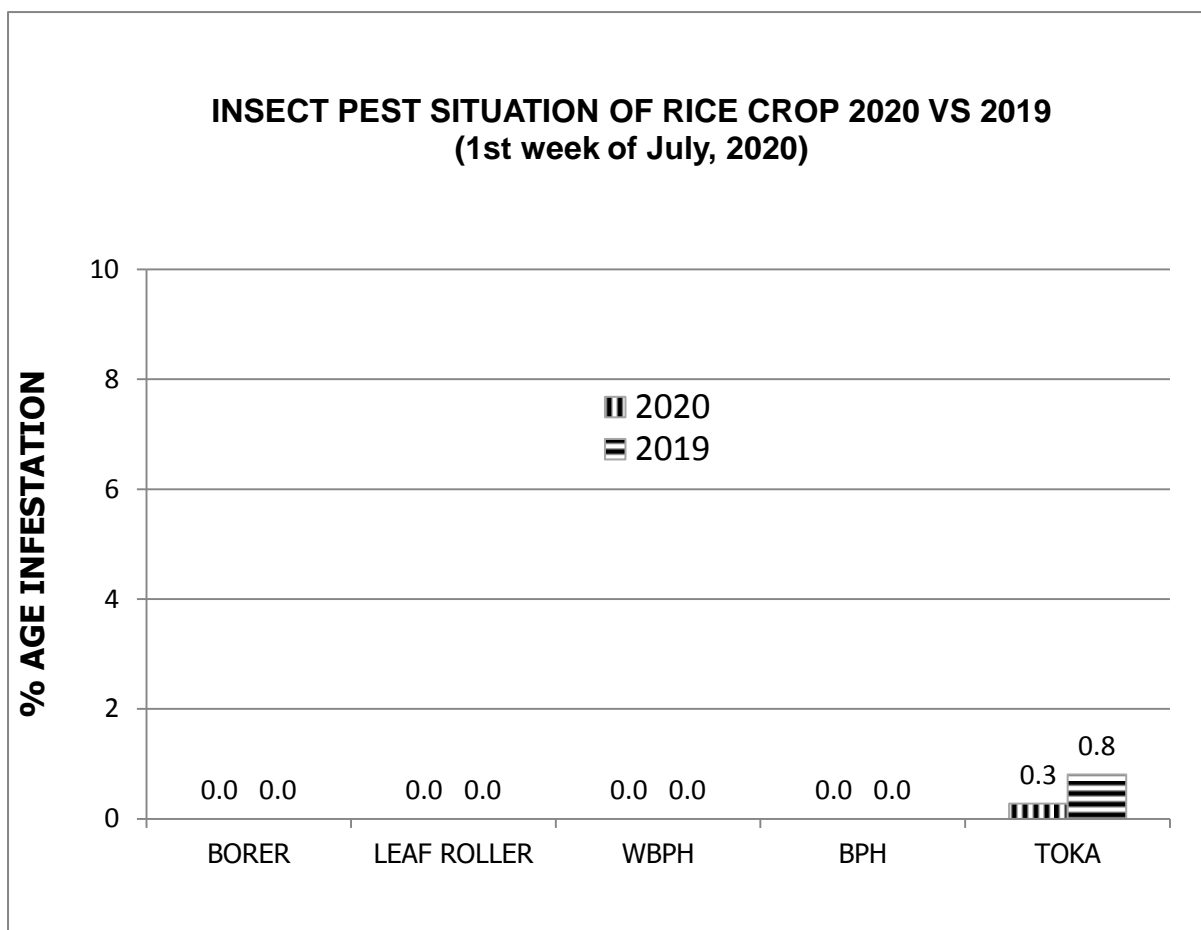


## GRAPHICAL PEST SITUATION ON RICE CROP IN PUNJAB DURING 1<sup>ST</sup> WEEK OF JULY, 2020



## PEST SITUATION ON RICE CROP IN PUNJAB DURING 1<sup>ST</sup> WEEK OF JULY, 2020

Pest Situation of Rice Pests								
Sr. No.	Pest Name	%age of spots						Remarks
		Current Week		Previous Week		Corresponding week of Last Year		
		AETL	BETL	AETL	BETL	AETL	BETL	
1	Rice Borer	0.00	0.00	0.21	1.68	0.84	2.10	Decreasing
2	Leaf Folder	0.00	0.00	0.00	0.21	0.70	0.00	Decreasing
3	WPBH	0.00	0.00	0.00	0.00	0.28	0.00	-
4	BPH	0.00	0.00	0.00	0.00	0.00	0.00	-
5	TOKA	0.28	0.81	0.42	6.74	9.79	5.66	Decreasing
6	FOOT ROT	0.70	-	0.63	-	0.00	-	Increasing
7	B.L.B	0.70	-	0.00	-	0.00	-	Increasing
8	B.L.S	0.00	-	0.00	-	0.00	-	-
9	SHEATH BLIGHT	0.00	-	0.00	-	0.32	-	-
10	BLAST	0.00	-	0.00	-	0.00	-	-
<b>NO. OF TOTAL SPOTS VISITED</b>		<b>715</b>						
<b>TOTAL AREA VISITED (Acres)</b>		<b>5767</b>						

### Tehsil wise percentage of hot spots of Rice Borer

No hot spot found.

### Tehsil wise percentage of hot spots of Rice Leaf Folder

No hot spot found.

### Tehsil wise percentage of hot spots of White-Backed Plant Hopper

No hot spot found.

### Tehsil wise percentage of hot spots of Brown Plant Hopper

No hot spot found.

### Tehsil wise percentage of hot spots of Toka

Sr#	TEHSIL	%AGE
1	SHEIKHUPURA	11.76

### Tehsil wise percentage of hot spots of Foot Rot

Sr#	TEHSIL	%AGE
1	GUJRANWALA	5.71
2	PHALIA	20.0
3	SHEIKHUPURA	11.76

### Tehsil wise percentage of hot spots of Bacterial Leaf Blight

Sr#	TEHSIL	%AGE
1	MINCHINABAD	11.11
2	KHUSHAB	14.29

### Tehsil wise percentage of hot spots of Bacterial Leaf Spot

No hot spot found.

### Tehsil wise percentage of hot spots of Sheath Blight

No hot spot found.

### Tehsil wise percentage of hot spots of Blast

No hot spot found.

## FORECAST FOR THE NEXT WEEK

### Meteorological data of the current week 2019-2020

METEOROLOGICAL DATA FOR THE 2ND WEEK JUNE 2020 RICE ZONE								
Districts	2019				2018			
	Temperature		R.H%	Rainfall (mm)	Temperature		RH%	Rainfall (mm)
	Max.	Min.			Max.	Min.		
Gujranwala	43.31	35.98	37.84	0	36.54	27.04	54.11	99
Hafizabad	43.45	36.87	38	0	36.75	27.12	55	107
Sialkot	47.05	31.8	39.62	0.0	40.5	30.5	50.2	0.0
Narowal	40.1	26.0	53.8	31.0	34.9	24.4	79.9	14.2
Gujrat	40.0	24.0	0.4	3.0	45.0	32.0	0.1	0.0
M.B.Din	42	20	38	4.0	43.5	22	34	1.0
Faisalabad	41.1	24.8	55.3	4.1	32.1	25	79.1	86
Jhang	40.3	28.4	48.1	31.0	40.8	27.5	49.5	15
Toba Tek Singh	42.28	29.3	62.71	0	33.68	25.1	84.6	34.3
Sargodha	44.83	31	27	0.0	43	30	31	0.0
<b>TOT/AVG</b>	<b>42.44</b>	<b>28.82</b>	<b>40.08</b>	<b>7.31</b>	<b>38.67</b>	<b>27.07</b>	<b>51.76</b>	<b>35.65</b>

Pest Forecast for Next 15 days				
Avg. Temperature for next 15 days = <b>36.63</b>				
Avg. Relative Humidity for next 15 days = <b>28.1%</b>				
Sr. No.	Pest Name	Opt. Temperature	%Humidity	Pest Prediction
1	Rice Borer	17-30°C	45-80%	Infestation may decrease
2	Leaf Folder	25-30°C	45-80%	Infestation may decrease
3	WPBH	25-29°C	80-90%	-
4	BPH	28-30°C	>80-90%	-
5	TOKA	24-40°C	30-80%	Infestation may decrease
6	FOOT ROT	30-35°C	<70%	Incidence may increase
7	B.L.B	25-34°C	<70%	Incidence may increase
8	B.L.S	16-36°C	86-100%	-
9	SHEATH BLIGHT	28-32°C	85-100%	-
10	BLAST	25-30°C	90-95%	-

## RECOMMENDATION

### HOPPER MANAGEMENT (Brown Plant Hopper/White Backed Plant Hopper)

- Drain out irrigation water in the field for 3 to 4 days.
- Install yellow sticky for monitoring of plant hoppers.
- Avoid excessive use of nitrogenous fertilizers..
- Apply granular insecticides with last irrigation in those fields where hopper infestation is observed.
- Control the pest without delay when population reaches ETL

### BROWN LEAF SPOT MANAGEMENT

- Avoid water stress before maturity.
- Control the pest with one of the following fungicides;

S#	Common Name	Brand Name	Dose / Acre
1	Propineb 70 WP	Gift, Cover, Protest	800 gm
2	Mancozeb 80 WP	Shelter, Dithane-M	800 gm
3	Propiconazole 25 EC	Tilt	80 ml

### BACTERIAL LEAF BLIGHT MANAGEMENT

- Use disease free seeds for next crop.
- Spray copper based fungicides without delay when disease incidence is observed.

S#	Common Name	Brand Name	Dose / Acre
1	Copper oxychloride	Cobox,clipper	500 gm
2	Copper hydroxide	Kocide, champion	250 gm
3	Kasugamycin + Copper oxychloride 47% WP	Profile	240-400ml

### PADDY BLAST MANAGEMENT

- For leaf blast maintain water level at 3 -4 inches to ensure that soil is covered.
- Avoid late use of nitrogenous fertilizers.
- Control the disease with one of the following fungicides

S#	Common Name	Brand Name	Dose / Acre
1	Trifloxystrobin+Tebuconazole 75%WP	Nativo	65 gm
2	Azoxystrobin 25 % SC	Primacy	100 ml
3	Difenoconazole 250 EC	Score	125 ml

## SHEATH BLIGHT MANAGEMENT

- Plant at the optimum time for a specific variety. Avoid extremely early planting.
- Control the disease with one of the following fungicides

S#	Common Name	Brand Name	Dose / Acre
1	Trifloxystrobin+Tebuconazole 75%WP	Nativo	65 gm
2	Azoxystrobin +Difenoconazole	Amistar top, Reardo	200 ml
3	Hexaconazole	Contaf Plus	400 ml

## ECONOMIC THRESHOLD LEVELS OF RICE PESTS

INSECT PESTS	ECONOMIC THRESHOLD LEVELS
Borers (White, Yellow & Pink)	0.5% attack on rice nursery while 8-10 Moth/Trap/Night & 5% dead heart on rice crop.
Toka	2-3 per net sweep.
Leaf Folder	2 rolled leaves per plant in July-August & 3 rolled leaves per plant in September-October.
Brown Plant Hopper	5 Nymphs or Adults per plant in July-August & 10 Nymphs or Adults per plant in September-October.
White Backed Plant Hopper	10 Nymphs or Adults per plant in July-August & 15 Nymphs or Adults per plant in September-October.
Hispa	1 per plant
Diseases	On appearance